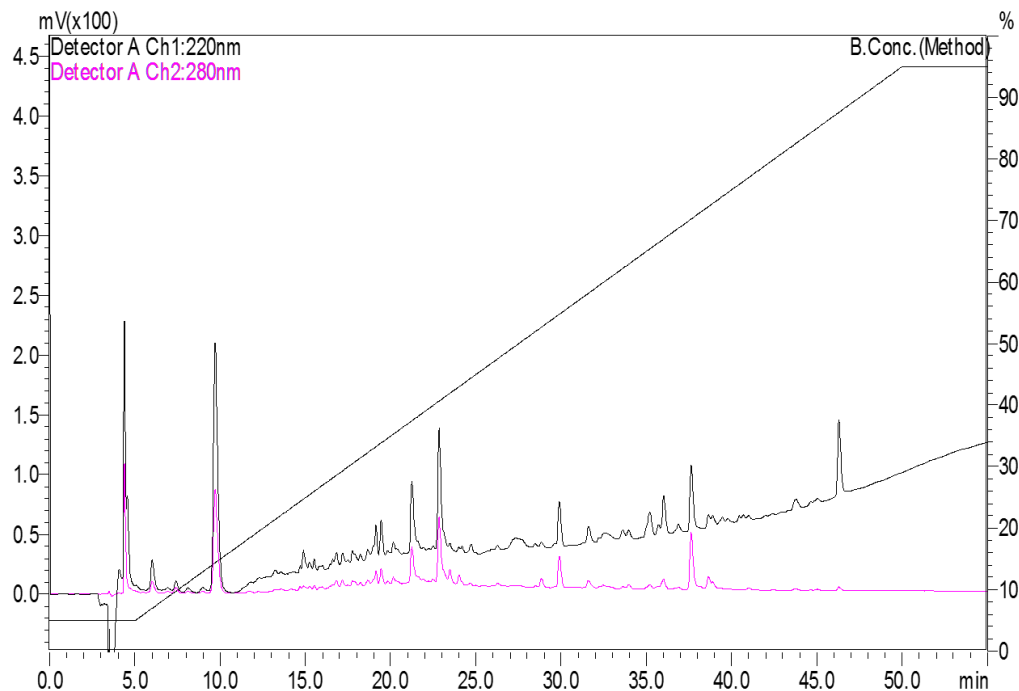


Supplementary Fig.1



Supplementary Fig. 1. Analytical profile of Yukyung Karne (YK). YK sample (300 μ g in water) was analyzed by reverse phase-HPLC (Shimadzu) on a C18 column using 2% acetonitrile gradient from 5% to 95% over a 55 minute run (flow rate of 1.0ml/min). Sample detection was done at 220 and 280nm under ambient temperature conditions.