

# Western blot membranes for Figure 2 (surface expression of KCC2)

Both membranes were cut twice horizontally (cut 1 at ~100kD; cut 2 at ~72 kD), as seen in the corresponding brightfield image.

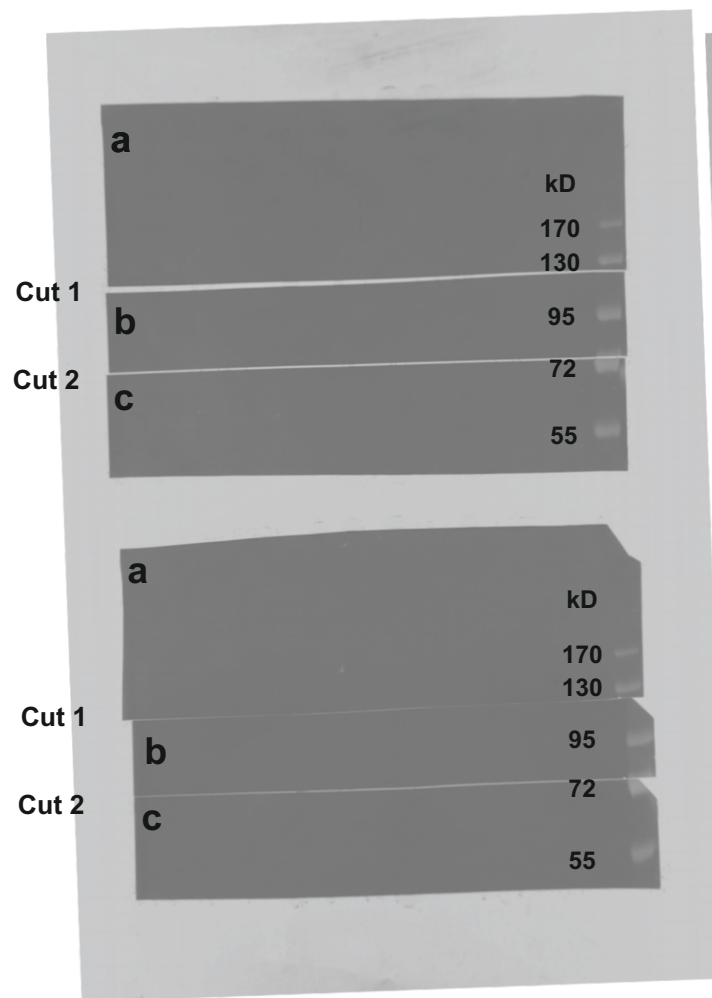
The cutting lines are indicated as dashed lines in the chemiluminescence image on the right.

Membrane strips **a** were incubated with primary antibody against KCC2, strips **b** with primary antibody against TfR and membrane strips **c** with an antibody detecting tubulin.

Thus we could detect 3 different proteins from one membrane, without stripping the blot.

The lanes which are shown in Figure 2 are marked with a red line and label.

## Bright field image



## Chemiluminescence detection image

