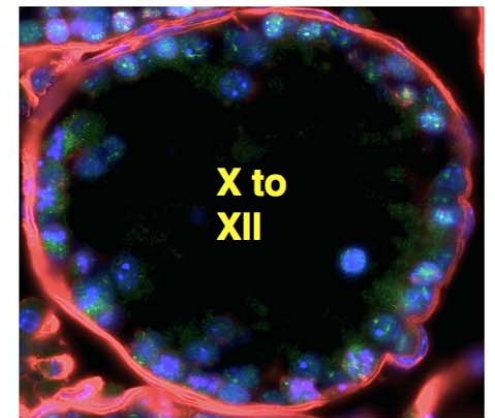
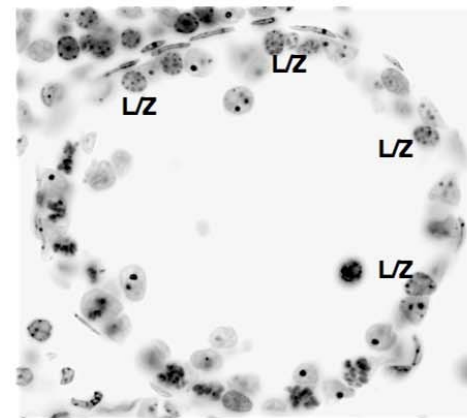
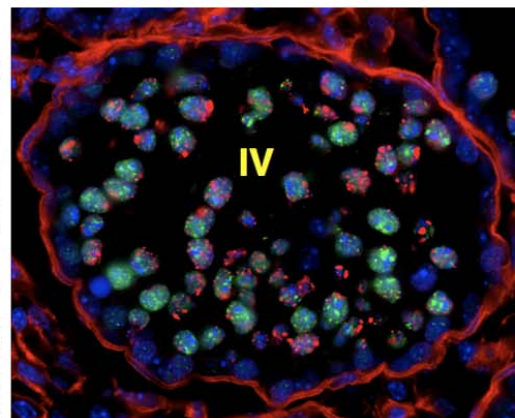
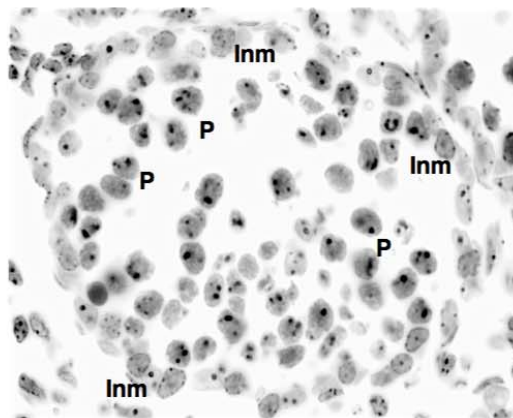
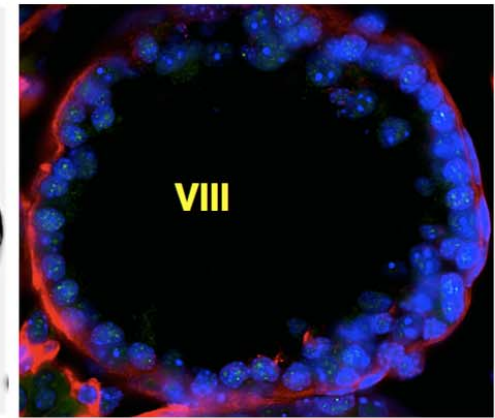
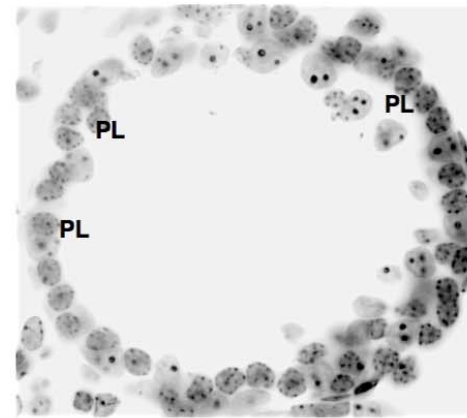
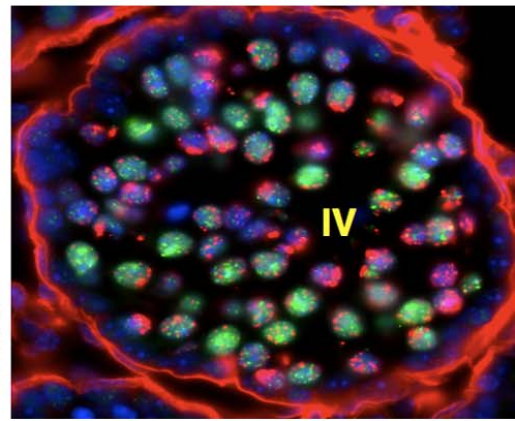
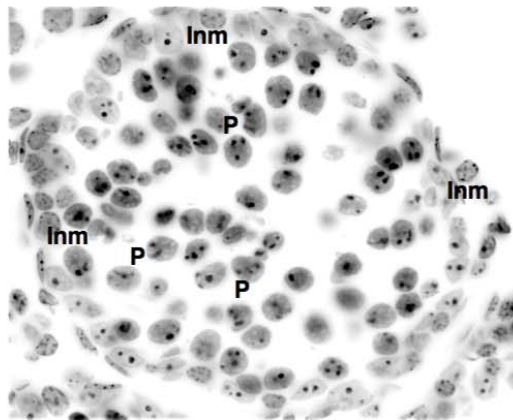
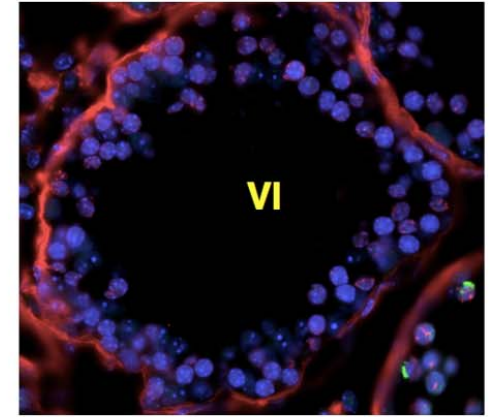
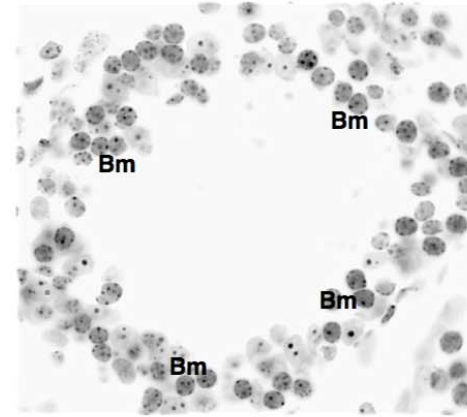
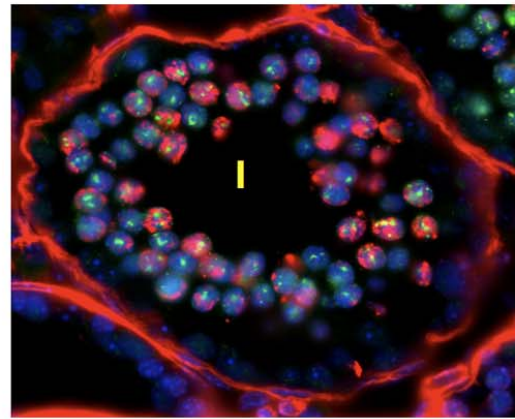
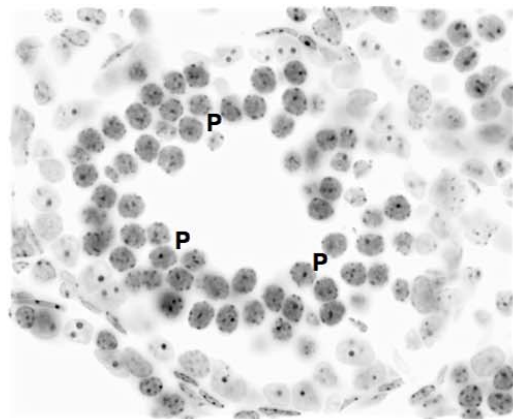


**Stag3<sup>ko/ko</sup>**



DAPI (inverted color)

yH2AX SYCP3 DAPI

DAPI (inverted color)

yH2AX SYCP3 DAPI

**Supplemental Figure S2:** *Stag3<sup>ko/ko</sup>* testis tubules. The tubules were stained with anti SYCP3, anti  $\gamma$ H2AX and DAPI. Single channel DAPI images are provided in inverted color to highlight chromatin features. The stages of the seminiferous tubules are indicated with roman numbers. Some cells are annotated as examples. Inm = intermediate spermatogonia; Bm = B spermatogonia; PL = preleptonema; L/Z = leptonema/zygonema; P = pachynema. No cells beyond early pachynema are observed at any stage. Size bars indicate 10  $\mu$ m.