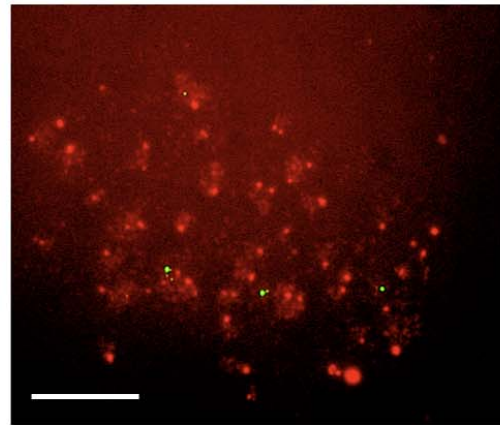
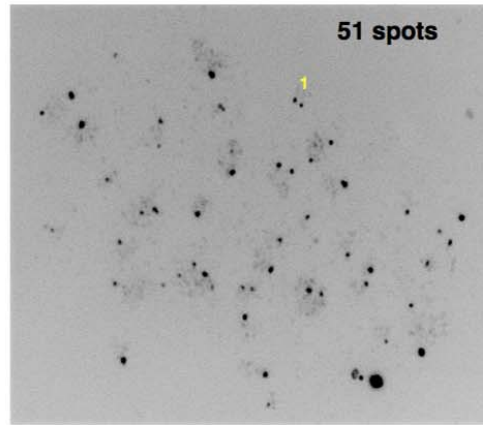


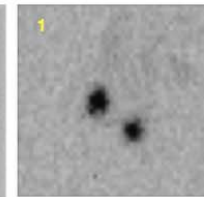
A



ACA SYCP3

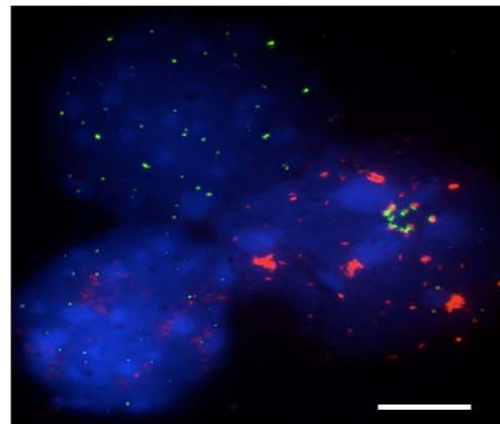


ACA (color inverted)

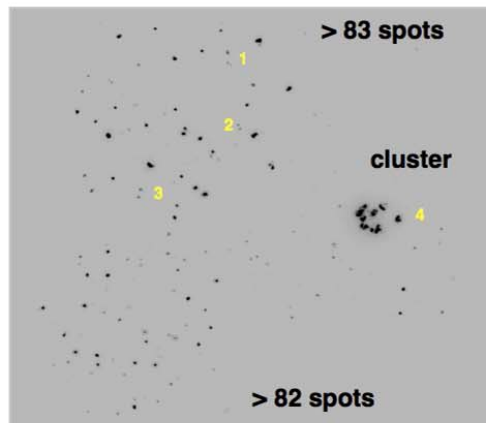


Stag3^{ko/ko}

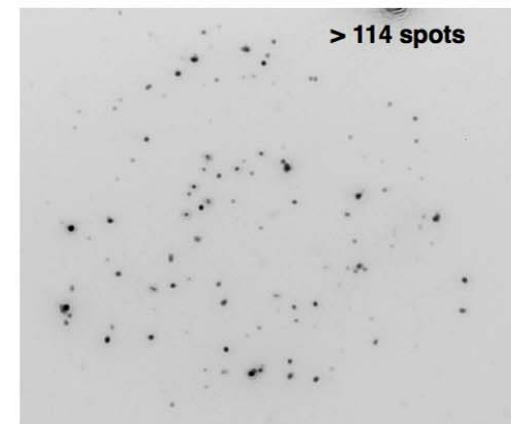
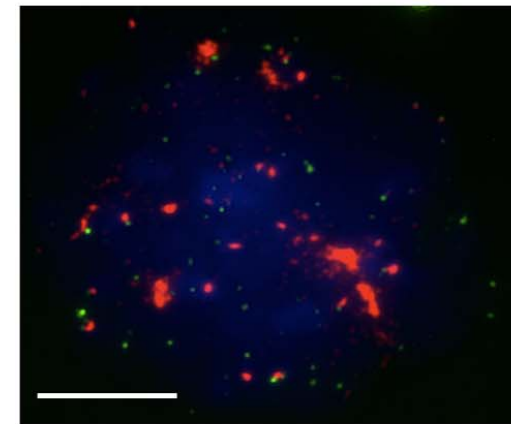
B



SYCP3 RAP1 DAPI



RAP1 (color inverted)



Supplemental Figure S5: Examples of inverted color images of centromere (A) or telomere (B) staining of spermatocytes with antibody ACA and anti RAP1 respectively. The minimum numbers of spots counted and a telomere cluster are indicated. Pairs of centromeres or telomeres are magnified in excerpts to indicate loss of centromeric or telomeric cohesion. Size bars indicate 10 μm .