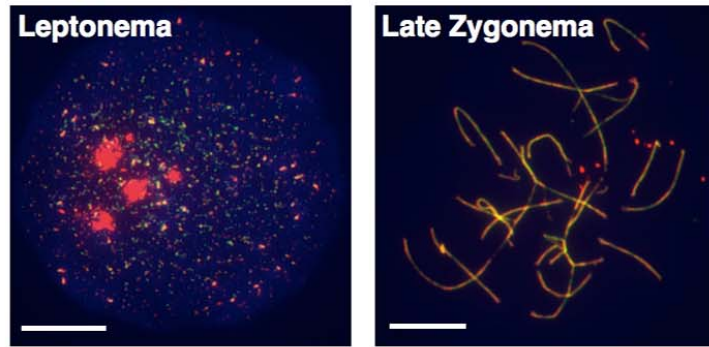


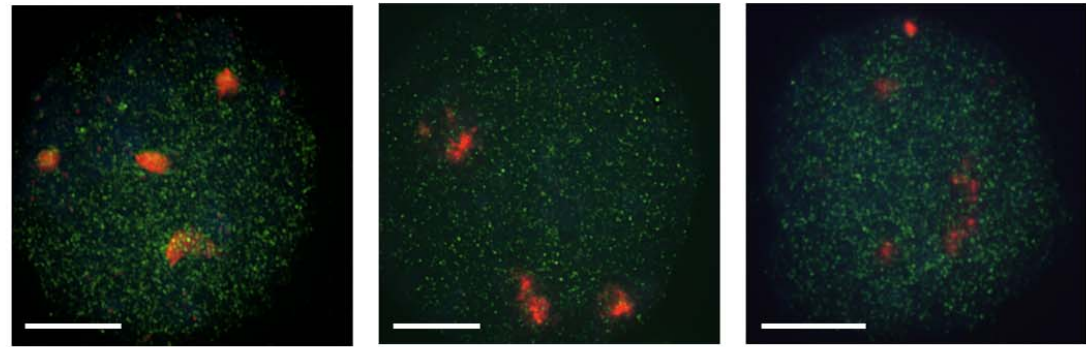
A

Stag3^{+/+}



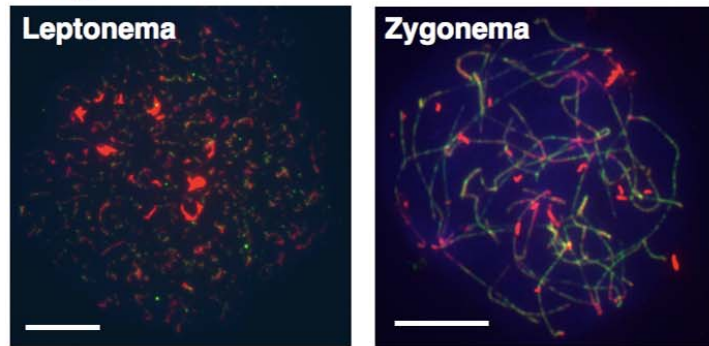
SYCP3 SMC3 DAPI

Stag3^{ko/ko}



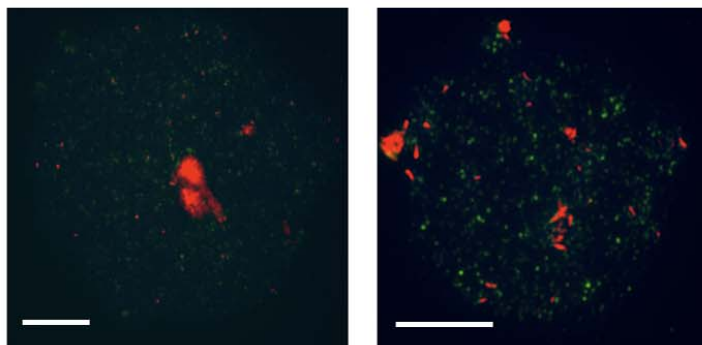
B

Stag3^{+/+}



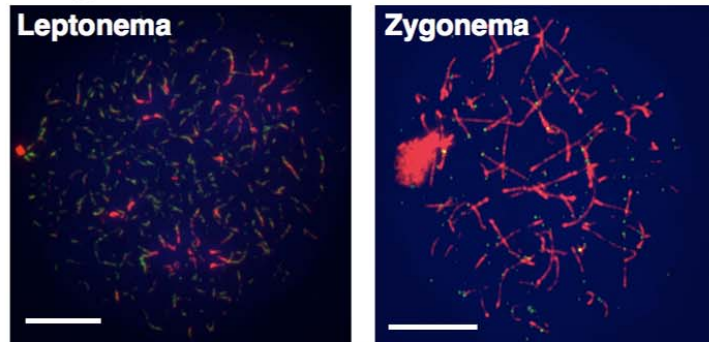
SYCP3 RAD21L DAPI

Stag3^{ko/ko}



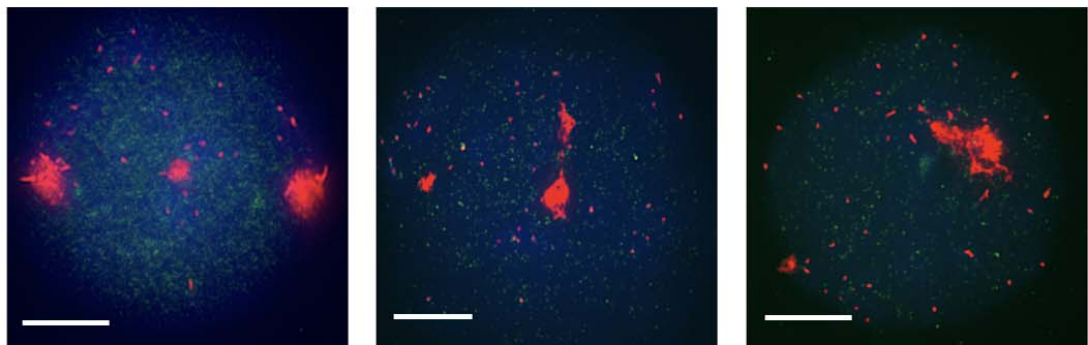
C

Stag3^{+/+}



SYCP3 RAD21 DAPI

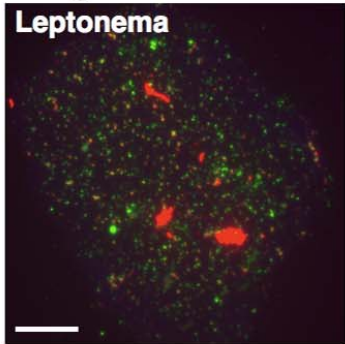
Stag3^{ko/ko}



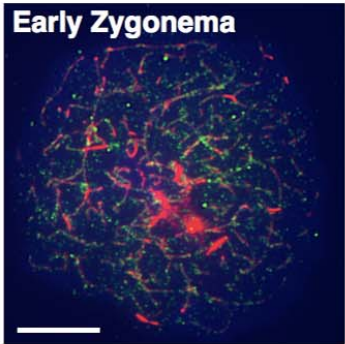
D

Stag3^{+/+}

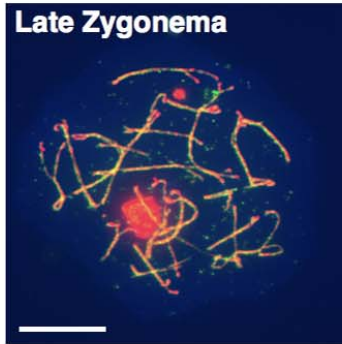
Leptonema



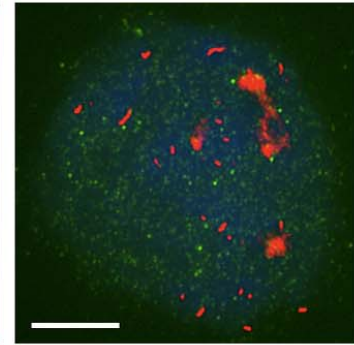
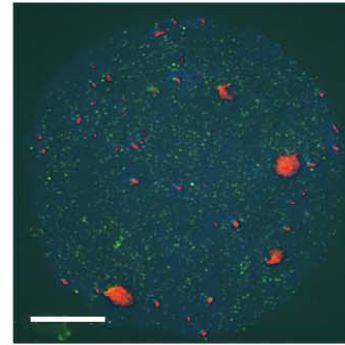
Early Zygonema



Late Zygonema



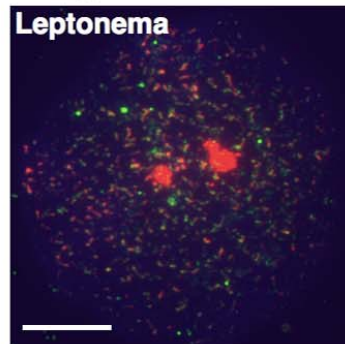
Stag3^{ko/ko}



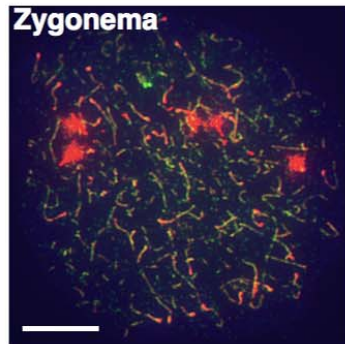
SYCP3 SMC1β DAPI

E **Stag3^{+/+}**

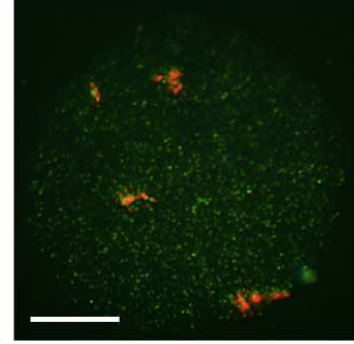
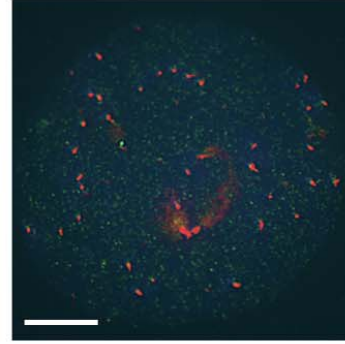
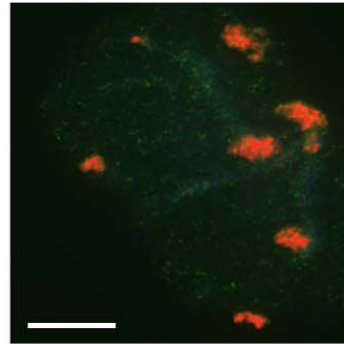
Leptonema



Zygonema



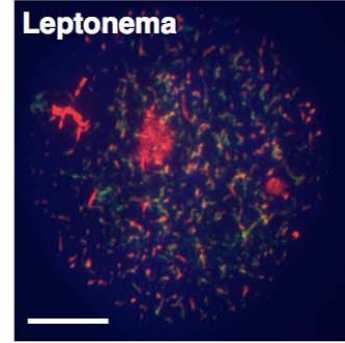
Stag3^{ko/ko}



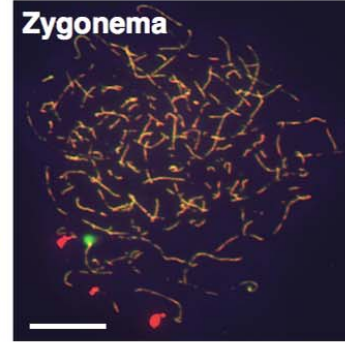
SYCP3 SMC1α DAPI

F **Stag3^{+/+}**

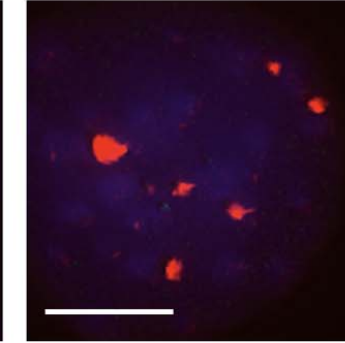
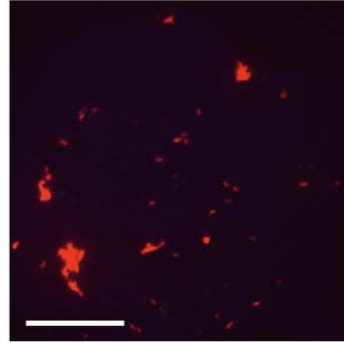
Leptonema



Zygonema



Stag3^{ko/ko}



SYCP3 STAG3 DAPI

Supplemental Figure S8: Immunofluorescence staining of cohesin proteins in oocyte chromosome spreads of wt and *Stag3^{ko/ko}* mice, probed with anti SYCP3 and (A) anti-SMC3; (B) anti-RAD21L; (C) anti-RAD21; (D) anti-SMC1 β ; (E) anti SMC1 α , and (F) anti-STAG3. Nucleic acids were stained by DAPI. Size bars indicate 10 μ m.