

Figure S2. PAX6 regulates neural TFs.

Genome browser snapshots of ChIP-Seq data for PAX6 near several genes implicated in neuroectoderm development. Also shown is the ChIP-Seq signal for H3K27Ac and H3K27Me3 in NEC.

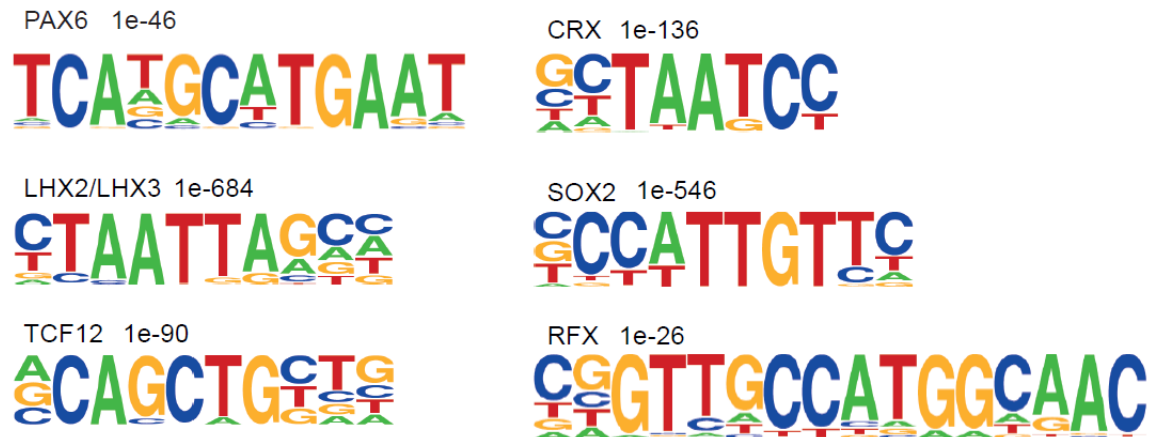


Figure E3. Motif analysis of PAX6 binding sites

Motifs enriched within PAX6 binding sites that match to known motifs for PAX6 and other TFs and their corresponding P-values.