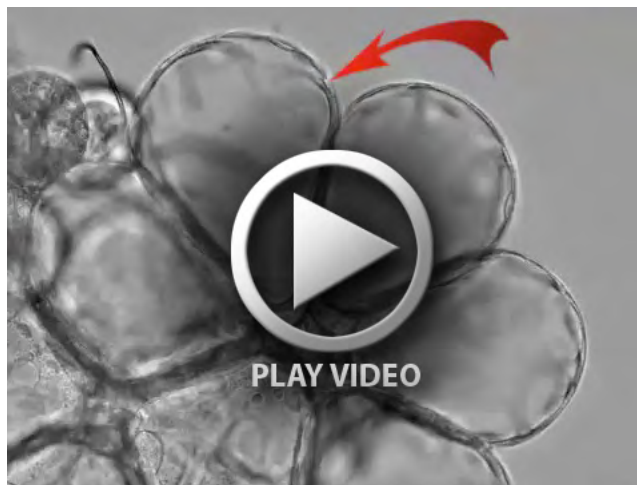




Movie 1. Dopamine triggers acini size increases in the salivary gland of the blacklegged tick, *Ixodes scapularis*. The movie is in 30x speed.



Movie 2. Pumping action of an acinus (indicated by arrow) in the salivary gland of the blacklegged tick, *Ixodes scapularis*. The movie is in real time with 1 frame captured per second.



Movie 3. Gating action of an acinus in the salivary gland of the blacklegged tick, *Ixodes scapularis*. The periodic movement of acinar valve flaps is indicated by arrow. The movie is in 30x speed.