



Complete plastome sequences from *Glycine syndetika*, and six additional perennial wild relatives of soybean.

Sue Sherman-Broyles*¹, Aureliano Bombarely*, Jane Grimwood§, Jeremy Schmutz§, and Jeff Doyle*

*Cornell University, Department of Plant Biology, Ithaca, NY 14853, § HudsonAlpha Institute for Biotechnology, Huntsville, AL 35806

Corresponding Author: Sue Sherman-Broyles 412 Mann Library Building, Department of Plant Biology, Cornell University, Ithaca, NY 14853 607-227-0532, sls98@cornell.edu

GenBank PopSet: 514252878 KC893632-KC893640

DOI: 10.1534/g3.114.012690

Table S1 BAC library Information. All libraries were constructed from *Hind*III digests of genomic DNA. Libraries available at Arizona Genomics Institute. Genbank sequence identifiers from direct submission

<i>Glycine</i> species	CSIRO Accession Numbers	AGI Library Name	coverage	Average insert size Kb	Chloroplast Clones Used	GenBank Accession Number
<i>G. syndetika</i>	G1300	GS_Ba	12x	168	SOG52-H04	KC893638.1
<i>G. dolichocarpa</i>	G1134	GD_Tba	11x	151	SOE258-B02	KC893636.1
<i>G. canescens</i>	G1232	GC_bC	14x	146	SOJ90-A19	KC893635.1
<i>G. tomentella D3</i>	G1403	GT_Dba	12x	147	SOF103-N20	KC893633.1
<i>G. falcata</i>	G1718	GF_BA	12x	146	SOI54-F07	KC893637.1
<i>G. stenophita</i>	G1974	GS_ABa	12x	149	SOK108-O10	KC893634.1
<i>G. cyrtoloba</i>	G1267	GC_Bb	12x	147	SOH198-B08	KC893632.1

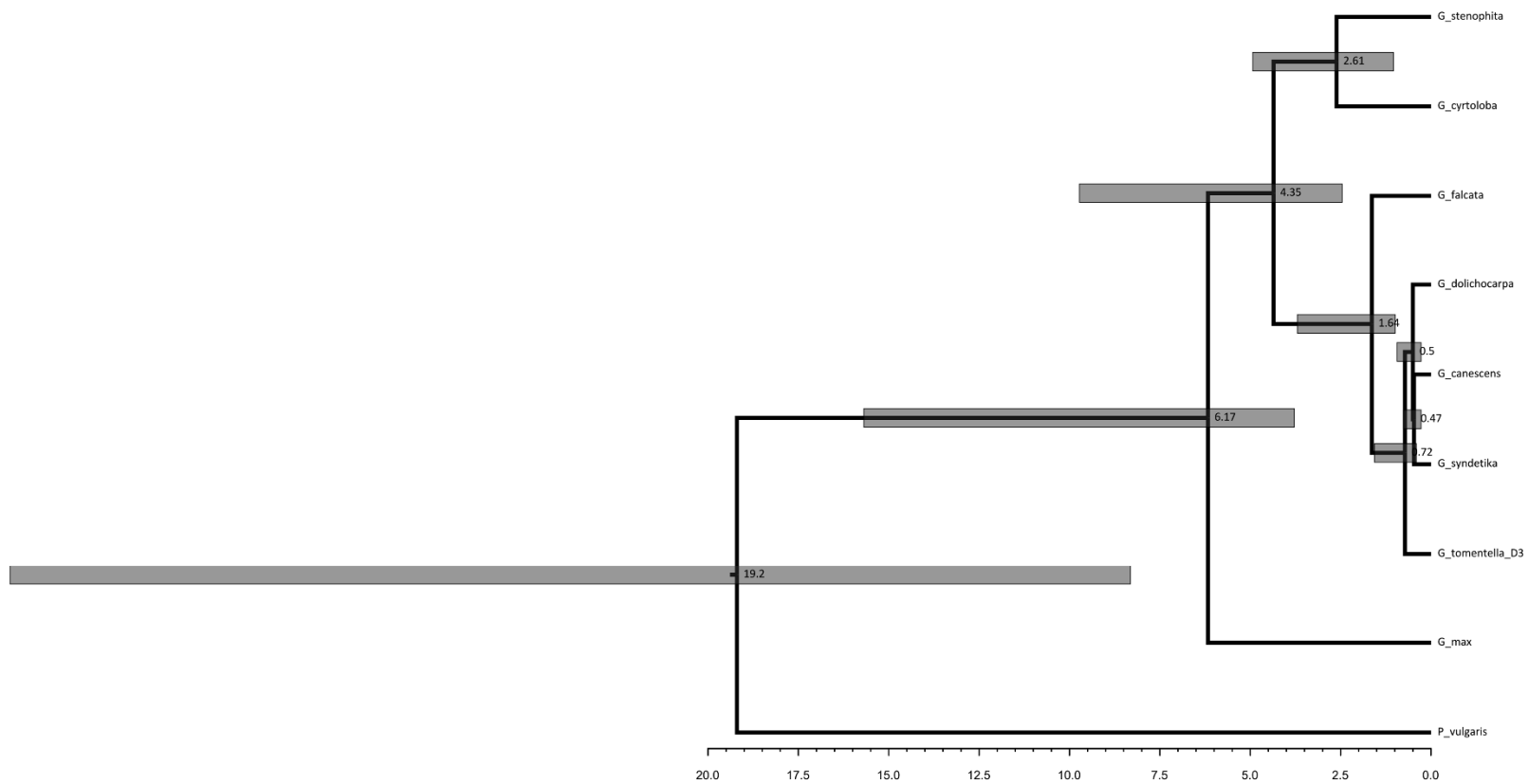


Figure S1 *Glycine* plastome tree with *Phaseolus vulgaris* as the outgroup.