

Supplemental Information

Title: An experimental task to examine the mirror system in rats

Authors: Yuji Takano^{1,2}, Masatoshi Ukezono^{1,2,3}

Affiliations:

¹NTT Communication Science Laboratories, Nippon Telegraph and Telephone Corporation.

²CREST, Japan Science and Technology Agency.

³Department of Psychology, Meiji Gakuin University.

Correspondence should be addressed to Y.T.
(takano.yuji@lab.ntt.co.jp)

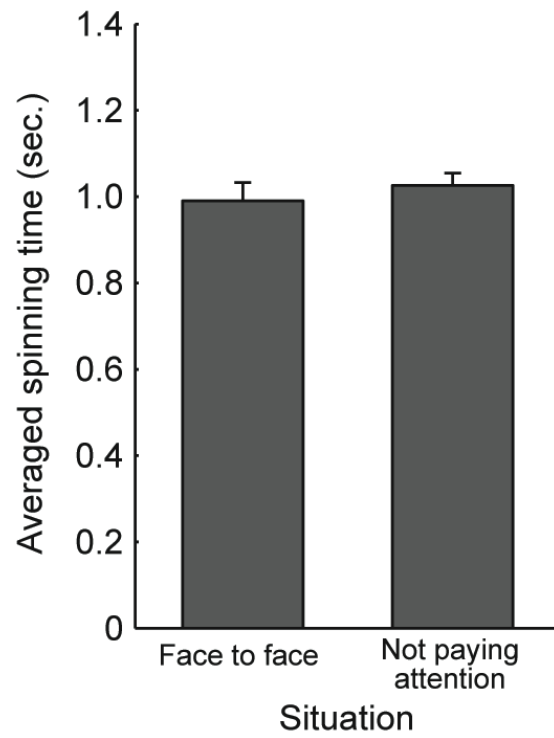


Figure S1 Comparison of spinning times between “face to face” and “not paying attention” situations. The difference was not significant ($t(9) = 0.85$, n.s.).

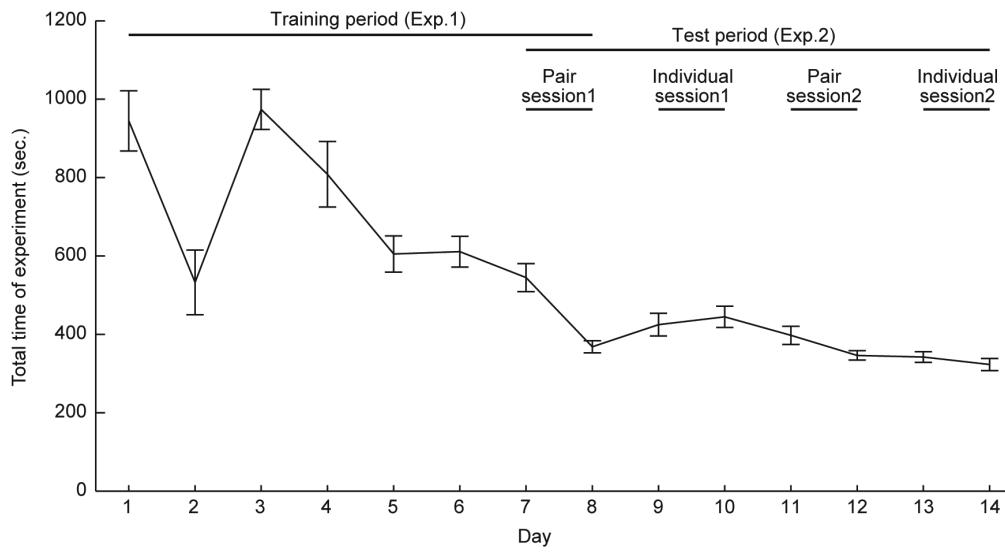
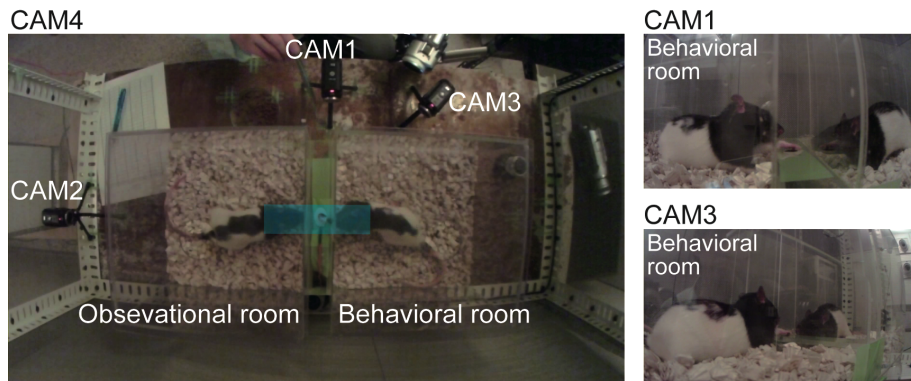


Figure S2 Average daily session time. Error bars represent standard error.

Example of “face to face”



Example of “ambiguous”

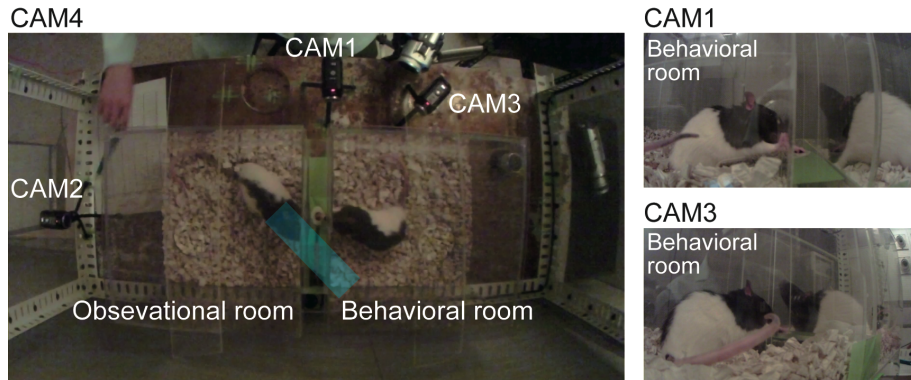


Figure S3 Criterion for “face to face” situation. In the overview image (CAM4), we judged whether a “ruler” covering the width of the observing rat’s head (blue rectangle) also covered the reaching rat’s head. In the other three images, we judged whether the two rats were actually face-to-face.