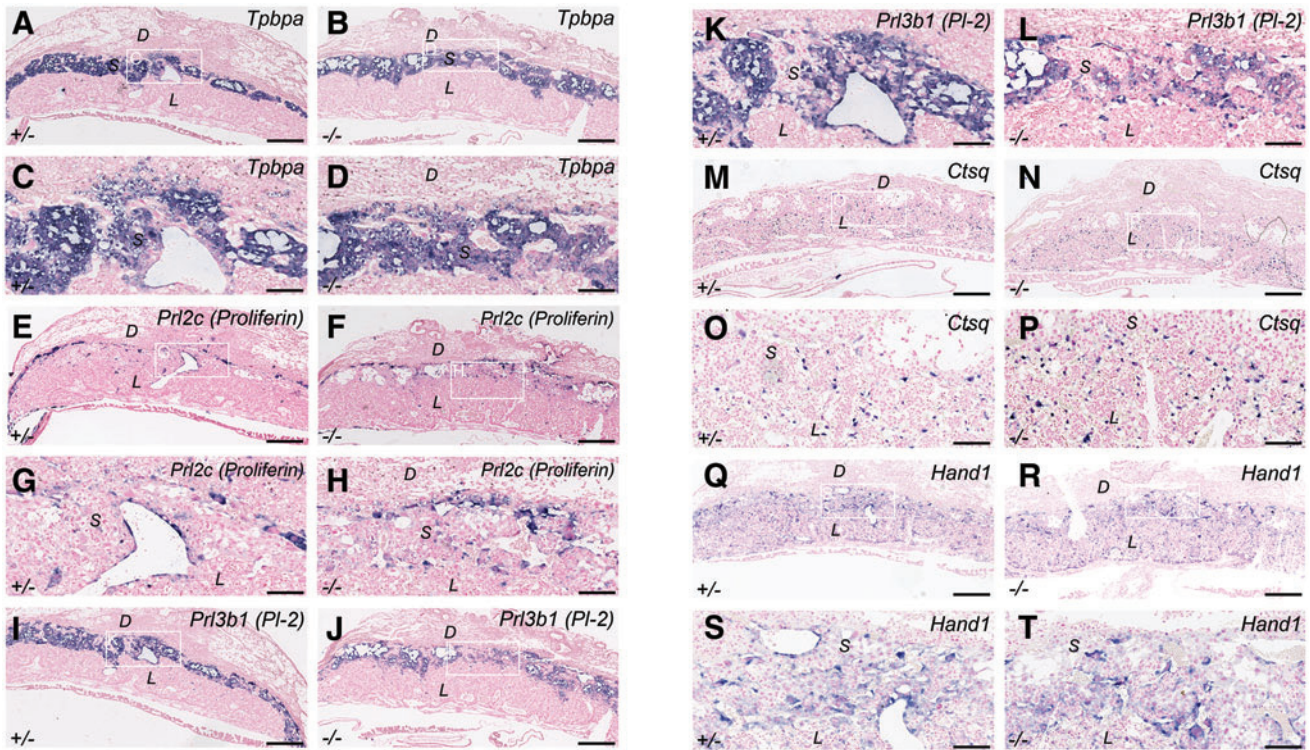


Supplementary Data



SUPPLEMENTARY FIG. S1. In situ hybridization at E12.5. Shown are serial sections of one *Cx31*^{+/-} placenta (*left panel*) compared to one *Cx31*^{-/-} placenta (*right panel*) hybridized with trophoblast-specific markers. The two littermates were viable at the time of dissection. No obvious differences in spatial distribution of *Tpbpa* (**A–D**), *Prl2c/Plf* (**E–H**), *Prl3b1/Pl-2* (**I–L**), *Ctsq* (**M–P**), and *Hand1* (**Q–T**) could be detected. Thus, surviving placentas appear to have unchanged placental organization compared to controls. Scale bar represent 400 μ m in **A, B, E, F, I, J, M, N, Q, R**, and 100 μ m in **C, D, G, H, K, L, O, P, S, T**. *D*, decidua; *L*, labyrinth; *S*, spongiotrophoblast.