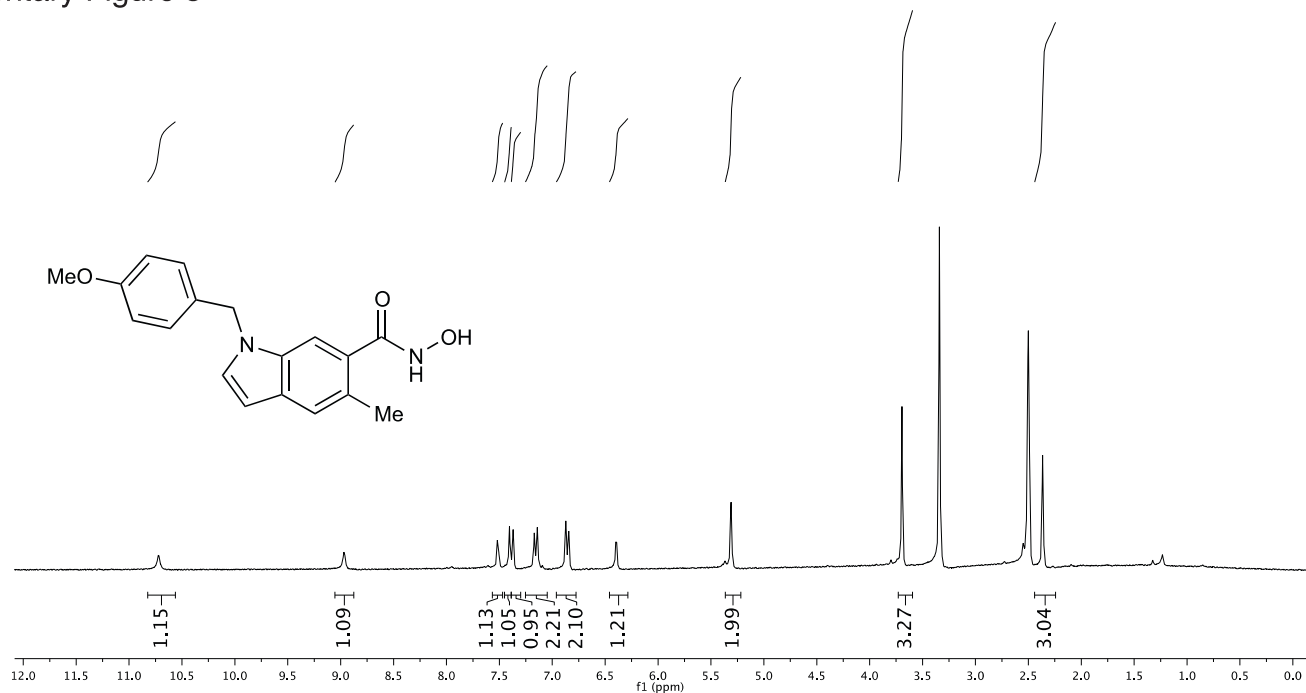
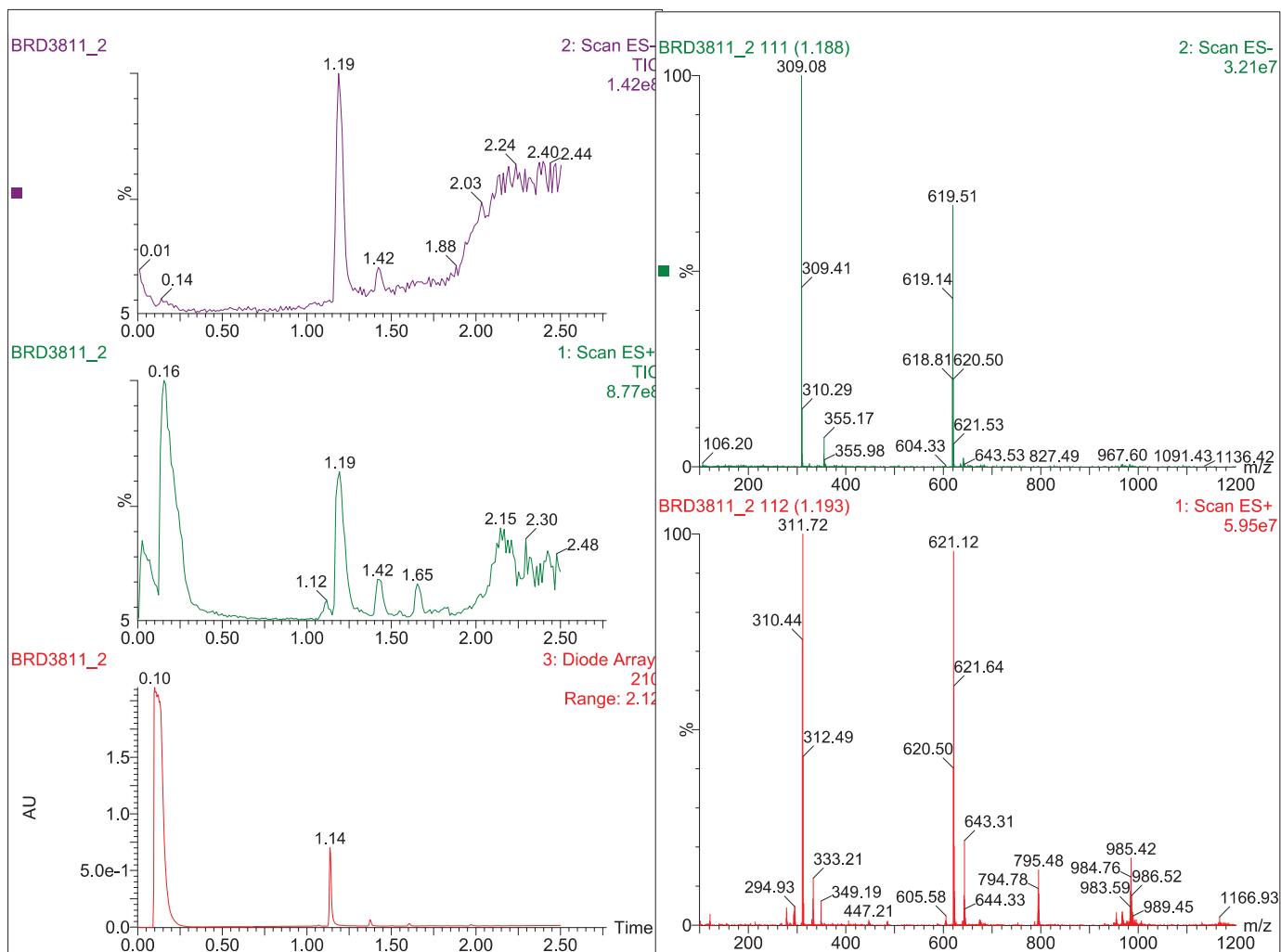


Supplementary Figure 5

a



b



Supplementary Figure 5. Characterization data confirming the identity and purity of BRD3811. (a) ^1H NMR of BRD3811 in DMSO- d_6 . (b) LCMS trace depicting the elution of BRD3811 at $R_t = 1.14$ min. DMSO elutes at $R_t = 0.10$.