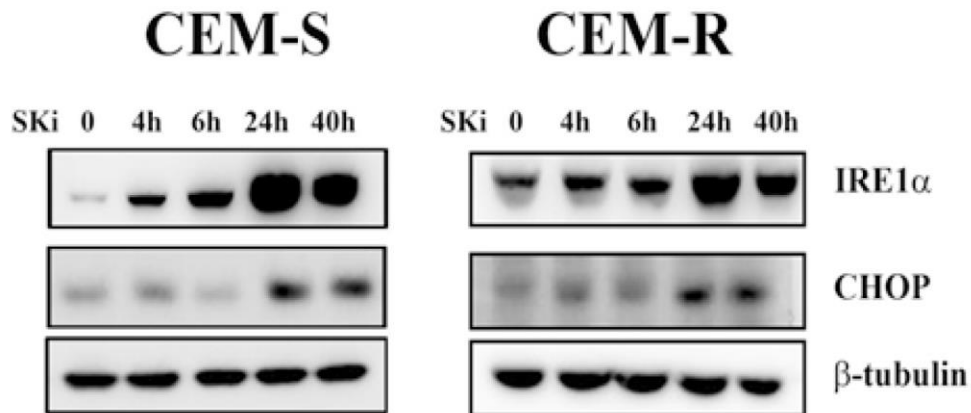
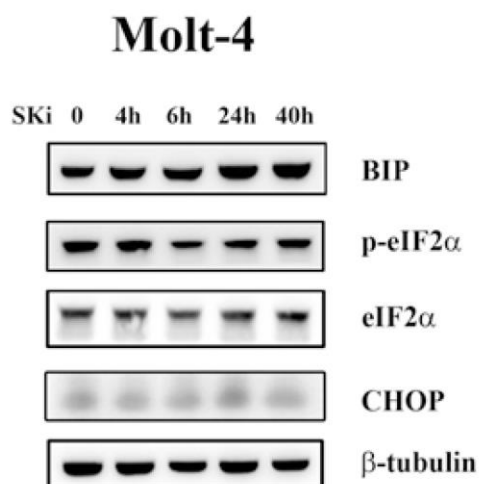


Assessment of the effect of sphingosine kinase inhibitors on apoptosis, unfolded protein response and autophagy of T-cell acute lymphoblastic leukemia cells; indications for novel therapeutics

Supplementary Material



Supplementary Figure 1: Western blot analysis for IRE1 α and CHOP in CEM-S and CEM-R cells treated with SKi for short (4 and 6 h) and long times (24 and 40 h). Fifty μ g of protein was loaded for each lane. β -tubulin was used as a loading control.



Supplementary Figure 2: Western blot analysis for BIP, p-eIF2 α , total eIF2 α , and CHOP in Molt-4 cells treated with SKi for 4, 6, 24, and 40 h. Fifty μ g of protein was loaded for each lane. β -tubulin was used as a loading control.