

Proteomic profiling reveals insights into Triticeae stigma development and function

Nazila Nazemof, Philippe Couroux, Christof Rampitsch, Tim Xing, and Laurian S Robert

Supplementary Data

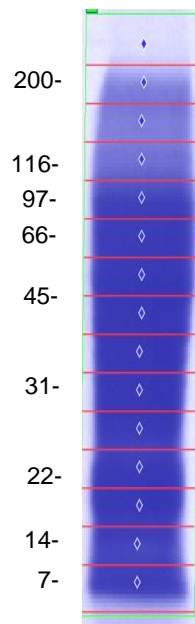


Figure S1. 1D SDS-PAGE of triticale mature stigma proteins indicating bands excised for 1D LC-MS/MS analysis.

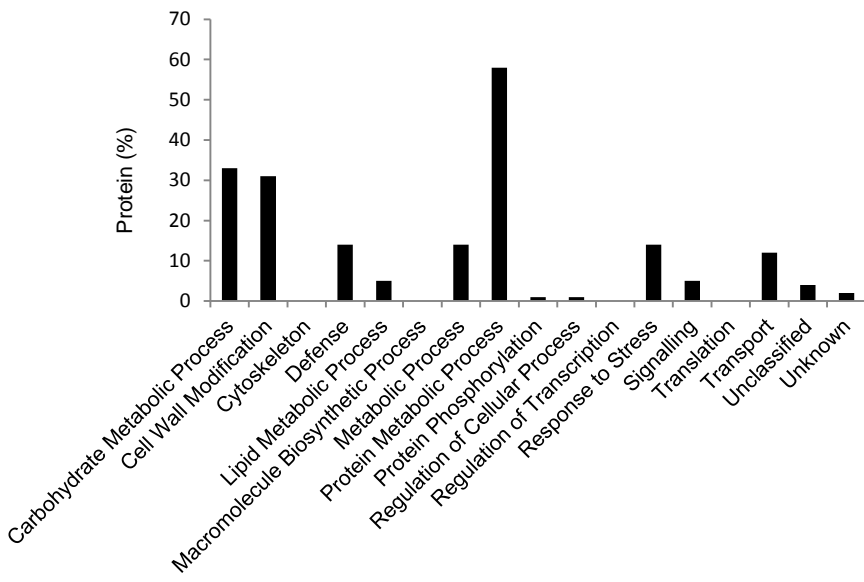


Figure S2. Functional distribution of triticale mature stigma proteins with a predicted signal peptide.