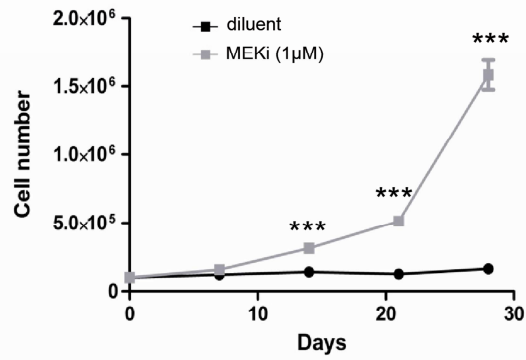


A. OP9



B. Human MSC

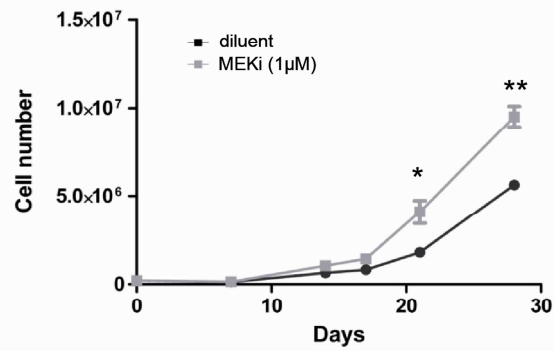


Figure S2: Response of T-ALL cell to MEK inhibition during co-cultures with different support cells. 2×10^5 T-ALL cells were incubated with OP9 mouse stromal cells (A: M18) or with human mesenchymal stem cells (MSC) (B: M78) in the presence of PD184352 for 28 days. Cells were counted by FACS analysis. *, $p < 0.05$; **, $p < 0.005$, ***, $p < 0.0005$ (Mann and Whitney non-parametric test was used for statistics)