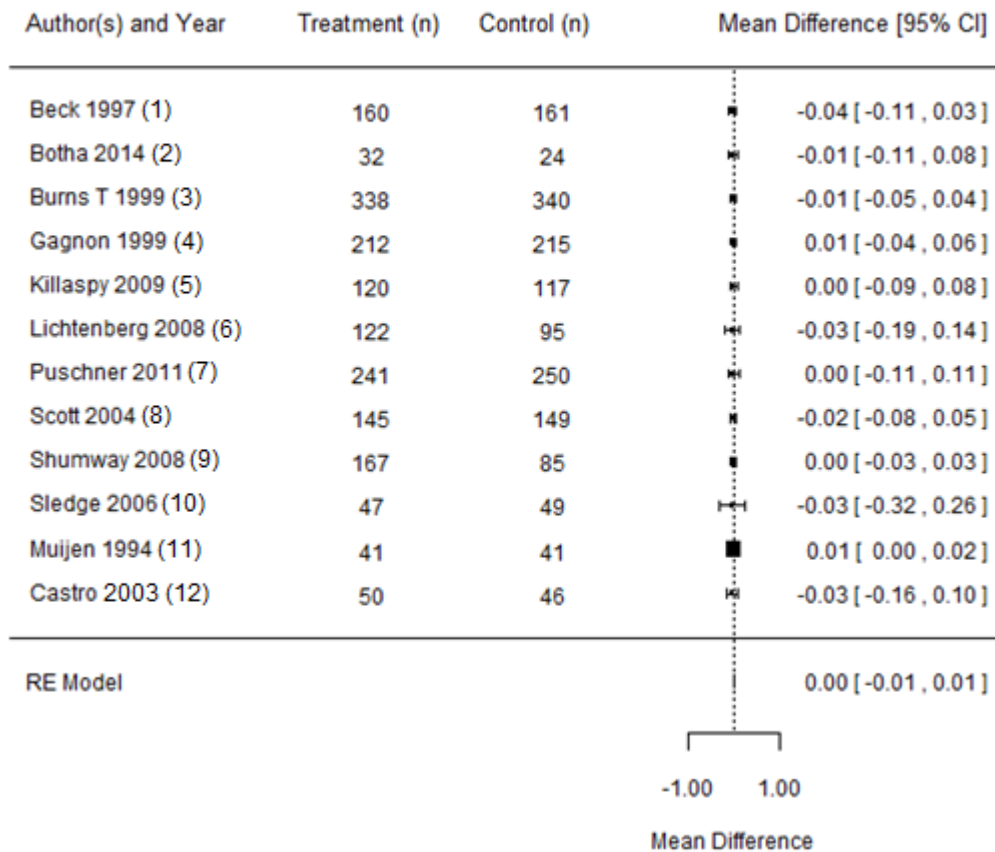


Appendix 8 (as supplied by the authors): Effect of quality improvement strategies relative to control in terms of mean number of hospital admissions per patient per month



Abbreviations: CI, Confidence interval; n, number; RE, Random effects.

$I^2 = 0\%$

References

1. Beck A, Scott J, Williams P, et al. A randomized trial of group outpatient visits for chronically ill older HMO members: the Cooperative Health Care Clinic. *J Am Geriatr Soc* 1997;45:543-9.
2. Botha UA, Koen L, Galal U, et al. The rise of assertive community interventions in South Africa: a randomized control trial assessing the impact of a modified assertive intervention on readmission rates; a three year follow-up. *BMC Psychiatry* 2014;14:56.
3. Burns T, Creed F, Fahy T, et al. Intensive versus standard case management for severe psychotic illness: a randomised trial. UK 700 Group. *Lancet* 1999;353:2185-9.
4. Gagnon AJ, Schein C, McVey L, et al. Randomized controlled trial of nurse case management of frail older people. *J Am Geriatr Soc* 1999;47:1118-24.
5. Killaspy H, Kingett S, Bebbington P, et al. Randomised evaluation of assertive community treatment: 3-year outcomes. *Br J Psychiatry* 2009;195:81-2.
6. Lichtenberg P, Levinson D, Sharshevsky Y, et al. Clinical case management of revolving door patients — a semi-randomized study. *Acta Psychiatr Scand* 2008;117:449-54.
7. Puschner B, Steffen S, Volker KA, et al. Needs-oriented discharge planning for high utilisers of psychiatric services: multicentre randomised controlled trial. *Epidemiol Psychiatr Sci* 2011;20:181-92.
8. Scott JC, Conner DA, Venohr I, et al. Effectiveness of a group outpatient visit model for chronically ill older health maintenance organization members: a 2-year randomized trial of the cooperative health care clinic. *J Am Geriatr Soc* 2004;52:1463-70.
9. Shumway M, Boccellari A, O'Brien K, et al. Cost-effectiveness of clinical case management for ED frequent users: results of a randomized trial. *Am J Emerg Med* 2008;26:155-64.
10. Sledge WH, Brown KE, Levine JM, et al. A randomized trial of primary intensive care to reduce hospital admissions in patients with high utilization of inpatient services. *Dis Manage* 2006;9:328-38.
11. Muijen M, Cooney M, Strathdee G, et al. Community psychiatric nurse teams: intensive support versus generic care. *Br J Psychiatry* 1994;165:211-7.
12. Castro M, Zimmermann NA, Crocker S, et al. Asthma intervention program prevents readmissions in high healthcare users. *Am J Respir Crit Care Med* 2003;168:1095-9.