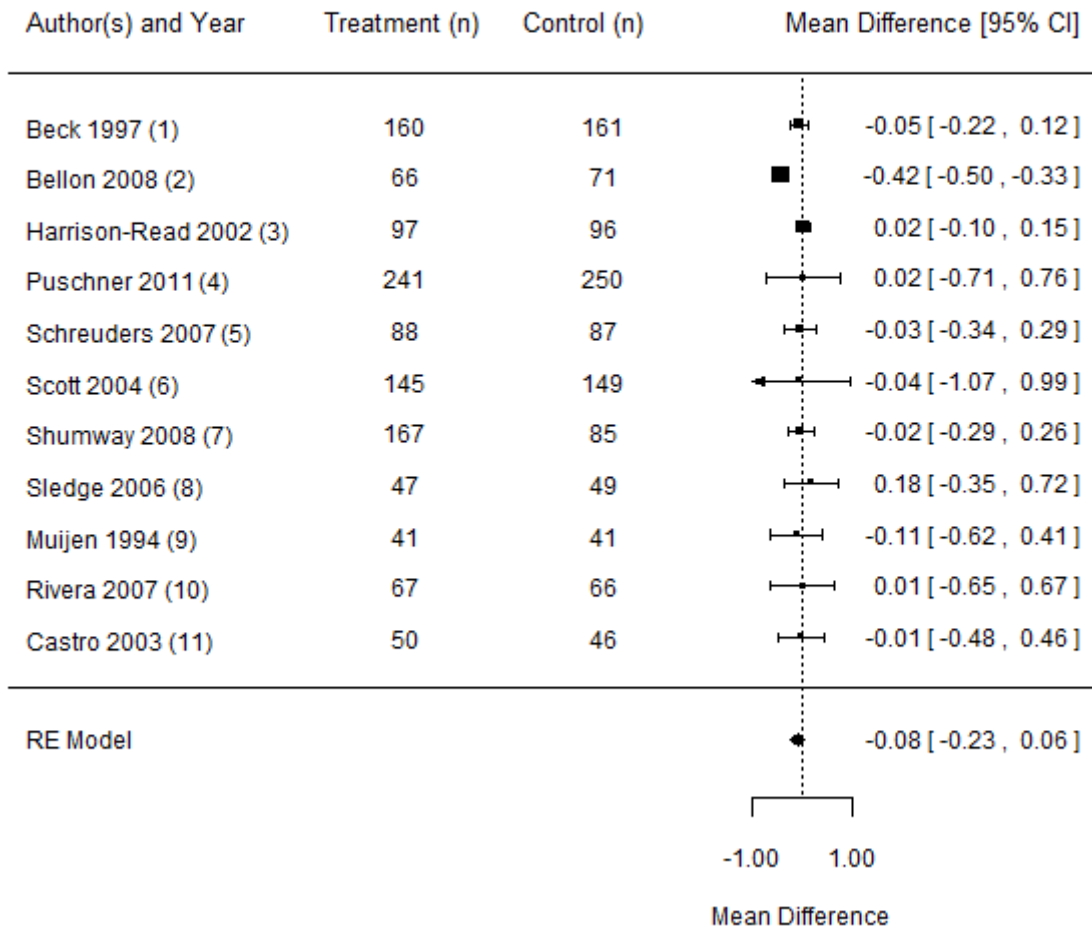


**Appendix 9 (as supplied by the authors):** Effect of quality improvement strategies relative to control in terms of mean number of clinic visits per patient per month



**Abbreviations:** CI, Confidence interval; n, number, RE, Random effects.  
 $I^2 = 65\%$

## References

1. Beck A, Scott J, Williams P, et al. A randomized trial of group outpatient visits for chronically ill older HMO members: the Cooperative Health Care Clinic. *J Am Geriatr Soc* 1997;45:543-9.
2. Bellon JA, Rodriguez-Bayon A, de Dios Luna J, Torres-Gonzalez F. Successful GP intervention with frequent attenders in primary care: randomised controlled trial. *Br J Gen Pract* 2008;58(550):324-30.
3. Harrison-Read P, Lucas B, Tyrer P, et al. Heavy users of acute psychiatric beds: randomized controlled trial of enhanced community management in an outer London borough. *Psychol Med* 2002;32:403-16.
4. Puschner B, Steffen S, Volker KA, et al. Needs-oriented discharge planning for high utilisers of psychiatric services: multicentre randomised controlled trial. *Epidemiol Psychiatr Sci* 2011;20:181-92.
5. Schreuders B, van Marwijk H, Smit J, et al. Primary care patients with mental health problems: outcome of a randomised clinical trial. *Br J Gen Pract* 2007;57:886-91.
6. Scott JC, Conner DA, Venohr I, et al. Effectiveness of a group outpatient visit model for chronically ill older health maintenance organization members: a 2-year randomized trial of the cooperative health care clinic. *J Am Geriatr Soc* 2004;52:1463-70.
7. Shumway M, Boccellari A, O'Brien K, et al. Cost-effectiveness of clinical case management for ED frequent users: results of a randomized trial. *Am J Emerg Med* 2008;26:155-64.
8. Sledge WH, Brown KE, Levine JM, et al. A randomized trial of primary intensive care to reduce hospital admissions in patients with high utilization of inpatient services. *Dis Manage* 2006;9:328-38.
9. Muijen M, Cooney M, Strathdee G, et al. Community psychiatric nurse teams: intensive support versus generic care. *Br J Psychiatry* 1994;165:211-7.
10. Rivera JJ, Sullivan AM, Valenti SS. Adding consumer-providers to intensive case management: Does it improve outcome? *Psychiatr Serv* 2007;58:802-9.
11. Castro M, Zimmermann NA, Crocker S, et al. Asthma intervention program prevents readmissions in high healthcare users. *Am J Respir Crit Care Med* 2003;168:1095-9.