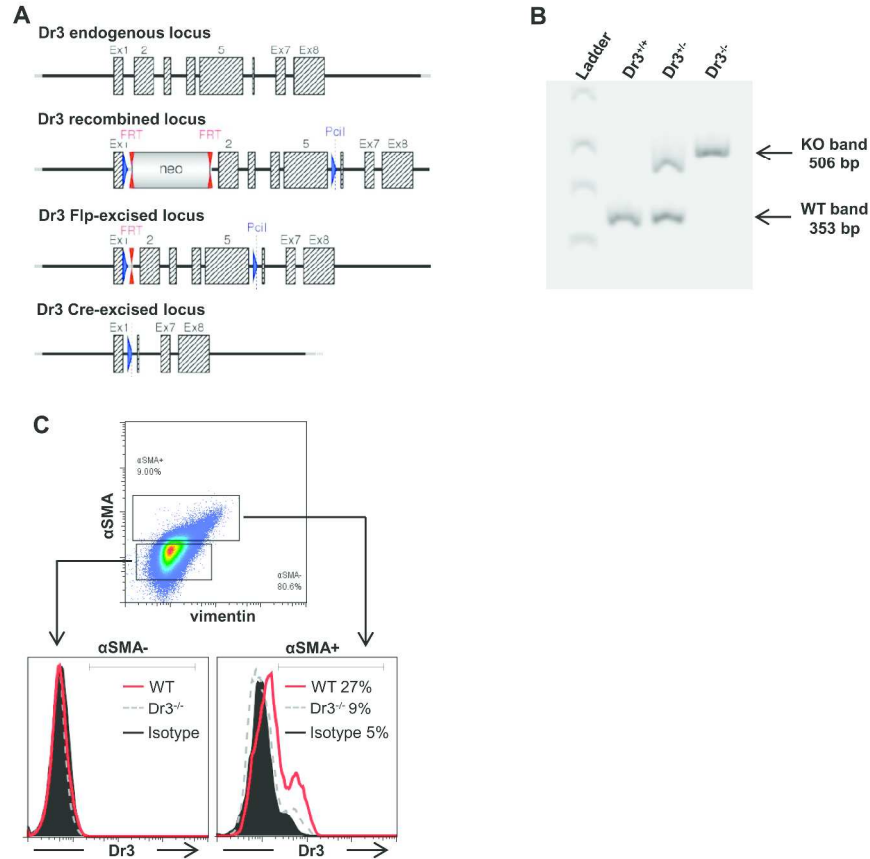


## Supplementary Figure S1



**Supplementary Figure S1** Generation of Dr3 deficient mice. **(A)** Schematic representation of mouse *Dr3* endogenous locus and strategy for gene targeting. **(B)** Representative polymerase chain reaction for *Dr3* genotype is shown with targeted (*Dr3* KO) band running at 506 bp and endogenous *Dr3* locus running at 353 bp. **(C)** Primary intestinal fibroblasts were stained with Dr3, αSMA and vimentin and analyzed by flow cytometry. Fibroblasts expressing αSMA is gated as shown and Dr3 expression is found on αSMA<sup>+</sup> fibroblasts. Shown are representative flow cytometric plots of 3 independent experiments with similar results.

160x212mm (800 x 800 DPI)