

Supplementary Fig. 3

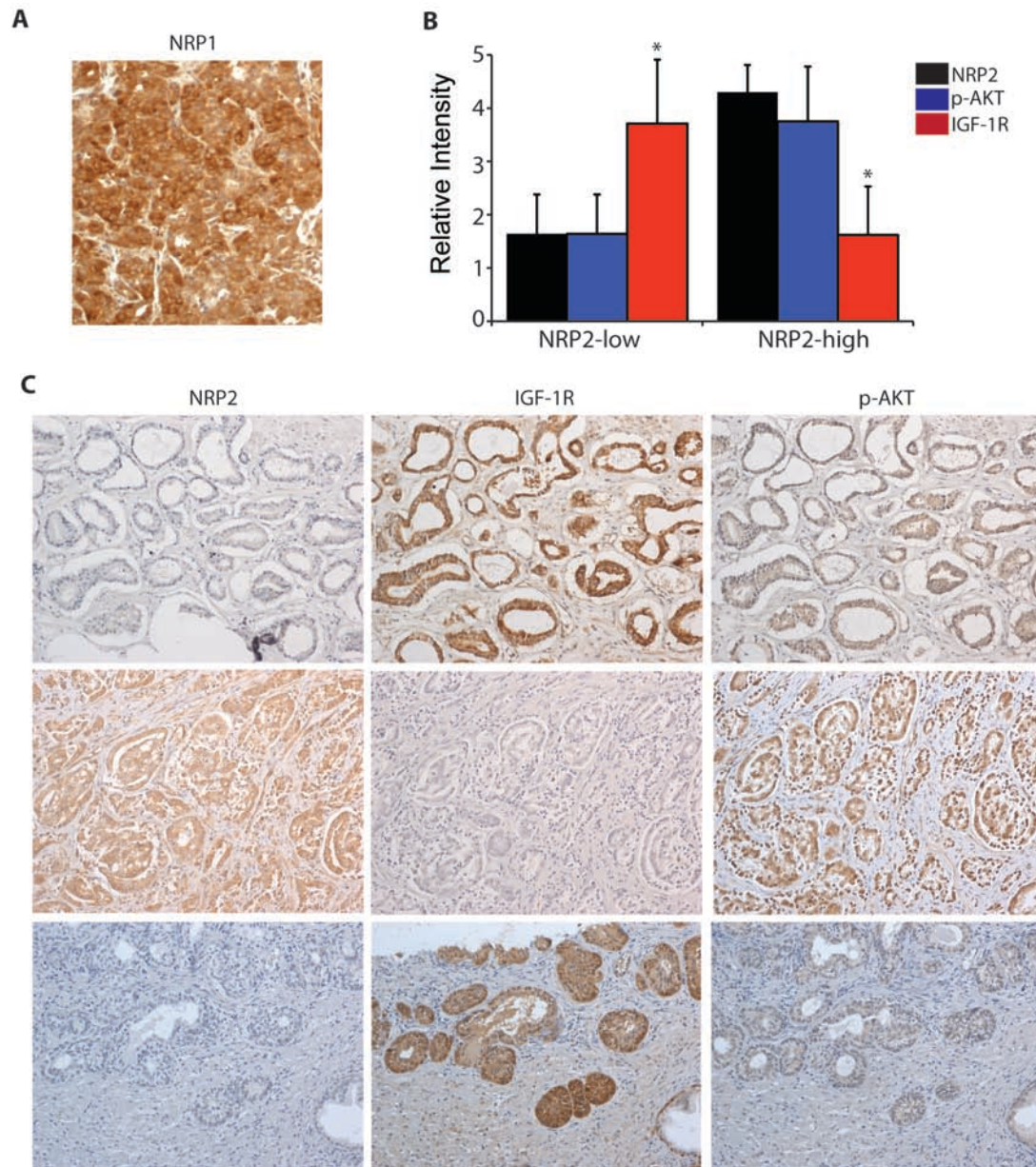


Figure S3. (A) A paraffin-embedded and formalin-fixed PyV-MT mammary tumor specimen was immunostained with the same NRP1 antibody used in Fig. 2B. (B-C) Consecutive sections of human prostate cancer specimens (n=22) were immunostained for NRP2, IGF-1R and p-AKT. Immunostaining was graded on a scale of 1-5 by two independent investigators (IL and HLG). Results show that IGF-1R is inversely correlated with NRP2 ($p < 0.01$) and p-AKT ($p < 0.01$), and that NRP2 is positively correlated with p-AKT ($p < 0.01$).