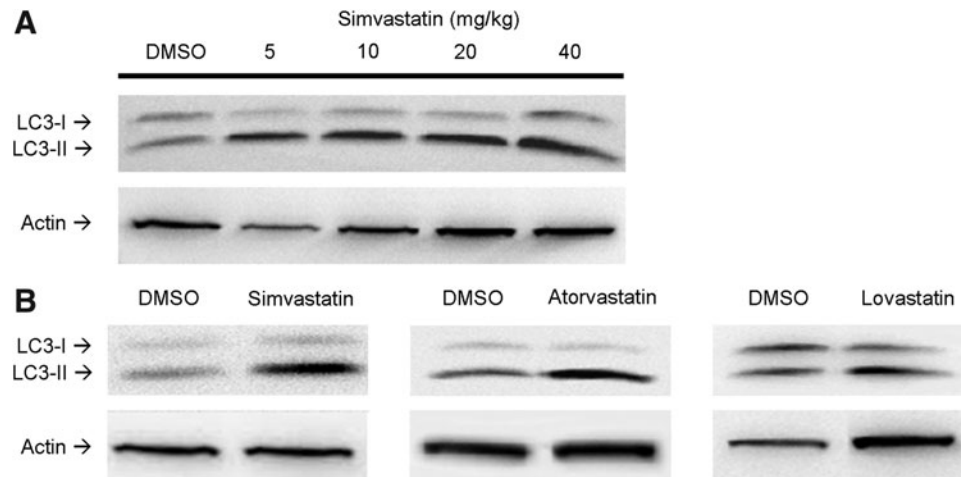


Supplementary Data



SUPPLEMENTARY FIG. S1. Statins upregulate cardiac autophagy. (A) Simvastatin was administered to mice *via* i.p. using a dose range of 5–40 mg/kg. (B) Mice received vehicle (DMSO), or simvastatin, atorvastatin, or lovastatin as indicated (20 mg/kg i.p.). Four hours after treatments, mice were sacrificed and heart lysates were immunoblotted for LC3. DMSO, dimethyl sulfoxide; i.p., intraperitoneal.