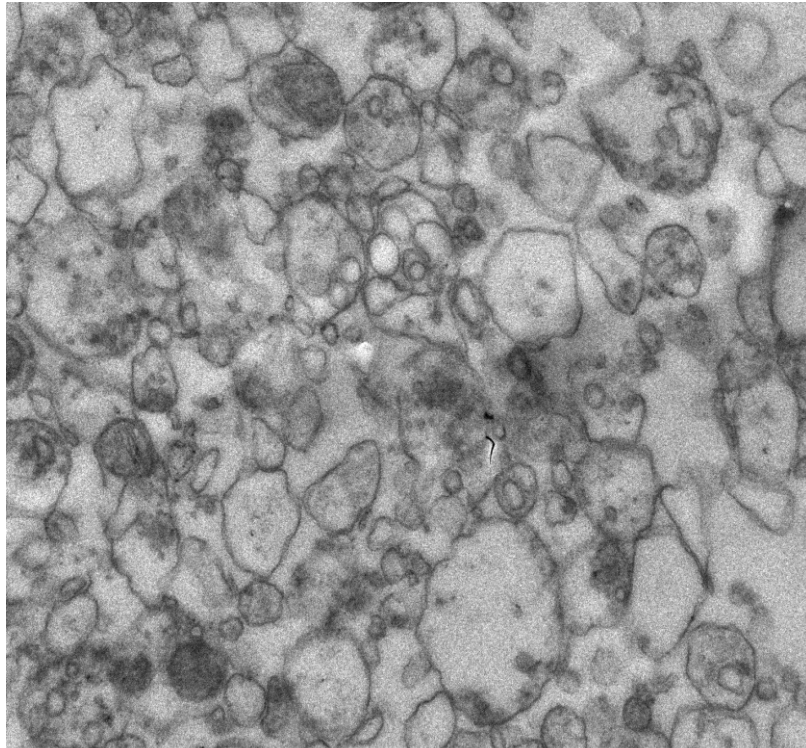
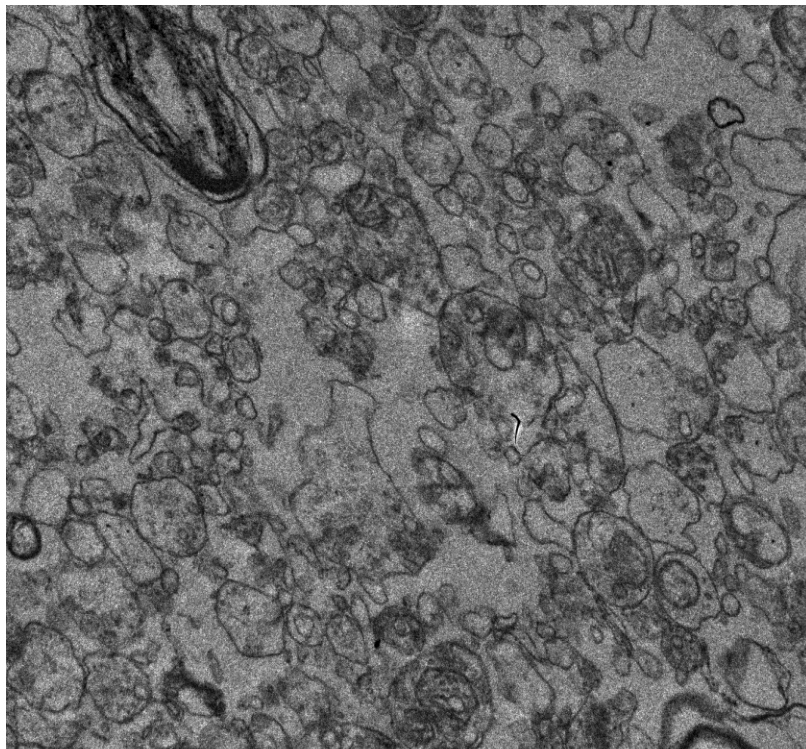


Supplementary Figure 1. Transmission electron micrographs of human synaptoneuroosomes isolated from non-demented controls, with arrowheads marking the presence of (1) myelin fragment; (2) intact synapse; (3) mitochondrion.

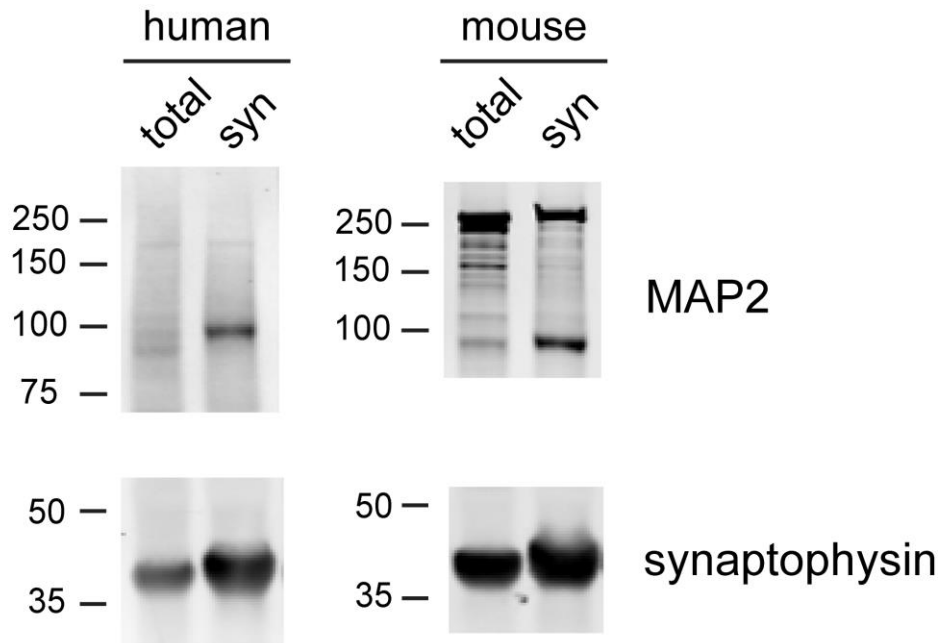


500 nm



500 nm

Supplementary Figure 2. Transmission electron micrographs of synaptoneuroosomes isolated from Alzheimer's disease subjects. No visible fibrils were observed.



Supplementary Figure 3. Immunoblotting with mouse anti-MAP2 and mouse anti-synaptophysin against total and synaptoneurosomes (syn) extracts from human controls and mouse brain tissues. Low molecular weight MAP2 (<100 kDa) is highly enriched inside both human and mouse neuronal synapses.