

Figure S1. Depletion of FUNDC1 does not block ULK1 puncta formation under starvation-induced autophagy

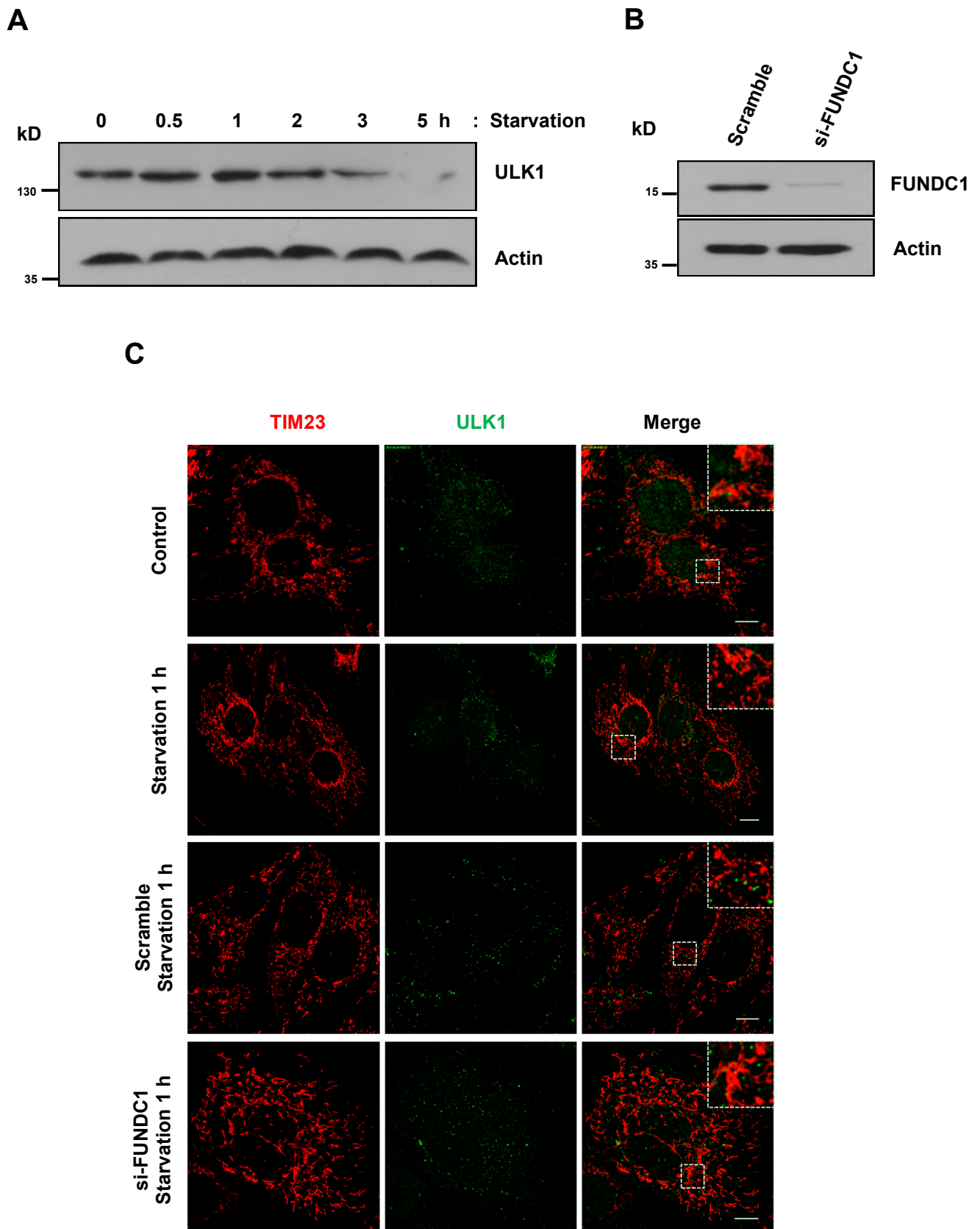


Figure S1. Depletion of FUNDC1 does not block ULK1 puncta formation under starvation-induced autophagy

- (A) MEFs were cultured under starvation (EBSS) for the indicated times and immunoblotted with anti-ULK1 and anti-Actin antibodies. All results are from 3–4 independent experiments.
- (B) MEFs were transfected with scramble or *FUNDC1* siRNA for 24 h. Immunoblotting with FUNDC1 antibody shows the siRNA knockdown efficiency.
- (C) MEFs and FUNDC1 knocked down MEFs were cultured under normal or EBSS for 1 h, then fixed by 4% paraformaldehyde. Cells were stained with anti-TIM23 (mouse) and anti-ULK1 (rabbit) primary antibodies, then Alexa fluor-488 labeled Donkey anti-Rabbit IgG and Alexa fluor-555 labeled Donkey anti-Mouse IgG secondary antibodies before analysis by immunofluorescence microscopy. Bar, 10 μ m.