

Figure S11. Mitophagy induced by hypoxia can be reversed by BAF but not MG132, while mitophagy induced by FCCP can be reversed by either BAF or MG132 but to a less extent by MG132

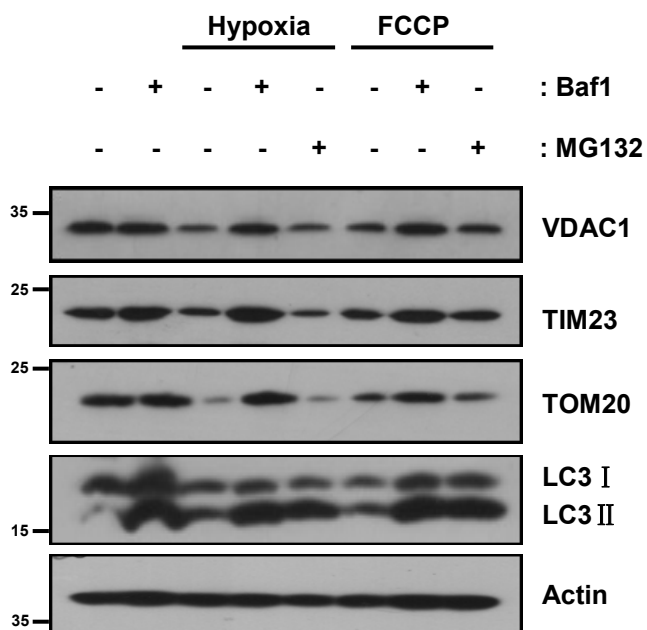


Figure S11. Mitophagy induced by hypoxia can be reversed by BAF but not MG132, while mitophagy induced by FCCP can be reversed by either BAF or MG132 but to less extent by MG132

MEFs were cultured under hypoxic (1% O₂) conditions for 24 h or FCCP (20 μM) for 24 h in absence or presence of 50 nM bafilomycin A1 (BAF1) or 20 μM MG132. Cell lysates was immunoblotted with indicated antibodies. All results are from 3 independent experiments.