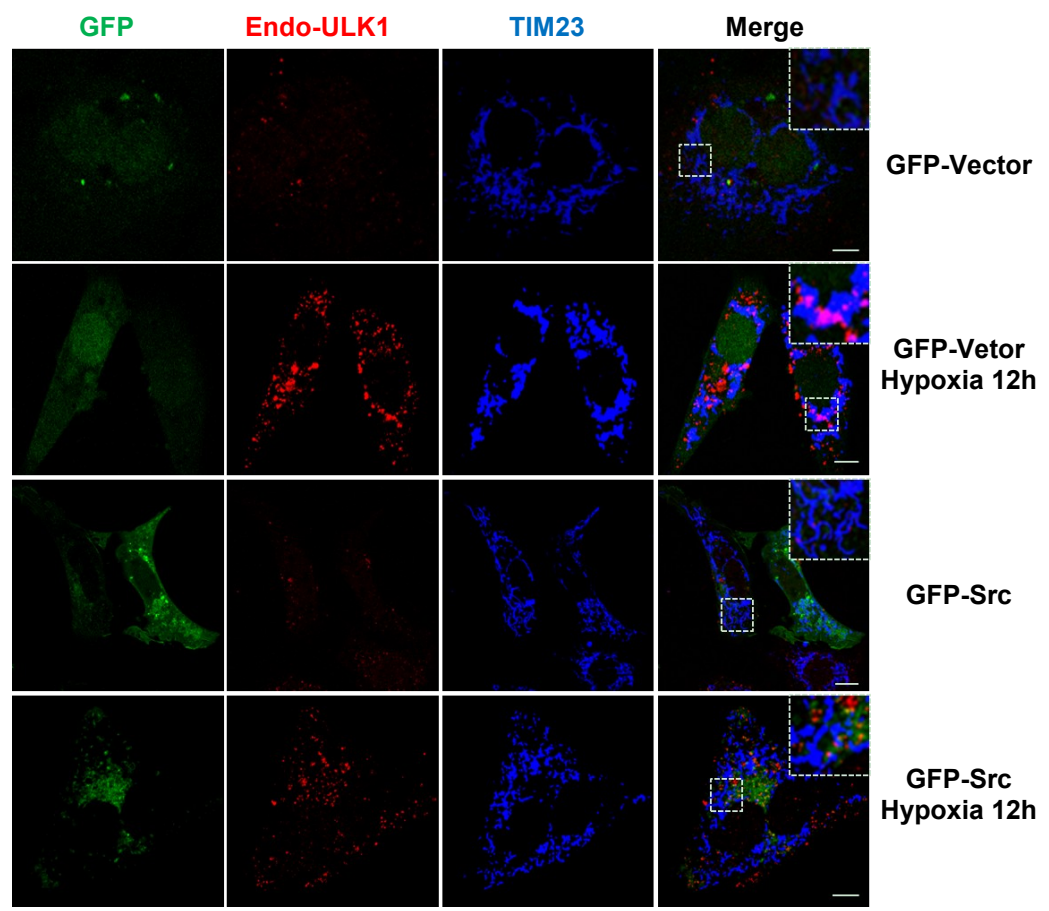


Figure S12. Src kinase inhibits the association of ULK1 puncta with mitochondria and suppresses FUNDC1 (S17) phosphorylation by ULK1 in response to hypoxia

A



B

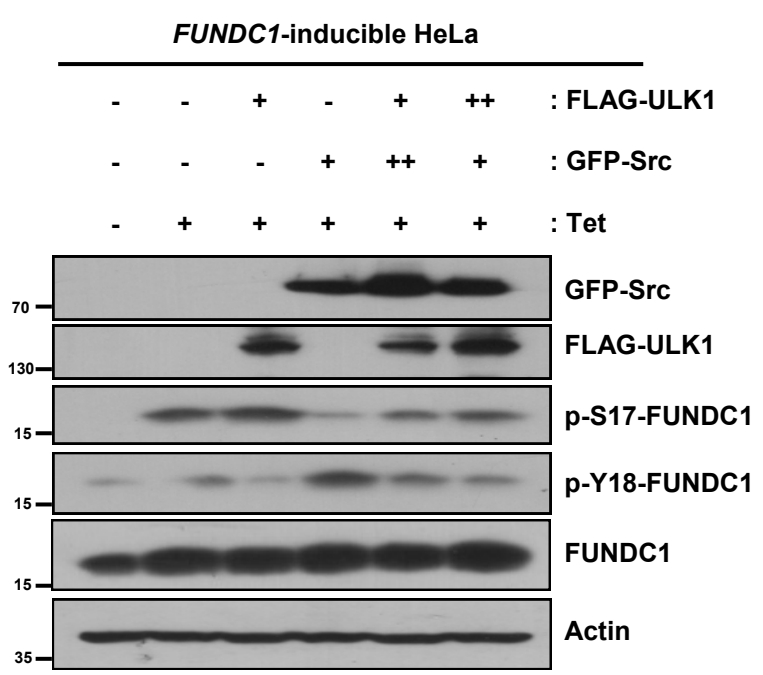


Figure S12. Src kinase inhibits the association of ULK1 puncta with mitochondria and suppresses FUNDC1 (S17) phosphorylation by ULK1 in response to hypoxia

- (A) GFP or GFP-Src was transfected into MEFs, and then cells were treated by hypoxic (1% O₂) condition for 12 hours or left untreated. Cells were fixed by 4% paraformaldehyde and stained with anti- ULK1 (rabbit) and anti- TIM23 (mouse) primary antibodies, then Alexa fluor-555 labeled Donkey anti-Rabbit IgG and Alexa fluor-647 labeled Donkey anti-Mouse IgG secondary antibodies before analysis by immunofluorescence microscopy. Bar, 10 μm. All results are from 3 independent experiments.
- (B) Flag-ULK1 and/or GFP-Src were/was transfected into FUNDC1-inducible HeLa cells. FUNDC1 expression was induced or not by 10 ng/ml Tet and immunoblotted with indicated antibodies. All results are from 3 independent experiments.