

Figure S14. Detailed ImageJ data processing of mitochondrial coverage polled from electron micrographs

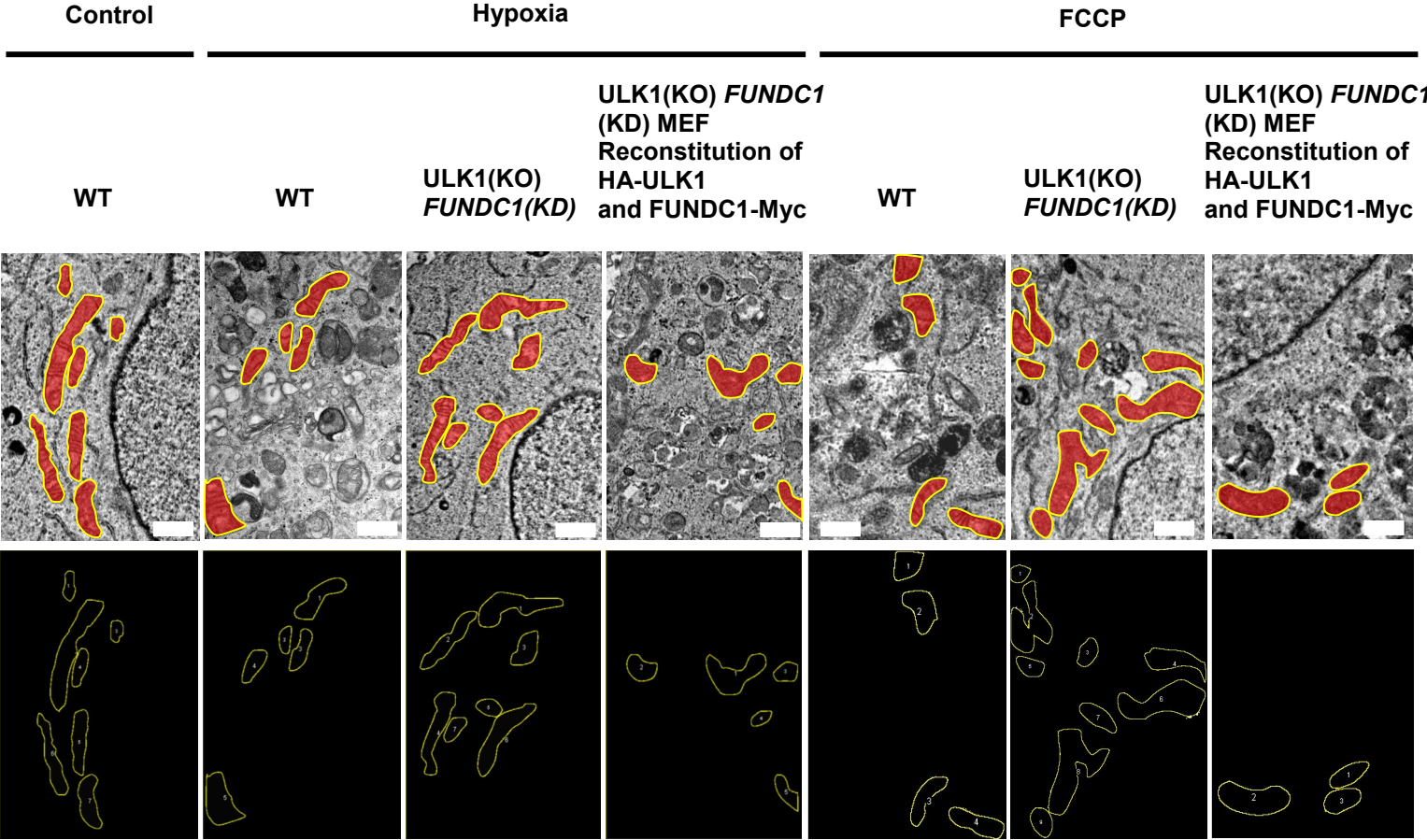


Figure S14. Detailed ImageJ data processing of mitochondrial coverage polled from electron micrographs

Randomly selected sections from different cell samples with a visible nucleus were analyzed. Mitochondria profiles were manually traced by a blinded investigator using ImageJ software. All cells were checked three times for consistency. Mitochondria coverage = (the total area of mitochondria / the total cellular areas) \times 100%. Red area enclosed by yellow line denotes mitochondria. Red area enclosed by yellow line is calculated by ImageJ software.