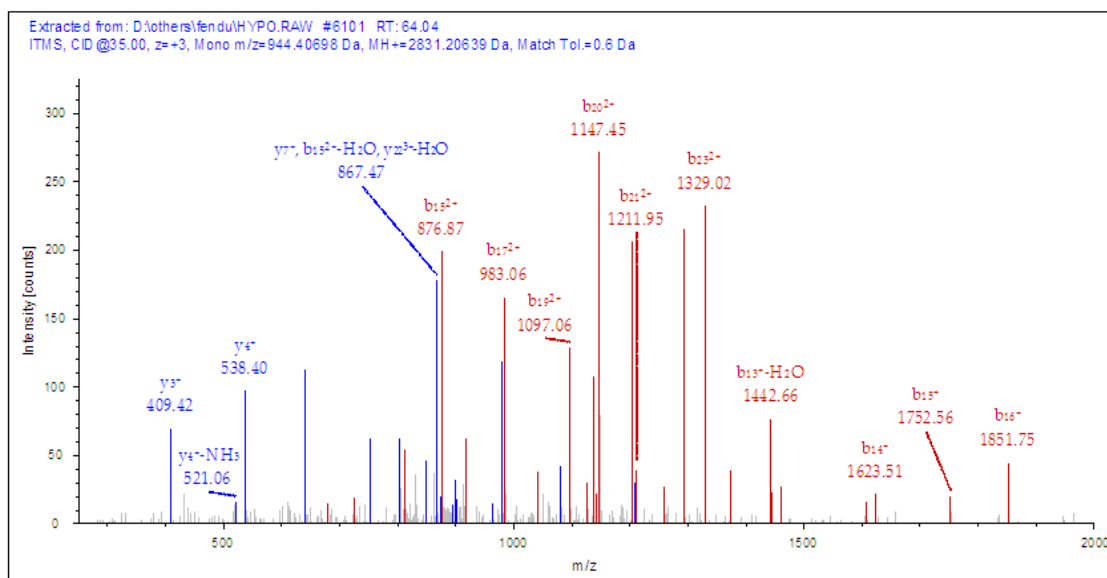


## Figure S2. Mass spectrometric identification of two peptide sequences from immunoprecipitated FUNDC1-myc

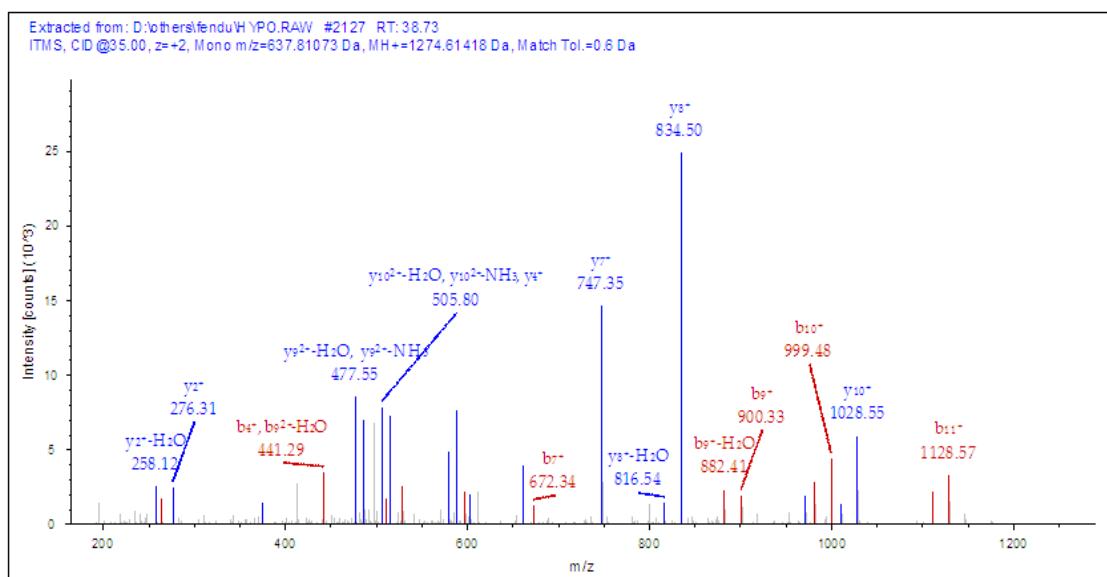
### Peptide sequence of Fundc1

1 matr**npppqd** **yesdddsyev** **ldlteyarrh** qwwnr**vfg**h**s** **sgpmvek**ysv atqivmggvt  
 61 gwcaglfqk vglkaatavg ggfillqias hsgyvqidwk rvekdvnkak rqikranka  
 121 apeinnliee atefikqniv issgfvggfl lglas

Sequence 1: **NPPQDYESDDDSYEVLDLTEYAR**,  
 Charge: +3, Monoisotopic m/z: 944.40698 Da (-3.44 mmu/-3.64 ppm),  
 MH+: 2831.20639 Da, RT: 64.04 min,



Sequence 2: **VFGHSSGPMVEK**,  
 Charge: +2, Monoisotopic m/z: 637.81073 Da (-2.84 mmu/-4.45 ppm),  
 MH+: 1274.61418 Da, RT: 38.73 min,



**Figure S2. Mass spectrometric identification of two peptides sequence from immunoprecipitated FUNDC1-myc**

MEFs were co-transfected with FLAG-ULK1 and Vector-Myc or FUNDC1-Myc for 24 h. Then cells were lysed and immunoprecipitated with anti-FLAG. The samples were run in SDS-PAGE which then stained with Coomassie blue. After that, the band of FUNDC1-Myc was cutted and analyzed with mass spectrometric.