

Figure S3. Specificity test of anti-FUNDC1 (phospho-Ser-17) antibody

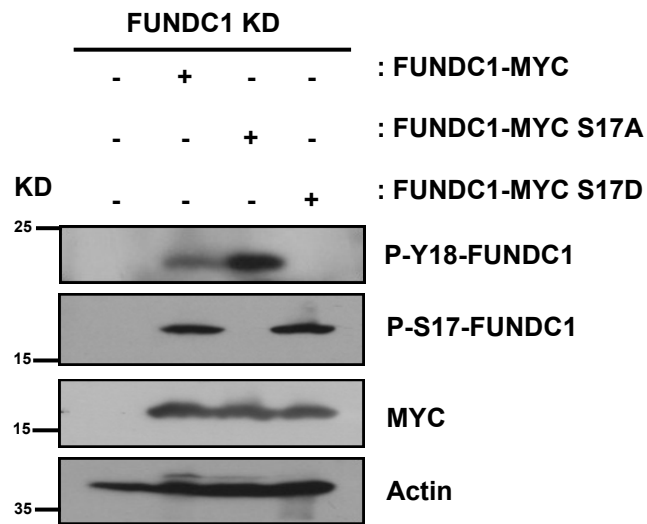


Figure S3. Specificity test of anti-FUNDC1 (phosphor-Ser-17) antibody

FUNDC1 *Knockdown* cells were transfected with FUNDC1-Myc, FUNDC1-Myc S17A or FUNDC1-Myc S17D. Cell lysates were immunoblotted to detect Myc, p-S17-FUNDC1, p-Y18-FUNDC1, and Actin antibodies. All results are from 3 independent experiments.