

Figure S4. ULK1 K46N still has a weak kinase activity

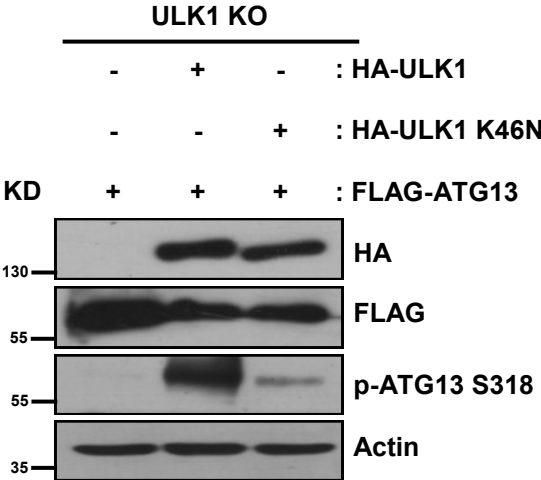


Figure S4. ULK1 K46N still has a weak kinase activity

ULK1 (-/-) cells were co-transfected with HA-ULK1 and FLAG-ATG13 or HA-ULK1 (K46N) and FLAG-ATG13. After 24 h transfection, cells were lysed for immunoblotting with anti-HA, FLAG, p-ATG13 S318, and Actin antibodies. All results are from 3 independent experiments.