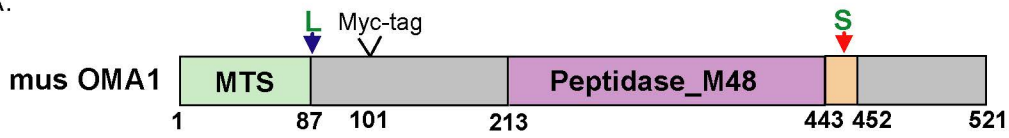
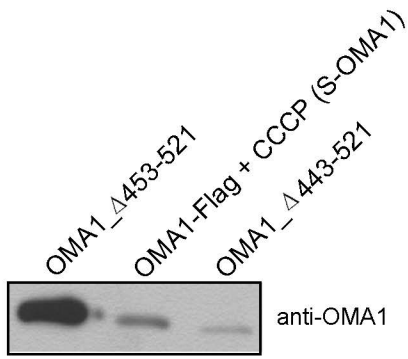


Figure S1

A.



B.



C.

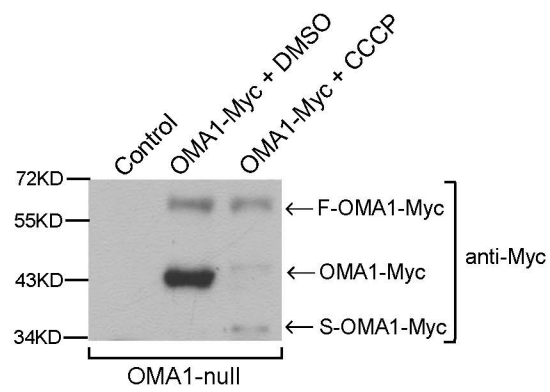


Figure S1. The identification of OMA1 cleavage site.

- A. The Schematic of mouse OMA1 protein. The mitochondrial targeting sequence (MTS) was predicted by MITOPROT; the Peptidase_M48 conserved domain was obtained from SMART database. “L” indicates the cleavage site by MPP, “S” indicate the auto-cleavage site. a Myc-tag was inserted in the OMA1 protein (between OMA1 residue 101 and 102).
- B. Lysates from HeLa cells expressing mouse OMA1(Δ 453-521), OMA1-Flag (CCCP treated) or OMA1(Δ 443-521) were analyzed by Western blot using anti-OMA1 antibody.
- C. OMA1^{-/-} MEFs stably expressing OMA1-Myc were treated with DMSO or CCCP and the lysates were checked by Western blotting with anti-Myc antibody.