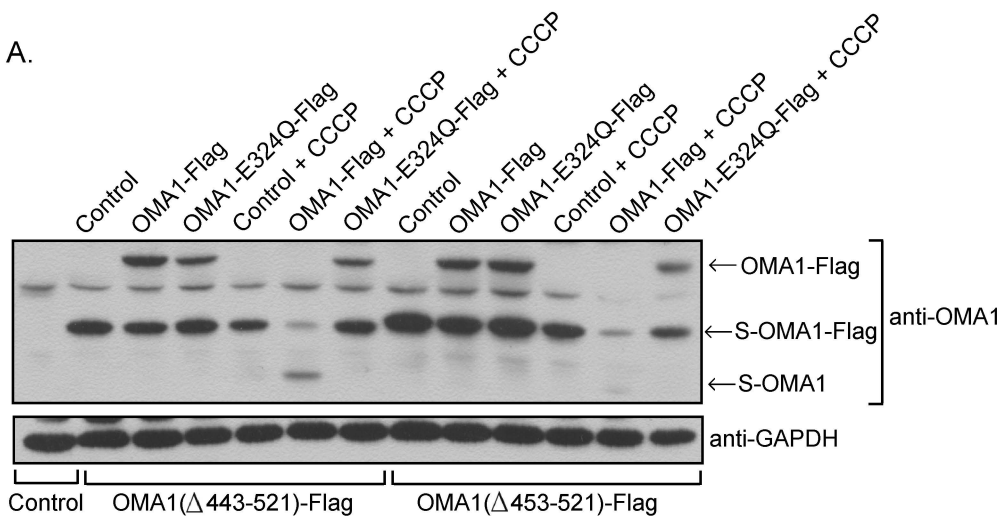
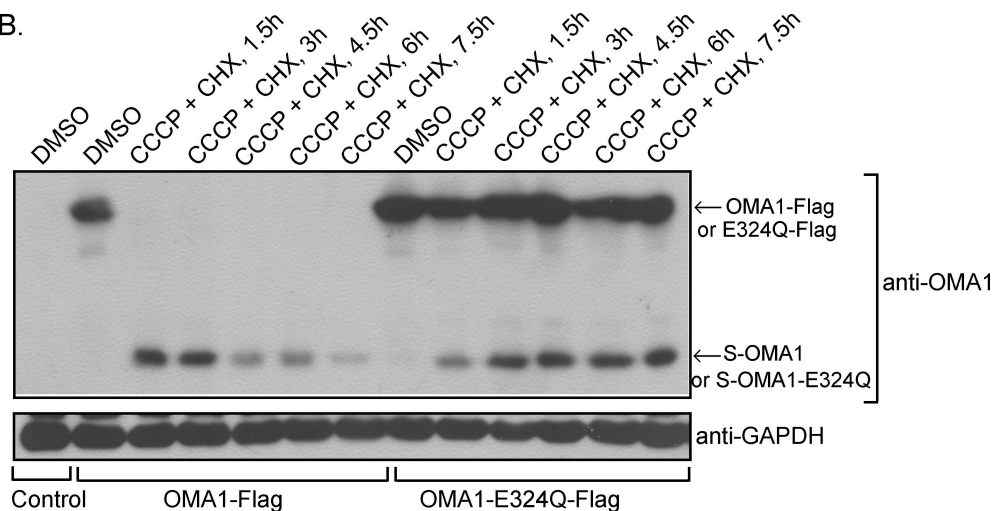


Figure S3

A.



B.



**Figure S3. The processing of OMA1 is required for the degradation of S-OMA1.**

- A. Mouse OMA1( $\Delta$  443-521)-Flag or OMA1( $\Delta$  453-521)-Flag expressed OMA1<sup>-/-</sup>MEFs containing OMA1-Flag or OMA1-E324Q-Flag and control cells were treated with or without CCCP (20 $\mu$ M) for 4h, the whole cell extracts were then blotted and probed with anti-OMA1 and anti-GAPDH antibodies.
- B. OMA1<sup>-/-</sup> MEFs stably expressing OMA1-Flag or OMA1-E324Q-Flag were treated with CCCP (20 $\mu$ M) plus cycloheximide (CHX, 50 $\mu$ g/ml) for indicated time, the cell lysates were then analyzed by Western blot using anti-OMA1 and anti-GAPDH antibodies.