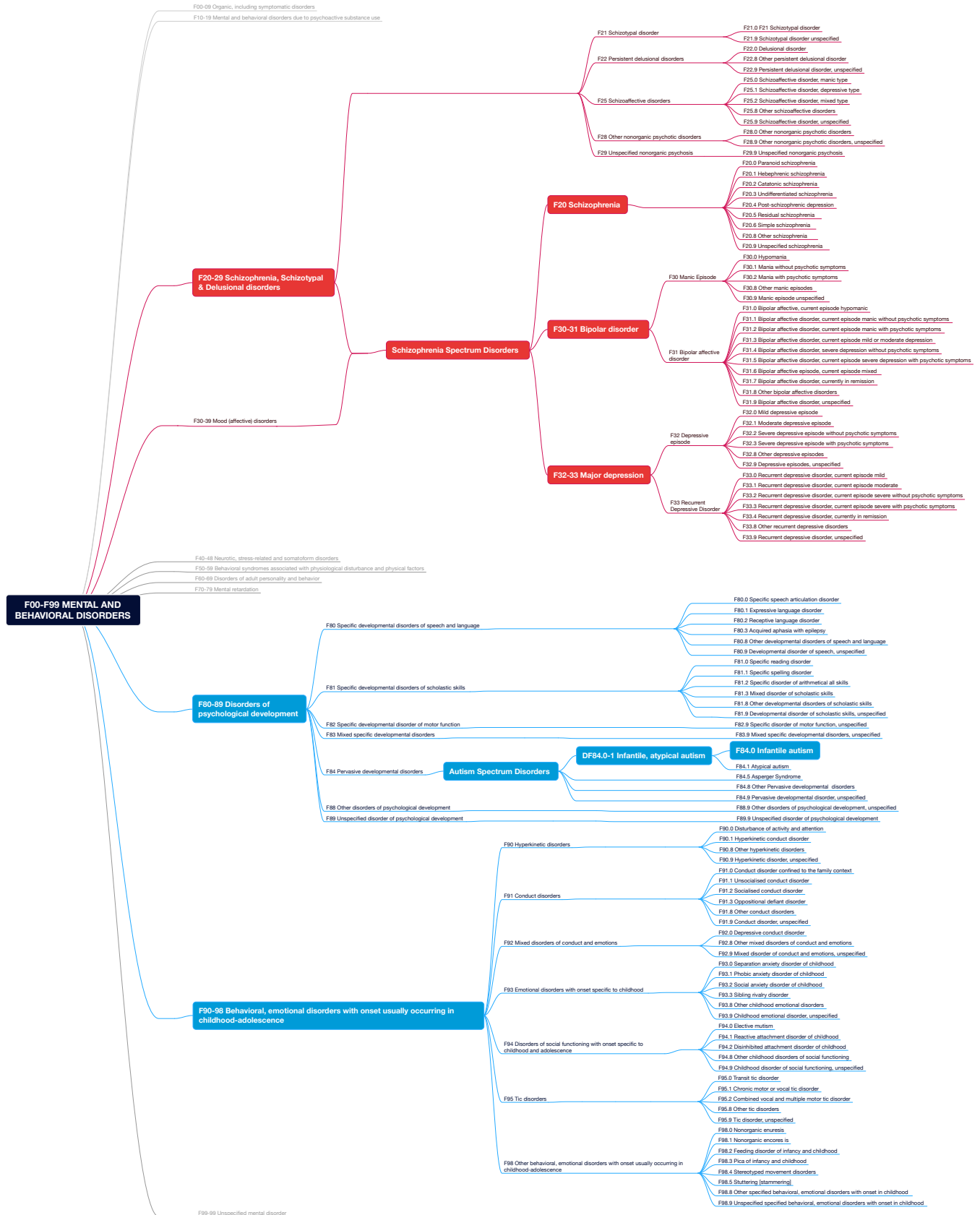


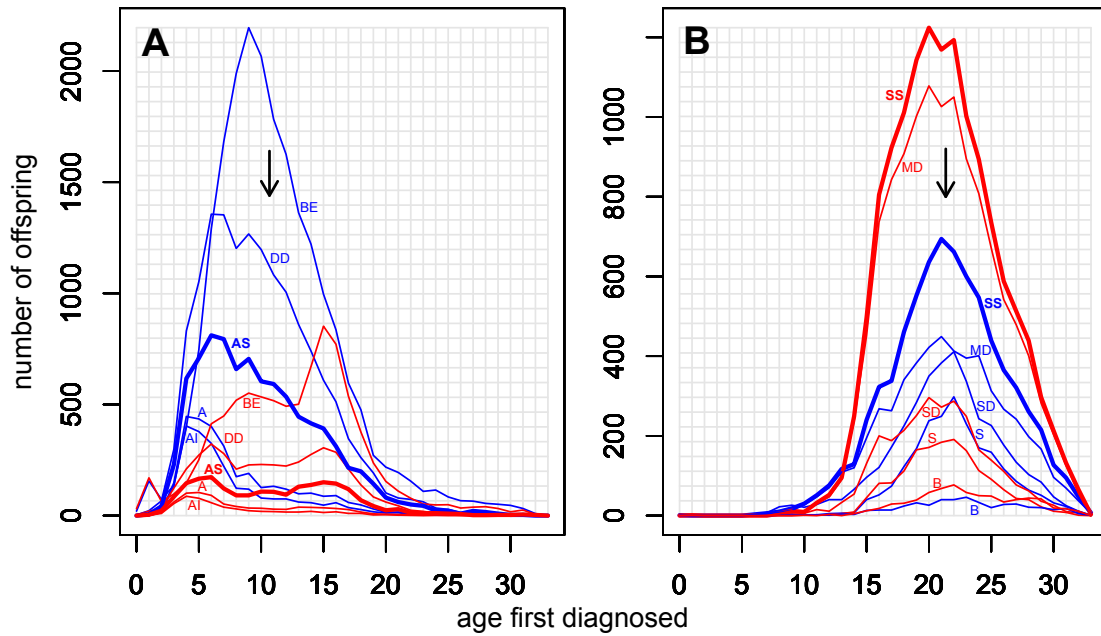
Supplementary Material – Figures and Tables

**Figure S1. Structure of ICD-10 codes used for autism (blue lines), schizophrenia (red lines) and related disorders.** For corresponding ICD-8 codes, see table S2.



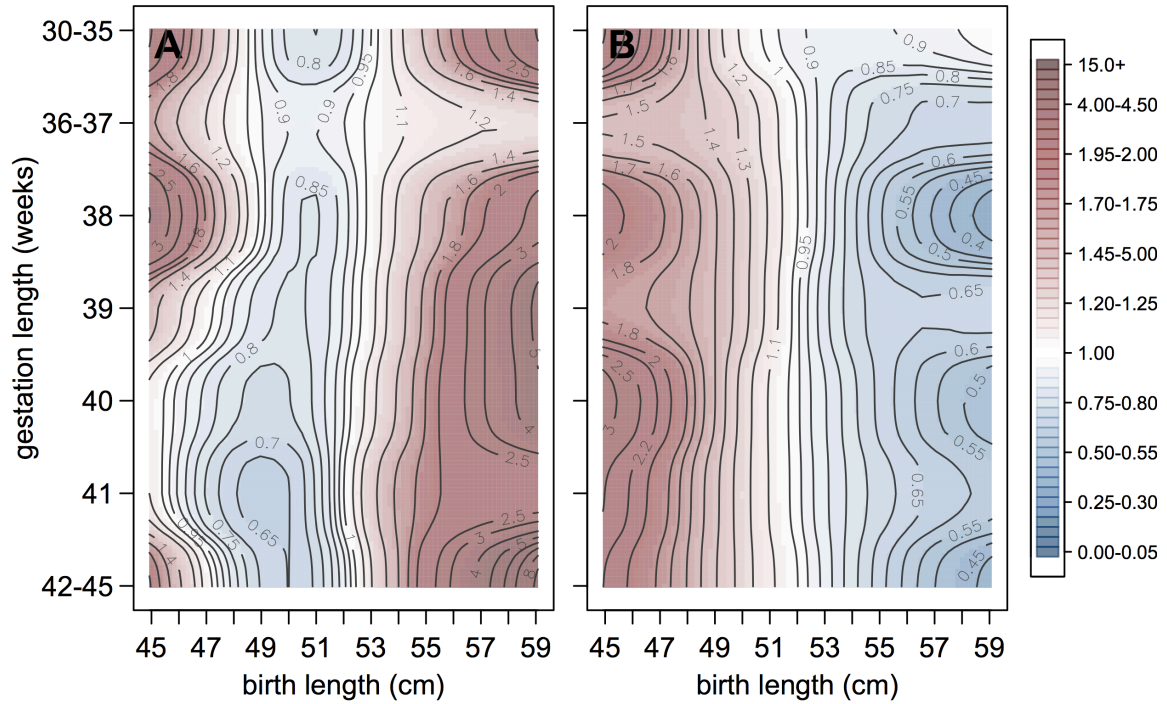
*Supplementary Material – Figures and Tables*

**Figure S2. Age at first diagnosis for autistic (A) and schizophrenic (B) disorders.** Blue lines – males; red lines – females. Autistic disorders: **AS**, autism-spectrum disorders; **AI**, autism-infantile; **A**, autism-all types; **DD**, disorders of psychological development; **BE**, behavioral and emotional disorders. Schizophrenic disorders: **SS**, schizophrenia-spectrum disorders; **S**, schizophrenia; **SD**, schizophrenia-schizotypal-delusional disorders; **B**, bipolar disorder; **MD**, major depression. Black arrows are mean age first diagnosed for all autistic (mean=10.6) and all schizophrenic (mean=21.3) disorders.



*Supplementary Material – Figures and Tables*

**Figure S3. Isoclines of risk for autism-spectrum (A) and schizophrenia-spectrum (B) disorders by birth length and gestation length.** Blue and red shades indicate decreased and increased risk for disorders, respectively. Relative risk ranges are given by color in the key and numerically on the contour lines.



Supplementary Material – Figures and Tables

**Table S1. Study sample characteristics for autism-spectrum (AS) and schizophrenia-spectrum (SS) disorders.** Numbers (*n*), means (multiplied by 100 for binary traits so they appear as percentages) and standard deviations (in brackets) are provided. Total sample size 1,757,770; 95,345/1,662,425 were/were not diagnosed with target disorders across the study period. Absolute risks for AS and SS within the study period were 0.65% and 1.23%, respectively.

	AS	all	SS	all	
offspring with disorder	<i>n</i> = 10890 0.6508 (0.080)	<i>n</i> = 1673315 -	<i>n</i> = 20672 1.2282 (0.110)	<i>n</i> = 1683097 -	
parental	mothers with disorder	0.1377 (0.037)	0.0087 (0.009)	9.1718 (0.289)	3.2725 (0.178)
	fathers with disorder	0.2112 (0.046)	0.0147 (0.012)	5.9307 (0.236)	2.2298 (0.148)
	paternal age (yrs)	31.13 (1.21)	30.79 (1.20)	29.36 (1.21)	30.77 (1.20)
	maternal age (yrs)	28.19 (1.19)	28.14 (1.19)	26.36 (1.20)	28.11 (1.19)
	pre-existing hypertension	0.2388 (0.049)	0.3287 (0.057)	0.1790 (0.042)	0.3275 (0.057)
	pre-existing diabetes	0.4775 (0.069)	0.3866 (0.062)	0.3483 (0.059)	0.3855 (0.062)
	previous induced abortion	21.1387 (0.408)	18.1201 (0.385)	21.5267 (0.411)	18.1424 (0.385)
	previous spontaneous abortion	15.6657 (0.363)	14.2655 (0.350)	16.1523 (0.368)	14.2796 (0.350)
	education (combined highest, yrs)	25.48 (4.72)	25.66 (4.78)	24.22 (5.00)	25.65 (4.78)
	income (combined average, dkk)	348007 (138791)	363947 (173785)	384117 (168980)	364298 (173940)
pregnancy	gestation length (weeks)	39.64 (1.79)	39.76 (1.64)	39.66 (1.67)	39.76 (1.64)
	maternal bleeding	8.6226 (0.281)	7.3800 (0.261)	8.6397 (0.281)	7.3874 (0.262)
	fetal oxygen deprivation	0.0459 (0.021)	0.0873 (0.030)	0.2467 (0.050)	0.0895 (0.030)
	pregnancy oedema	0.6520 (0.080)	0.8055 (0.089)	1.4658 (0.120)	0.8146 (0.090)
	gestational diabetes	0.2204 (0.047)	0.3592 (0.060)	0.0000 (0.000)	0.3557 (0.060)
	gestational hypertension	4.9495 (0.217)	3.7733 (0.191)	4.6536 (0.211)	3.7766 (0.191)
	birth	birth weight group (g)	3507.12 (486.56)	3492.80 (457.03)	3398.90 (454.65)
1 (1850 - 2490)		1.8365 (0.134)	1.2111 (0.109)	1.9350 (0.138)	1.2159 (0.110)
2 (2491 - 2890)		7.8696 (0.269)	7.4490 (0.263)	10.8311 (0.311)	7.4878 (0.263)
3 (2891 - 3290)		22.8834 (0.420)	24.6402 (0.431)	28.5700 (0.452)	24.6998 (0.431)
central (3291 - 3690)		33.9486 (0.474)	35.0046 (0.477)	34.0074 (0.474)	34.9992 (0.477)
4 (3691 - 4090)		22.1947 (0.416)	22.2031 (0.416)	17.9712 (0.384)	22.1511 (0.415)
5 (4091 - 4490)		8.5216 (0.279)	7.4921 (0.263)	5.4325 (0.227)	7.4602 (0.263)
6 (4491 - 5400)		2.7456 (0.163)	1.9999 (0.140)	1.2529 (0.111)	1.9859 (0.140)
birth length group (cm)		52.06 (2.14)	51.87 (2.02)	51.45 (2.03)	51.87 (2.02)
1 (45 - 48.0)		2.9657 (0.170)	2.7147 (0.163)	4.2843 (0.203)	2.7323 (0.163)
2 (48.1 - 49.6)		8.5696 (0.280)	9.1889 (0.289)	11.6667 (0.321)	9.2233 (0.289)
3 (49.7 - 51.2)		23.3511 (0.423)	26.3132 (0.440)	31.2598 (0.464)	26.3928 (0.441)
central (51.3 - 52.7)		30.1151 (0.459)	31.2895 (0.464)	29.9608 (0.458)	31.2807 (0.464)
4 (52.8 - 54.3)		20.0954 (0.401)	18.8623 (0.391)	14.3382 (0.350)	18.7990 (0.391)
5 (54.4 - 55.9)		11.2546 (0.316)	9.1308 (0.288)	6.8137 (0.252)	9.0888 (0.287)
6 (56.0 - 59)		3.6486 (0.188)	2.5006 (0.156)	1.6765 (0.128)	2.4831 (0.156)
APGAR 5 score (1-10)		9.81 (0.82)	9.88 (0.62)	9.88 (0.61)	9.88 (0.62)
other	sex (0=male, 1=female)	19.5041 (0.396)	48.4654 (0.500)	64.3431 (0.479)	48.8477 (0.500)
	birth year	1994.00 (5.97)	1994.17 (8.59)	1984.82 (4.50)	1994.06 (8.63)
	birth season (calendar month)	6.51 (3.38)	6.48 (3.37)	6.40 (3.39)	6.48 (3.37)
	country (0=native, 1=non-native)	5.3903 (0.226)	6.9850 (0.255)	2.6026 (0.159)	6.9415 (0.254)
	demographic parity				
	first	50.1194 (0.500)	44.2131 (0.497)	45.3512 (0.498)	44.1889 (0.497)
	second	33.9210 (0.473)	37.3878 (0.484)	36.3971 (0.481)	37.3980 (0.484)
	third	11.9376 (0.324)	13.7339 (0.344)	13.4868 (0.342)	13.7425 (0.344)
	fourth (or higher)	4.0220 (0.196)	4.6652 (0.211)	4.7649 (0.213)	4.6706 (0.211)
	region most lived				
	Hovedstaden	36.2810 (0.481)	28.5040 (0.451)	27.5058 (0.447)	28.4414 (0.451)
	Sjælland	13.0395 (0.337)	14.7481 (0.355)	13.1821 (0.338)	14.7399 (0.355)
	Syddanmark	18.2002 (0.386)	22.2330 (0.416)	24.9420 (0.433)	22.2924 (0.416)
	Midtjylland	23.6639 (0.425)	23.6836 (0.425)	26.5190 (0.441)	23.7186 (0.425)
	Nordjylland	8.8154 (0.284)	10.8313 (0.311)	7.8512 (0.269)	10.8078 (0.310)

*Supplementary Material – Figures and Tables*

**Table S2. ICD-8 and ICD-10 classification codes used for autism, schizophrenia and related disorders.**

<b>AUTISTIC</b>	
<b>autism - infantile</b>	<b>ICD-8:</b> 299.00
	<b>ICD10:</b> F84.0
<b>autism - all types (infantile and atypical autism)</b>	<b>ICD-8:</b> 299.00, 299.01
	<b>ICD10:</b> F84.0, F84.1, F84.10, F84.11, F84.12
<b>autism-spectrum disorders – infantile and atypical autism, Asperger's syndrome, pervasive developmental disorder, not otherwise specified (PDD-NOS)</b>	<b>ICD-8:</b> 299.00, 299.01, 299.02, 299.03
	<b>ICD10:</b> F84.0, F84.1, F84.10, F84.11, F84.12, F84.5, F84.8, F84.9
<b>disorders of psychological development</b>	<b>ICD-8:</b> 299.00, 299.01, 299.02, 299.03, 306.09, 306.10, 306.11, 306.12, 306.18, 306.19, 306.39
	<b>ICD10:</b> F80, F80.0, F80.1, F80.2, F80.3, F80.8, F80.9, F81.0, F81.1, F81.2, F81.3, F81.8, F81.9, F82, F82.9, F83, F83.9, F84, F84.0, F84.1, F84.10, F84.11, F84.12, F84.2, F84.3, F84.4, F84.5, F84.8, F84.9, F88, F88.9, F89, F89.9
<b>behavioral and emotional disorders with onset in childhood and adolescence</b>	<b>ICD-8:</b> 308.00, 308.01, 308.02, 308.03, 308.04, 308.05, 308.06, 308.07, 308.09, 306.29, 306.49, 306.50, 306.58, 306.59
	<b>ICD10:</b> F90, F90.0, F90.1, F90.8, F90.9, F91, F91.0, F91.1, F91.2, F91.3, F91.8, F91.9, F92, F92.0, F92.8, F92.9, F93, F93.0, F93.1, F93.2, F93.3, F93.8, F93.80, F93.9, F94, F94.0, F94.1, F94.2, F94.8, F94.9, F95.0, F95.1, F95.2, F95.8, F95.9, F98, F98.0, F98.00, F98.01, F98.02, F98.1, F98.10, F98.11, F98.12, F98.2, F98.3, F98.4, F98.40, F98.41, F98.42, F98.5, F98.8, F98.8C, F98.9
<b>SCHIZOPHRENIC</b>	
<b>schizophrenia</b>	<b>ICD-8:</b> 295.09, 295.19, 295.29, 295.39, 295.59, 295.69, 295.89, 295.99
	<b>ICD10:</b> F20, F20.0, F20.00, F20.01, F20.02, F20.03, F20.04, F20.05, F20.06, F20.07, F20.08, F20.09, F20.1, F20.10, F20.11, F20.12, F20.13, F20.14, F20.15, F20.18, F20.19, F20.2, F20.20, F20.21, F20.22, F20.23, F20.24, F20.25, F20.28, F20.29, F20.3, F20.30, F20.31, F20.32, F20.33, F20.34, F20.35, F20.38, F20.39, F20.4, F20.40, F20.44, F20.5, F20.50, F20.51, F20.52, F20.53, F20.54, F20.55, F20.58, F20.59, F20.6, F20.60, F20.61, F20.62, F20.63, F20.64, F20.65, F20.69, F20.8, F20.80, F20.81, F20.84, F20.88, F20.9, F20.90, F20.91, F20.92, F20.93, F20.94, F20.95, F20.98, F20.99
<b>bipolar disorder</b>	<b>ICD-8:</b> 296.19, 296.39
	<b>ICD10:</b> F30, F30.0, F30.1, F30.2, F30.20, F30.21, F30.8, F30.9, F31, F31.0, F31.1, F31.2, F31.20, F31.21, F31.3, F31.30, F31.31, F31.4, F31.5, F31.50, F31.51, F31.6, F31.7, F31.8, F31.9
<b>major depression</b>	<b>ICD-8:</b> 296.09, 296.29, 296.99, 298.09, 300.49
	<b>ICD10:</b> F32, F32.0, F32.00, F32.01, F32.1, F32.10, F32.11, F32.2, F32.3, F32.30, F32.31, F32.8, F32.9, F32.9A, F33, F33.0,

## Supplementary Material – Figures and Tables

		F33.00, F33.01, F33.1, F33.10, F33.11, F33.2, F33.21, F33.3, F33.30, F33.31, F33.4, F33.8, F33.9
<b>schizophrenic-spectrum disorders -</b> schizophrenia, bipolar, major depression	<b>ICD-8:</b>	295.09, 295.19, 295.29, 295.39, 295.59, 295.69, 295.89, 295.99, 296.19, 296.39, 296.09, 296.29, 296.99, 298.09, 300.49
	<b>ICD10:</b>	F20, F20.0, F20.00, F20.01, F20.02, F20.03, F20.04, F20.05, F20.06, F20.07, F20.08, F20.09, F20.1, F20.10, F20.11, F20.12, F20.13, F20.14, F20.15, F20.18, F20.19, F20.2, F20.20, F20.21, F20.22, F20.23, F20.24, F20.25, F20.28, F20.29, F20.3, F20.30, F20.31, F20.32, F20.33, F20.34, F20.35, F20.38, F20.39, F20.4, F20.40, F20.44, F20.5, F20.50, F20.51, F20.52, F20.53, F20.54, F20.55, F20.58, F20.59, F20.6, F20.60, F20.61, F20.62, F20.63, F20.64, F20.65, F20.69, F20.8, F20.80, F20.81, F20.84, F20.88, F20.9, F20.90, F20.91, F20.92, F20.93, F20.94, F20.95, F20.98, F20.99, F30, F30.0, F30.1, F30.2, F30.20, F30.21, F30.8, F30.9, F31, F31.0, F31.1, F31.2, F31.20, F31.21, F31.3, F31.30, F31.31, F31.4, F31.5, F31.50, F31.51, F31.6, F31.7, F31.8, F31.9, F32, F32.0, F32.00, F32.01, F32.1, F32.10, F32.11, F32.2, F32.3, F32.30, F32.31, F32.8, F32.9, F32.9A, F33, F33.0, F33.00, F33.01, F33.1, F33.10, F33.11, F33.2, F33.21, F33.3, F33.30, F33.31, F33.4, F33.8, F33.9
<b>schizophrenia-schizotypal-delusional disorders</b>	<b>ICD-8:</b>	295.09, 295.19, 295.29, 295.39, 295.59, 295.69, 295.89, 295.99, 297.09, 297.19, 297.99, 298.39, 296.89, 301.83
	<b>ICD10:</b>	F20, F20.0, F20.00, F20.01, F20.02, F20.03, F20.04, F20.05, F20.06, F20.07, F20.08, F20.09, F20.1, F20.10, F20.11, F20.12, F20.13, F20.14, F20.15, F20.18, F20.19, F20.2, F20.20, F20.21, F20.22, F20.23, F20.24, F20.25, F20.28, F20.29, F20.3, F20.30, F20.31, F20.32, F20.33, F20.34, F20.35, F20.38, F20.39, F20.4, F20.40, F20.44, F20.5, F20.50, F20.51, F20.52, F20.53, F20.54, F20.55, F20.58, F20.59, F20.6, F20.60, F20.61, F20.62, F20.63, F20.64, F20.65, F20.69, F20.8, F20.80, F20.81, F20.84, F20.88, F20.9, F20.90, F20.91, F20.92, F20.93, F20.94, F20.95, F20.98, F20.99, F21, F21.0, F21.00, F21.9, F22, F22.0, F22.00, F22.2, F22.8, F22.9, F25, F25.0, F25.00, F25.01, F25.1, F25.10, F25.11, F25.2, F25.20, F25.21, F25.8, F25.80, F25.81, F25.9, F25.90, F25.91, F28, F28.0, F28.9, F29, F29.9

*Supplementary Material – Figures and Tables*

**Table S3. ICD-8 and ICD-10 classification codes used for covariates.**

<b>PRE-EXISTING CONDITIONS</b>		
<b>pre-existing maternal hypertension</b> – essential (primary) hypertension, hypertensive heart disease, hypertensive renal disease, hypertensive heart and renal disease, secondary hypertension	<b>ICD-8:</b>	400.09, 400.19, 400.29, 400.39, 400.99, 401.99, 402.99, 403.99, 404.99
	<b>ICD10:</b>	O10, O10.0, O10.0A-0C, O10.1, O10.1A-1C, O10.2, O10.2A-2C, O10.3, O10.3A, O10.4, O10.4A-4C, O10.9, O10.9A-9C, O11, O11.9, O11.9A-9C, I10, I10.9, I11, I11.0, I11.9, I12, I12.0, I12.9, I13, I13.0-2, I13.9, I15, I15.0-2, I15.8-9
<b>pre-existing maternal diabetes</b> – type I (insulin dependent) and type II (non-insulin dependent), malnutrition-related, other, unspecified	<b>ICD-8:</b>	249.00-09, 250.00-09
	<b>ICD10:</b>	E10, E10.0, E10.0A-0F, E10.1-5, E10.5A-5D, E10.6-9, E10.9A, E11, E11.0, E11.0A-0E, E11.1-5, E11.5A-5D, E11.6-9, E11.9A, E12, E12.0, E12.0A-0E, E12.1-5, E12.5A-5C, E12.6-9, E13, E13.0-9, E14, E14.0, E14.0A-0D, E14.1-5, E14.5A-5D, E14.6-9, O24.0, O24.0A-0C, O24.1, O24.1A-1C, O24.2, O24.2A, O24.3, O24.3A-3B
<b>PREGNANCY-INDUCED</b>		
<b>maternal bleeding</b> – haemorrhage in early pregnancy, placenta praevia, premature separation of placenta, antepartum haemorrhage	<b>ICD-8:</b>	632.09, 632.19, 632.29, 632.39, 632.49, 632.99, 651.00-22, 651.24-43, 651.45-60, 651.63, 651.65-66, 651.68-80, 651.82, 651.85-87, 651.89-99
	<b>ICD10:</b>	O20, O20.0, O20.8, O20.8A, O20.8B, O20.9, O44, O44.0-3, O44.9, O45, O45.0, O45.0D, O45.1, O45.1B, O45.2-3, O45.8-9, O46, O46.0, O46.8, O46.8A, O46.9
<b>fetal oxygen deprivation</b> – intrauterine hypoxia, birth asphyxia	<b>ICD-8:</b>	776.39, 776.49, 776.90-93, 776.98-99
	<b>ICD10:</b>	P20, P20.0, P20.0A-0E, P20.1, P20.1A-1B, P20.1D-1E, P20.9, P21, P21.0, P21.0A-0D, P21.1, P21.1A-1D, P21.9
<b>pregnancy oedema</b>	<b>ICD-8:</b>	637.02
	<b>ICD10:</b>	O12, O12.0-2
<b>gestational diabetes</b>	<b>ICD10:</b>	O24.4D
<b>gestational hypertension</b> – pregnancy-induced hypertension, preeclampsia, eclampsia	<b>ICD-8:</b>	637.00, 637.03, 637.04, 637.09, 637.19
	<b>ICD10:</b>	O13, O13.9, O14, O14.0, O14.1, O14.2, O14.9, O15, O15.0, O15.1, O15.2, O15.9

*Supplementary Material – Figures and Tables*

**Table S4. Summary of relative risks for autism-spectrum and schizophrenia-spectrum disorders depending on birth weight and birth length.** Coefficients were obtained from Cox regressions that were adjusted for socioeconomic, environmental and familial risk factors (see tables S5-S14 below for full outputs). Disorders were defined by the International Classification of Diseases ICD-8 and ICD-10 codes (see table S2). Values in **bold** indicate *P*-values < 0.05 after Bonferroni correction.

<b>birth weight</b>	<b>group (g)</b>					
	<b>1</b> (1850-2490)	<b>2</b> (2491-2890)	<b>3</b> (2891-3290)	<b>4</b> (3691-4090)	<b>5</b> (4091-4490)	<b>6</b> (4491-5400)
autism-spectrum disorders	<b>1.39(1.20-1.60)</b>	1.01(0.93-1.08)	<b>0.92(0.87-0.97)</b>	<b>1.06(1.01-1.11)</b>	<b>1.23(1.14-1.32)</b>	<b>1.53(1.36-1.72)</b>
schizophrenia-spectrum disorders	<b>1.25(1.12-1.38)</b>	<b>1.21(1.15-1.26)</b>	<b>1.08(1.04-1.12)</b>	<b>0.94(0.90-0.98)</b>	0.95(0.88-1.00)	0.90(0.79-1.02)
autism-infantile	<b>1.83(1.42-2.25)</b>	1.04(0.89-1.20)	0.94(0.85-1.03)	1.05(0.95-1.16)	<b>1.20(1.04-1.38)</b>	<b>1.45(1.15-1.83)</b>
autism-all types	<b>1.65(1.32-2.06)</b>	1.05(0.92-1.18)	0.94(0.85-1.01)	1.05(0.96-1.14)	<b>1.17(1.03-1.31)</b>	<b>1.50(1.23-1.82)</b>
disorders of psychological development	<b>1.56(1.40-1.73)</b>	<b>1.10(1.04-1.16)</b>	<b>0.96(0.92-0.99)</b>	<b>1.06(1.02-1.10)</b>	<b>1.17(1.10-1.23)</b>	<b>1.47(1.33-1.60)</b>
behavioral and emotional disorders	<b>1.63(1.50-1.76)</b>	<b>1.21(1.16-1.26)</b>	<b>1.03(1.00-1.06)</b>	0.98(0.94-1.01)	1.02(0.97-1.07)	<b>1.23(1.13-1.33)</b>
schizophrenia	<b>1.36(1.08-1.70)</b>	<b>1.31(1.17-1.45)</b>	1.05(0.96-1.13)	1.01(0.92-1.10)	0.96(0.83-1.11)	0.98(0.73-1.29)
schizophrenia-schizotypal-delusional	<b>1.56(1.32-1.83)</b>	<b>1.23(1.13-1.34)</b>	1.05(0.98-1.11)	0.97(0.90-1.03)	0.96(0.85-1.07)	0.99(0.80-1.22)
bipolar disorder	1.21(0.78-1.85)	1.04(0.83-1.28)	1.09(0.94-1.25)	1.06(0.90-1.24)	0.95(0.72-1.24)	0.84(0.48-1.45)
major depression	<b>1.24(1.11-1.38)</b>	<b>1.18(1.12-1.24)</b>	<b>1.09(1.04-1.13)</b>	<b>0.93(0.89-0.97)</b>	<b>0.93(0.87-0.99)</b>	0.89(0.77-1.02)

<b>birth length</b>	<b>group (cm)</b>					
	<b>1</b> (45-48.0)	<b>2</b> (48.1-49.6)	<b>3</b> (49.7-51.2)	<b>4</b> (52.8-54.3)	<b>5</b> (54.4-55.9)	<b>6</b> (56.0-59)
autism-spectrum disorders	1.06(0.94-1.19)	0.95(0.88-1.02)	<b>0.89(0.84-0.93)</b>	<b>1.18(1.11-1.24)</b>	<b>1.31(1.22-1.39)</b>	<b>1.56(1.40-1.73)</b>
schizophrenia-spectrum disorders	<b>1.34(1.24-1.43)</b>	<b>1.24(1.17-1.29)</b>	<b>1.12(1.08-1.16)</b>	<b>0.94(0.90-0.98)</b>	<b>0.88(0.82-0.92)</b>	<b>0.83(0.74-0.92)</b>
autism-infantile	1.20(0.97-1.48)	1.01(0.87-1.15)	<b>0.83(0.74-0.91)</b>	1.11(0.99-1.23)	<b>1.25(1.09-1.41)</b>	<b>1.31(1.04-1.62)</b>
autism-all types	1.20(0.90-1.14)	1.02(0.90-1.14)	<b>0.86(0.78-0.93)</b>	<b>1.13(1.03-1.23)</b>	<b>1.23(1.10-1.37)</b>	<b>1.37(1.13-1.64)</b>
disorders of psychological development	<b>1.17(1.07-1.27)</b>	1.00(0.94-1.05)	<b>0.93(0.89-0.96)</b>	<b>1.13(1.08-1.17)</b>	<b>1.21(1.15-1.27)</b>	<b>1.41(1.30-1.53)</b>
behavioral and emotional disorders	<b>1.40(1.31-1.48)</b>	<b>1.17(1.12-1.21)</b>	1.00(0.97-1.03)	<b>1.04(1.00-1.07)</b>	<b>1.06(1.01-1.10)</b>	<b>1.18(1.09-1.27)</b>
schizophrenia	<b>1.45(1.23-1.70)</b>	<b>1.31(1.17-1.46)</b>	<b>1.09(1.00-1.18)</b>	1.04(0.93-1.14)	1.01(0.88-1.15)	0.98(0.77-1.24)
schizophrenia-schizotypal-delusional	<b>1.47(1.30-1.66)</b>	<b>1.26(1.15-1.37)</b>	<b>1.08(1.01-1.15)</b>	1.03(0.95-1.10)	0.99(0.89-1.09)	1.00(0.83-1.19)
bipolar disorder	0.73(0.49-1.06)	1.03(0.83-1.26)	1.04(0.89-1.20)	0.89(0.73-1.06)	0.87(0.68-1.10)	0.90(0.58-1.37)
major depression	<b>1.34(1.24-1.44)</b>	<b>1.23(1.16-1.29)</b>	<b>1.13(1.08-1.17)</b>	<b>0.93(0.88-0.97)</b>	<b>0.85(0.79-0.90)</b>	<b>0.80(0.70-0.90)</b>



*Supplementary Material – Figures and Tables*

**Tables S5-S14.** For each table below, the top 6 rows give results for birth weight or length groups and the following rows give results for covariates entered into the Cox regressions. Values in **bold** indicate *P*-values < 0.05 after Bonferroni correction and red or blue arrows show significantly increased or decreased risk respectively. Missing coefficients (-) were due to a lack of variation for that variable. LCL, lower 95% confidence limit; UCL, upper 95% confidence limit; SE, standard error of the coefficient.

**Table S5.** Risk of infantile autism by birth weight (a) and length (b).

autism (infantile) [DF84.0]							
(a) birth weight (BW)							
	exp(coef)	LCL	UCL	risk	SE	Z	Pr(Z)
<b>BW group 1</b>	<b>1.83182</b>	<b>1.42743</b>	<b>2.35078</b>	▲	<b>0.12727</b>	<b>4.75625</b>	<b>&lt;0.001</b>
BW group 2	1.04027	0.89943	1.20316	.	0.07422	0.53190	0.595
BW group 3	0.93987	0.85077	1.03830	.	0.05082	-1.22035	0.222
BW group 4	1.05160	0.95092	1.16294	.	0.05135	0.97986	0.327
<b>BW group 5</b>	<b>1.20455</b>	<b>1.04563</b>	<b>1.38763</b>	▲	<b>0.07219</b>	<b>2.57803</b>	<b>0.010</b>
<b>BW group 6</b>	<b>1.45410</b>	<b>1.15120</b>	<b>1.83671</b>	▲	<b>0.11918</b>	<b>3.14138</b>	<b>0.002</b>
maternal disorder	-	-	-	-	-	-	-
paternal disorder	-	-	-	-	-	-	-
<b>paternal age</b>	<b>8.36666</b>	<b>4.54642</b>	<b>15.39694</b>	▲	<b>0.31119</b>	<b>6.82631</b>	<b>&lt;0.001</b>
<b>maternal age</b>	<b>5.18519</b>	<b>2.50629</b>	<b>10.72751</b>	▲	<b>0.37093</b>	<b>4.43701</b>	<b>&lt;0.001</b>
preexisting hypertension	0.54841	0.24550	1.22507	.	0.41007	-1.46493	0.143
preexisting diabetes	1.17944	0.71757	1.93859	.	0.25353	0.65096	0.515
previous abortion (induc.)	1.06846	0.97499	1.17089	.	0.04671	1.41780	0.156
previous abortion (spont.)	1.09761	0.99057	1.21621	.	0.05235	1.77906	0.075
<b>education level</b>	<b>0.97380</b>	<b>0.94863</b>	<b>0.99964</b>	▼	<b>0.01336</b>	<b>-1.98679</b>	<b>0.047</b>
<b>average income</b>	<b>0.89170</b>	<b>0.87682</b>	<b>0.90683</b>	▼	<b>0.00859</b>	<b>-13.35180</b>	<b>&lt;0.001</b>
<b>gestation length</b>	<b>0.96493</b>	<b>0.94492</b>	<b>0.98537</b>	▼	<b>0.01069</b>	<b>-3.33881</b>	<b>0.001</b>
maternal bleeding	1.07958	0.94671	1.23109	.	0.06701	1.14271	0.253
fetal oxygen deprivation	-	-	-	-	-	-	-
pregnancy oedema	1.01615	0.64548	1.59967	.	0.23152	0.06920	0.945
gestational diabetes	1.02910	0.53336	1.98563	.	0.33534	0.08554	0.932
gestational hypertension	1.16285	0.97042	1.39344	.	0.09230	1.63466	0.102
<b>APGAR5 score</b>	<b>0.82925</b>	<b>0.76048</b>	<b>0.90424</b>	▼	<b>0.04417</b>	<b>-4.23914</b>	<b>&lt;0.001</b>
<b>sex</b>	<b>0.23630</b>	<b>0.21492</b>	<b>0.25980</b>	▼	<b>0.04838</b>	<b>-29.82113</b>	<b>&lt;0.001</b>
<b>birth year cohort</b>	<b>1.41300</b>	<b>1.38159</b>	<b>1.44513</b>	▲	<b>0.01147</b>	<b>30.13739</b>	<b>&lt;0.001</b>
birth season	1.00790	0.99699	1.01893	.	0.00555	1.41759	0.156
country	1.00043	0.87571	1.14290	.	0.06793	0.00627	0.995
<b>parity(2nd)</b>	<b>0.88969</b>	<b>0.81577</b>	<b>0.97030</b>	▼	<b>0.04426</b>	<b>-2.64119</b>	<b>0.008</b>
<b>parity(3rd)</b>	<b>0.77907</b>	<b>0.68727</b>	<b>0.88312</b>	▼	<b>0.06397</b>	<b>-3.90305</b>	<b>&lt;0.001</b>
<b>parity(4+)</b>	<b>0.67559</b>	<b>0.55943</b>	<b>0.81587</b>	▼	<b>0.09626</b>	<b>-4.07398</b>	<b>&lt;0.001</b>
<b>region Sjælland</b>	<b>0.84363</b>	<b>0.75802</b>	<b>0.93892</b>	▼	<b>0.05460</b>	<b>-3.11432</b>	<b>0.002</b>
<b>region Syddanmark</b>	<b>0.53260</b>	<b>0.47760</b>	<b>0.59393</b>	▼	<b>0.05561</b>	<b>-11.32900</b>	<b>&lt;0.001</b>
<b>region Midtjylland</b>	<b>0.57154</b>	<b>0.51493</b>	<b>0.63437</b>	▼	<b>0.05321</b>	<b>-10.51314</b>	<b>&lt;0.001</b>
<b>region Nordjylland</b>	<b>0.47744</b>	<b>0.41036</b>	<b>0.55548</b>	▼	<b>0.07724</b>	<b>-9.57146</b>	<b>&lt;0.001</b>

*Supplementary Material – Figures and Tables*

<b>(b) birth length (BL)</b>							
	<b>exp(coef)</b>	<b>LCL</b>	<b>UCL</b>	<b>risk</b>	<b>SE</b>	<b>Z</b>	<b>Pr(Z)</b>
BL group 1	1.20230	0.97175	1.48753	.	0.10862	1.69616	0.090
BL group 2	1.00862	0.87767	1.15912	.	0.07096	0.12100	0.904
<b>BL group 3</b>	<b>0.82762</b>	<b>0.74629</b>	<b>0.91780</b>	<b>∇</b>	<b>0.05277</b>	<b>-3.58526</b>	<b>&lt;0.001</b>
BL group 4	1.10752	0.99536	1.23231	.	0.05448	1.87457	0.061
<b>BL group 5</b>	<b>1.24677</b>	<b>1.09519</b>	<b>1.41933</b>	<b>∧</b>	<b>0.06614</b>	<b>3.33471</b>	<b>0.001</b>
<b>BL group 6</b>	<b>1.30595</b>	<b>1.04993</b>	<b>1.62441</b>	<b>∧</b>	<b>0.11133</b>	<b>2.39756</b>	<b>0.017</b>
maternal disorder	-	-	-	-	-	-	-
paternal disorder	-	-	-	-	-	-	-
<b>paternal age</b>	<b>9.09445</b>	<b>4.91081</b>	<b>16.84223</b>	<b>∧</b>	<b>0.31441</b>	<b>7.02169</b>	<b>&lt;0.001</b>
<b>maternal age</b>	<b>4.79576</b>	<b>2.29881</b>	<b>10.00490</b>	<b>∧</b>	<b>0.37518</b>	<b>4.17860</b>	<b>&lt;0.001</b>
preexisting hypertension	0.57741	0.25846	1.28993	.	0.41011	-1.33918	0.181
preexisting diabetes	1.08126	0.62506	1.87041	.	0.27961	0.27940	0.780
previous abortion (induc.)	1.07239	0.97773	1.17622	.	0.04715	1.48227	0.138
previous abortion (spont.)	1.10170	0.99325	1.22199	.	0.05287	1.83179	0.067
<b>education level</b>	<b>0.97087</b>	<b>0.94553</b>	<b>0.99688</b>	<b>∇</b>	<b>0.01349</b>	<b>-2.19121</b>	<b>0.028</b>
<b>average income</b>	<b>0.88967</b>	<b>0.87464</b>	<b>0.90494</b>	<b>∇</b>	<b>0.00869</b>	<b>-13.45666</b>	<b>&lt;0.001</b>
<b>gestation length</b>	<b>0.97778</b>	<b>0.95657</b>	<b>0.99947</b>	<b>∇</b>	<b>0.01119</b>	<b>-2.00721</b>	<b>0.045</b>
maternal bleeding	1.08700	0.95117	1.24222	.	0.06810	1.22489	0.221
fetal oxygen deprivation	-	-	-	-	-	-	-
pregnancy oedema	1.03258	0.65587	1.62565	.	0.23156	0.13845	0.890
gestational diabetes	1.06637	0.55270	2.05743	.	0.33531	0.19164	0.848
<b>gestational hypertension</b>	<b>1.22430</b>	<b>1.01985</b>	<b>1.46972</b>	<b>∧</b>	<b>0.09322</b>	<b>2.17086</b>	<b>0.030</b>
<b>APGAR5 score</b>	<b>0.83719</b>	<b>0.76233</b>	<b>0.91940</b>	<b>∇</b>	<b>0.04779</b>	<b>-3.71822</b>	<b>&lt;0.001</b>
<b>sex</b>	<b>0.23558</b>	<b>0.21393</b>	<b>0.25941</b>	<b>∇</b>	<b>0.04918</b>	<b>-29.39880</b>	<b>&lt;0.001</b>
<b>birth year cohort</b>	<b>1.41215</b>	<b>1.38043</b>	<b>1.44460</b>	<b>∧</b>	<b>0.01159</b>	<b>29.77416</b>	<b>&lt;0.001</b>
birth season	1.00681	0.99580	1.01794	.	0.00561	1.20936	0.227
country	0.99805	0.87223	1.14202	.	0.06875	-0.02837	0.977
<b>parity(2nd)</b>	<b>0.88130</b>	<b>0.80770</b>	<b>0.96160</b>	<b>∇</b>	<b>0.04449</b>	<b>-2.84016</b>	<b>0.005</b>
<b>parity(3rd)</b>	<b>0.78528</b>	<b>0.69264</b>	<b>0.89031</b>	<b>∇</b>	<b>0.06405</b>	<b>-3.77392</b>	<b>&lt;0.001</b>
<b>parity(4+)</b>	<b>0.67192</b>	<b>0.55548</b>	<b>0.81278</b>	<b>∇</b>	<b>0.09710</b>	<b>-4.09474</b>	<b>&lt;0.001</b>
<b>region Sjælland</b>	<b>0.85916</b>	<b>0.77127</b>	<b>0.95707</b>	<b>∇</b>	<b>0.05506</b>	<b>-2.75694</b>	<b>0.006</b>
<b>region Syddanmark</b>	<b>0.53723</b>	<b>0.48120</b>	<b>0.59978</b>	<b>∇</b>	<b>0.05620</b>	<b>-11.05614</b>	<b>&lt;0.001</b>
<b>region Midtjylland</b>	<b>0.57142</b>	<b>0.51418</b>	<b>0.63503</b>	<b>∇</b>	<b>0.05385</b>	<b>-10.39230</b>	<b>&lt;0.001</b>
<b>region Nordjylland</b>	<b>0.48224</b>	<b>0.41421</b>	<b>0.56145</b>	<b>∇</b>	<b>0.07759</b>	<b>-9.39958</b>	<b>&lt;0.001</b>

Supplementary Material – Figures and Tables

**Table S6.** Risk of autism by birth weight (a) and length (b).

autism (infantile and atypical) [DF84.0-1]							
(a) birth weight (BW)							
	exp(coef)	LCL	UCL	risk	SE	Z	Pr(Z)
<b>BW group 1</b>	<b>1.65273</b>	<b>1.32397</b>	<b>2.06311</b>	<b>▲</b>	<b>0.11316</b>	<b>4.43997</b>	<b>&lt;0.001</b>
BW group 2	1.04870	0.92728	1.18601	.	0.06278	0.75737	0.449
BW group 3	0.93510	0.85907	1.01786	.	0.04327	-1.55082	0.121
BW group 4	1.05134	0.96496	1.14545	.	0.04374	1.14453	0.252
<b>BW group 5</b>	<b>1.16717</b>	<b>1.03284</b>	<b>1.31896</b>	<b>▲</b>	<b>0.06238</b>	<b>2.47799</b>	<b>0.013</b>
<b>BW group 6</b>	<b>1.49784</b>	<b>1.23000</b>	<b>1.82400</b>	<b>▲</b>	<b>0.10052</b>	<b>4.01952</b>	<b>&lt;0.001</b>
<b>maternal disorder</b>	<b>21.05811</b>	<b>2.96155</b>	<b>149.7336</b>	<b>▲</b>	<b>1.00082</b>	<b>3.04479</b>	<b>0.002</b>
paternal disorder	-	-	-	-	-	-	-
<b>paternal age</b>	<b>8.56543</b>	<b>5.10346</b>	<b>14.37583</b>	<b>▲</b>	<b>0.26420</b>	<b>8.12932</b>	<b>&lt;0.001</b>
<b>maternal age</b>	<b>2.61392</b>	<b>1.40749</b>	<b>4.85446</b>	<b>▲</b>	<b>0.31584</b>	<b>3.04217</b>	<b>0.002</b>
preexisting hypertension	0.70622	0.37868	1.31705	.	0.31798	-1.09388	0.274
preexisting diabetes	1.24948	0.82522	1.89186	.	0.21165	1.05231	0.293
previous abortion (induc.)	1.04975	0.97056	1.13541	.	0.04002	1.21324	0.225
previous abortion (spont.)	1.09101	0.99956	1.19082	.	0.04467	1.95005	0.051
<b>education level</b>	<b>0.95773</b>	<b>0.93640</b>	<b>0.97955</b>	<b>▼</b>	<b>0.01149</b>	<b>-3.75755</b>	<b>&lt;0.001</b>
<b>average income</b>	<b>0.90197</b>	<b>0.88916</b>	<b>0.91497</b>	<b>▼</b>	<b>0.00730</b>	<b>-14.13623</b>	<b>&lt;0.001</b>
<b>gestation length</b>	<b>0.96637</b>	<b>0.94921</b>	<b>0.98384</b>	<b>▼</b>	<b>0.00914</b>	<b>-3.74308</b>	<b>&lt;0.001</b>
maternal bleeding	1.08191	0.96692	1.21058	.	0.05733	1.37319	0.170
fetal oxygen deprivation	0.90196	0.22527	3.61142	.	0.70781	-0.14577	0.884
pregnancy oedema	1.13993	0.79415	1.63627	.	0.18442	0.71015	0.478
gestational diabetes	1.21487	0.68746	2.14689	.	0.29051	0.66997	0.503
<b>gestational hypertension</b>	<b>1.16856</b>	<b>1.00309</b>	<b>1.36133</b>	<b>▲</b>	<b>0.07790</b>	<b>1.99957</b>	<b>0.046</b>
<b>APGAR5 score</b>	<b>0.81426</b>	<b>0.75724</b>	<b>0.87558</b>	<b>▼</b>	<b>0.03704</b>	<b>-5.54718</b>	<b>&lt;0.001</b>
<b>sex</b>	<b>0.27112</b>	<b>0.25084</b>	<b>0.29304</b>	<b>▼</b>	<b>0.03967</b>	<b>-32.90055</b>	<b>&lt;0.001</b>
<b>birth year cohort</b>	<b>1.41936</b>	<b>1.39213</b>	<b>1.44712</b>	<b>▲</b>	<b>0.00988</b>	<b>35.43697</b>	<b>&lt;0.001</b>
birth season	1.00457	0.99529	1.01394	.	0.00474	0.96283	0.336
<b>country</b>	<b>0.88255</b>	<b>0.78416</b>	<b>0.99330</b>	<b>▼</b>	<b>0.06031</b>	<b>-2.07143</b>	<b>0.038</b>
<b>parity(2nd)</b>	<b>0.87510</b>	<b>0.81256</b>	<b>0.94245</b>	<b>▼</b>	<b>0.03783</b>	<b>-3.52666</b>	<b>&lt;0.001</b>
<b>parity(3rd)</b>	<b>0.79305</b>	<b>0.71232</b>	<b>0.88293</b>	<b>▼</b>	<b>0.05477</b>	<b>-4.23317</b>	<b>&lt;0.001</b>
<b>parity(4+)</b>	<b>0.71072</b>	<b>0.60430</b>	<b>0.83587</b>	<b>▼</b>	<b>0.08276</b>	<b>-4.12629</b>	<b>&lt;0.001</b>
<b>region Sjælland</b>	<b>0.74274</b>	<b>0.67599</b>	<b>0.81607</b>	<b>▼</b>	<b>0.04804</b>	<b>-6.19048</b>	<b>&lt;0.001</b>
<b>region Syddanmark</b>	<b>0.51087</b>	<b>0.46542</b>	<b>0.56076</b>	<b>▼</b>	<b>0.04754</b>	<b>-14.12840</b>	<b>&lt;0.001</b>
<b>region Midtjylland</b>	<b>0.59957</b>	<b>0.54975</b>	<b>0.65390</b>	<b>▼</b>	<b>0.04426</b>	<b>-11.55803</b>	<b>&lt;0.001</b>
<b>region Nordjylland</b>	<b>0.46328</b>	<b>0.40743</b>	<b>0.52677</b>	<b>▼</b>	<b>0.06554</b>	<b>-11.74056</b>	<b>&lt;0.001</b>
(b) birth length (BL)							
	exp(coef)	LCL	UCL	risk	SE	Z	Pr(Z)
BL group 1	1.19881	0.99886	1.43878	.	0.09310	1.94772	0.051
BL group 2	1.02113	0.90679	1.14988	.	0.06059	0.34508	0.730
<b>BL group 3</b>	<b>0.85665</b>	<b>0.78463</b>	<b>0.93528</b>	<b>▼</b>	<b>0.04481</b>	<b>-3.45331</b>	<b>0.001</b>
<b>BL group 4</b>	<b>1.12941</b>	<b>1.03085</b>	<b>1.23739</b>	<b>▲</b>	<b>0.04659</b>	<b>2.61221</b>	<b>0.009</b>
<b>BL group 5</b>	<b>1.23367</b>	<b>1.10310</b>	<b>1.37970</b>	<b>▲</b>	<b>0.05708</b>	<b>3.67898</b>	<b>&lt;0.001</b>
<b>BL group 6</b>	<b>1.36987</b>	<b>1.13991</b>	<b>1.64622</b>	<b>▲</b>	<b>0.09376</b>	<b>3.35657</b>	<b>0.001</b>

*Supplementary Material – Figures and Tables*

<b>maternal disorder</b>	<b>22.52592</b>	<b>3.16764</b>	<b>160.1878</b>	<b>^</b>	<b>1.00088</b>	<b>3.11194</b>	<b>0.002</b>
paternal disorder	-	-	-	-	-	-	-
<b>paternal age</b>	<b>9.09876</b>	<b>5.39211</b>	<b>15.35343</b>	<b>^</b>	<b>0.26694</b>	<b>8.27191</b>	<b>&lt;0.001</b>
<b>maternal age</b>	<b>2.52073</b>	<b>1.34782</b>	<b>4.71434</b>	<b>^</b>	<b>0.31943</b>	<b>2.89441</b>	<b>0.004</b>
preexisting hypertension	0.66871	0.34679	1.28948	.	0.33503	-1.20110	0.230
preexisting diabetes	1.16765	0.74184	1.83788	.	0.23144	0.66970	0.503
previous abortion (induc.)	1.05243	0.97230	1.13917	.	0.04041	1.26471	0.206
<b>previous abortion (spont.)</b>	<b>1.09553</b>	<b>1.00284</b>	<b>1.19678</b>	<b>^</b>	<b>0.04510</b>	<b>2.02275</b>	<b>0.043</b>
<b>education level</b>	<b>0.95389</b>	<b>0.93243</b>	<b>0.97584</b>	<b>v</b>	<b>0.01161</b>	<b>-4.06721</b>	<b>&lt;0.001</b>
<b>average income</b>	<b>0.89975</b>	<b>0.88683</b>	<b>0.91287</b>	<b>v</b>	<b>0.00738</b>	<b>-14.30656</b>	<b>&lt;0.001</b>
<b>gestation length</b>	<b>0.97797</b>	<b>0.95980</b>	<b>0.99649</b>	<b>v</b>	<b>0.00957</b>	<b>-2.32784</b>	<b>0.020</b>
maternal bleeding	1.09741	0.97931	1.22975	.	0.05809	1.60008	0.110
fetal oxygen deprivation	0.95385	0.23821	3.81949	.	0.70785	-0.06674	0.947
pregnancy oedema	1.16017	0.80821	1.66541	.	0.18444	0.80550	0.421
gestational diabetes	1.26204	0.71418	2.23017	.	0.29049	0.80116	0.423
<b>gestational hypertension</b>	<b>1.22080</b>	<b>1.04604</b>	<b>1.42477</b>	<b>^</b>	<b>0.07883</b>	<b>2.53091</b>	<b>0.011</b>
<b>APGAR5 score</b>	<b>0.82414</b>	<b>0.76183</b>	<b>0.89155</b>	<b>v</b>	<b>0.04011</b>	<b>-4.82161</b>	<b>&lt;0.001</b>
<b>sex</b>	<b>0.27033</b>	<b>0.24978</b>	<b>0.29257</b>	<b>v</b>	<b>0.04034</b>	<b>-32.42783</b>	<b>&lt;0.001</b>
<b>birth year cohort</b>	<b>1.41957</b>	<b>1.39204</b>	<b>1.44764</b>	<b>^</b>	<b>0.00999</b>	<b>35.06562</b>	<b>&lt;0.001</b>
birth season	1.00383	0.99445	1.01329	.	0.00479	0.79770	0.425
<b>country</b>	<b>0.87429</b>	<b>0.77559</b>	<b>0.98556</b>	<b>v</b>	<b>0.06112</b>	<b>-2.19795</b>	<b>0.028</b>
<b>parity(2nd)</b>	<b>0.86883</b>	<b>0.80641</b>	<b>0.93608</b>	<b>v</b>	<b>0.03804</b>	<b>-3.69664</b>	<b>&lt;0.001</b>
<b>parity(3rd)</b>	<b>0.79815</b>	<b>0.71671</b>	<b>0.88883</b>	<b>v</b>	<b>0.05491</b>	<b>-4.10619</b>	<b>&lt;0.001</b>
<b>parity(4+)</b>	<b>0.70744</b>	<b>0.60068</b>	<b>0.83317</b>	<b>v</b>	<b>0.08347</b>	<b>-4.14665</b>	<b>&lt;0.001</b>
<b>region Sjælland</b>	<b>0.75416</b>	<b>0.68588</b>	<b>0.82923</b>	<b>v</b>	<b>0.04842</b>	<b>-5.82724</b>	<b>&lt;0.001</b>
<b>region Syddanmark</b>	<b>0.51135</b>	<b>0.46534</b>	<b>0.56191</b>	<b>v</b>	<b>0.04811</b>	<b>-13.94146</b>	<b>&lt;0.001</b>
<b>region Midtjylland</b>	<b>0.59744</b>	<b>0.54723</b>	<b>0.65226</b>	<b>v</b>	<b>0.04479</b>	<b>-11.49957</b>	<b>&lt;0.001</b>
<b>region Nordjylland</b>	<b>0.46568</b>	<b>0.40927</b>	<b>0.52987</b>	<b>v</b>	<b>0.06588</b>	<b>-11.60084</b>	<b>&lt;0.001</b>

*Supplementary Material – Figures and Tables*

**Table S7.** Risk of autism-spectrum disorders by birth weight (a) and length (b).

autism-spectrum disorders (infantile, atypical, Asperger's, PDD-NOS) [DF84.0-9]

(a) birth weight (BW)

	exp(coef)	LCL	UCL	risk	SE	Z	Pr(Z)
<b>BW group 1</b>	<b>1.39430</b>	<b>1.20937</b>	<b>1.60751</b>	<b>▲</b>	<b>0.07260</b>	<b>4.57833</b>	<b>&lt;0.001</b>
BW group 2	1.00803	0.93584	1.08580	.	0.03792	0.21107	0.833
<b>BW group 3</b>	<b>0.92366</b>	<b>0.87791</b>	<b>0.97180</b>	<b>▼</b>	<b>0.02592</b>	<b>-3.06368</b>	<b>0.002</b>
<b>BW group 4</b>	<b>1.06134</b>	<b>1.00829</b>	<b>1.11717</b>	<b>▲</b>	<b>0.02616</b>	<b>2.27557</b>	<b>0.023</b>
<b>BW group 5</b>	<b>1.23414</b>	<b>1.14844</b>	<b>1.32624</b>	<b>▲</b>	<b>0.03672</b>	<b>5.72897</b>	<b>&lt;0.001</b>
<b>BW group 6</b>	<b>1.53474</b>	<b>1.36412</b>	<b>1.72671</b>	<b>▲</b>	<b>0.06013</b>	<b>7.12380</b>	<b>&lt;0.001</b>
<b>maternal disorder</b>	<b>12.08159</b>	<b>7.26004</b>	<b>20.10524</b>	<b>▲</b>	<b>0.25985</b>	<b>9.58891</b>	<b>&lt;0.001</b>
<b>paternal disorder</b>	<b>13.36558</b>	<b>8.85498</b>	<b>20.17380</b>	<b>▲</b>	<b>0.21006</b>	<b>12.34282</b>	<b>&lt;0.001</b>
<b>paternal age</b>	<b>5.89981</b>	<b>4.31274</b>	<b>8.07092</b>	<b>▲</b>	<b>0.15987</b>	<b>11.10199</b>	<b>&lt;0.001</b>
<b>maternal age</b>	<b>2.50420</b>	<b>1.72160</b>	<b>3.64255</b>	<b>▲</b>	<b>0.19118</b>	<b>4.80147</b>	<b>&lt;0.001</b>
preexisting hypertension	0.77029	0.52340	1.13365	.	0.19716	-1.32373	0.186
preexisting diabetes	1.08497	0.82387	1.42880	.	0.14046	0.58060	0.562
<b>previous abortion (induc.)</b>	<b>1.07317</b>	<b>1.02412</b>	<b>1.12457</b>	<b>▲</b>	<b>0.02387</b>	<b>2.95834</b>	<b>0.003</b>
<b>previous abortion (spont.)</b>	<b>1.05889</b>	<b>1.00436</b>	<b>1.11639</b>	<b>▲</b>	<b>0.02698</b>	<b>2.12105</b>	<b>0.034</b>
education level	0.99805	0.98434	1.01195	.	0.00706	-0.27679	0.782
<b>average income</b>	<b>0.89346</b>	<b>0.88584</b>	<b>0.90115</b>	<b>▼</b>	<b>0.00437</b>	<b>-25.78176</b>	<b>&lt;0.001</b>
<b>gestation length</b>	<b>0.97639</b>	<b>0.96582</b>	<b>0.98708</b>	<b>▼</b>	<b>0.00556</b>	<b>-4.30149</b>	<b>&lt;0.001</b>
<b>maternal bleeding</b>	<b>1.09840</b>	<b>1.02635</b>	<b>1.17552</b>	<b>▲</b>	<b>0.03462</b>	<b>2.71126</b>	<b>0.007</b>
fetal oxygen deprivation	0.61299	0.25494	1.47387	.	0.44761	-1.09338	0.274
pregnancy oedema	0.90462	0.71553	1.14369	.	0.11964	-0.83780	0.402
<b>gestational diabetes</b>	<b>1.64674</b>	<b>1.10109</b>	<b>2.46279</b>	<b>▲</b>	<b>0.20536</b>	<b>2.42892</b>	<b>0.015</b>
<b>gestational hypertension</b>	<b>1.22467</b>	<b>1.12129</b>	<b>1.33758</b>	<b>▲</b>	<b>0.04499</b>	<b>4.50429</b>	<b>&lt;0.001</b>
<b>APGAR5 score</b>	<b>0.84938</b>	<b>0.81216</b>	<b>0.88831</b>	<b>▼</b>	<b>0.02286</b>	<b>-7.14023</b>	<b>&lt;0.001</b>
<b>sex</b>	<b>0.25295</b>	<b>0.24117</b>	<b>0.26531</b>	<b>▼</b>	<b>0.02434</b>	<b>-56.46915</b>	<b>&lt;0.001</b>
<b>birth year cohort</b>	<b>1.40010</b>	<b>1.38348</b>	<b>1.41692</b>	<b>▲</b>	<b>0.00609</b>	<b>55.22799</b>	<b>&lt;0.001</b>
<b>birth season</b>	<b>1.01273</b>	<b>1.00711</b>	<b>1.01839</b>	<b>▲</b>	<b>0.00284</b>	<b>4.45482</b>	<b>&lt;0.001</b>
<b>country</b>	<b>0.56034</b>	<b>0.51287</b>	<b>0.61220</b>	<b>▼</b>	<b>0.04516</b>	<b>-12.82440</b>	<b>&lt;0.001</b>
<b>parity(2nd)</b>	<b>0.79049</b>	<b>0.75621</b>	<b>0.82632</b>	<b>▼</b>	<b>0.02262</b>	<b>-10.39387</b>	<b>&lt;0.001</b>
<b>parity(3rd)</b>	<b>0.70337</b>	<b>0.65835</b>	<b>0.75145</b>	<b>▼</b>	<b>0.03374</b>	<b>-10.42840</b>	<b>&lt;0.001</b>
<b>parity(4+)</b>	<b>0.60519</b>	<b>0.54416</b>	<b>0.67306</b>	<b>▼</b>	<b>0.05423</b>	<b>-9.26015</b>	<b>&lt;0.001</b>
<b>region Sjælland</b>	<b>0.64464</b>	<b>0.60634</b>	<b>0.68537</b>	<b>▼</b>	<b>0.03126</b>	<b>-14.04759</b>	<b>&lt;0.001</b>
<b>region Syddanmark</b>	<b>0.59436</b>	<b>0.56266</b>	<b>0.62783</b>	<b>▼</b>	<b>0.02796</b>	<b>-18.60949</b>	<b>&lt;0.001</b>
<b>region Midtjylland</b>	<b>0.74242</b>	<b>0.70595</b>	<b>0.78077</b>	<b>▼</b>	<b>0.02570</b>	<b>-11.59007</b>	<b>&lt;0.001</b>
<b>region Nordjylland</b>	<b>0.58915</b>	<b>0.54856</b>	<b>0.63274</b>	<b>▼</b>	<b>0.03642</b>	<b>-14.52795</b>	<b>&lt;0.001</b>

(b) birth length (BL)

	exp(coef)	LCL	UCL	risk	SE	Z	Pr(Z)
BL group 1	1.06435	0.94836	1.19452	.	0.05887	1.05932	0.289
BL group 2	0.95495	0.88737	1.02768	.	0.03745	-1.23082	0.218
<b>BL group 3</b>	<b>0.88958</b>	<b>0.84428</b>	<b>0.93732</b>	<b>▼</b>	<b>0.02667</b>	<b>-4.38675</b>	<b>&lt;0.001</b>
<b>BL group 4</b>	<b>1.17947</b>	<b>1.11679</b>	<b>1.24568</b>	<b>▲</b>	<b>0.02786</b>	<b>5.92400</b>	<b>&lt;0.001</b>
<b>BL group 5</b>	<b>1.30871</b>	<b>1.22483</b>	<b>1.39833</b>	<b>▲</b>	<b>0.03379</b>	<b>7.96122</b>	<b>&lt;0.001</b>

*Supplementary Material – Figures and Tables*

<b>BL group 6</b>	<b>1.56050</b>	<b>1.40482</b>	<b>1.73342</b>	<b>^</b>	<b>0.05362</b>	<b>8.29935</b>	<b>&lt;0.001</b>
<b>maternal disorder</b>	<b>12.09829</b>	<b>7.27132</b>	<b>20.12957</b>	<b>^</b>	<b>0.25976</b>	<b>9.59745</b>	<b>&lt;0.001</b>
<b>paternal disorder</b>	<b>13.66294</b>	<b>9.05301</b>	<b>20.62032</b>	<b>^</b>	<b>0.21000</b>	<b>12.45098</b>	<b>&lt;0.001</b>
<b>paternal age</b>	<b>5.83242</b>	<b>4.24909</b>	<b>8.00573</b>	<b>^</b>	<b>0.16160</b>	<b>10.91244</b>	<b>&lt;0.001</b>
<b>maternal age</b>	<b>2.45160</b>	<b>1.67860</b>	<b>3.58059</b>	<b>^</b>	<b>0.19326</b>	<b>4.64005</b>	<b>&lt;0.001</b>
preexisting hypertension	0.74565	0.49880	1.11469	.	0.20514	-1.43070	0.153
preexisting diabetes	1.09035	0.81731	1.45461	.	0.14706	0.58818	0.556
<b>previous abortion (induc.)</b>	<b>1.07456</b>	<b>1.02500</b>	<b>1.12651</b>	<b>^</b>	<b>0.02409</b>	<b>2.98501</b>	<b>0.003</b>
<b>previous abortion (spont.)</b>	<b>1.06317</b>	<b>1.00795</b>	<b>1.12141</b>	<b>^</b>	<b>0.02721</b>	<b>2.25078</b>	<b>0.024</b>
education level	0.99662	0.98280	1.01063	.	0.00712	-0.47555	0.634
<b>average income</b>	<b>0.89240</b>	<b>0.88472</b>	<b>0.90016</b>	<b>v</b>	<b>0.00441</b>	<b>-25.78811</b>	<b>&lt;0.001</b>
<b>gestation length</b>	<b>0.98377</b>	<b>0.97269</b>	<b>0.99497</b>	<b>v</b>	<b>0.00578</b>	<b>-2.83256</b>	<b>0.005</b>
<b>maternal bleeding</b>	<b>1.11357</b>	<b>1.03975</b>	<b>1.19263</b>	<b>^</b>	<b>0.03500</b>	<b>3.07372</b>	<b>0.002</b>
fetal oxygen deprivation	0.63750	0.26513	1.53287	.	0.44763	-1.00573	0.315
pregnancy oedema	0.90345	0.71342	1.14410	.	0.12049	-0.84268	0.399
<b>gestational diabetes</b>	<b>1.70407</b>	<b>1.13944</b>	<b>2.54850</b>	<b>^</b>	<b>0.20535</b>	<b>2.59565</b>	<b>0.009</b>
<b>gestational hypertension</b>	<b>1.24895</b>	<b>1.14197</b>	<b>1.36595</b>	<b>^</b>	<b>0.04569</b>	<b>4.86559</b>	<b>&lt;0.001</b>
<b>APGAR5 score</b>	<b>0.85386</b>	<b>0.81393</b>	<b>0.89574</b>	<b>v</b>	<b>0.02443</b>	<b>-6.46686</b>	<b>&lt;0.001</b>
<b>sex</b>	<b>0.25359</b>	<b>0.24160</b>	<b>0.26618</b>	<b>v</b>	<b>0.02471</b>	<b>-55.51948</b>	<b>&lt;0.001</b>
<b>birth year cohort</b>	<b>1.40069</b>	<b>1.38390</b>	<b>1.41768</b>	<b>^</b>	<b>0.00615</b>	<b>54.76358</b>	<b>&lt;0.001</b>
<b>birth season</b>	<b>1.01262</b>	<b>1.00695</b>	<b>1.01833</b>	<b>^</b>	<b>0.00287</b>	<b>4.37370</b>	<b>&lt;0.001</b>
<b>country</b>	<b>0.56125</b>	<b>0.51323</b>	<b>0.61376</b>	<b>v</b>	<b>0.04564</b>	<b>-12.65630</b>	<b>&lt;0.001</b>
<b>parity(2nd)</b>	<b>0.79009</b>	<b>0.75573</b>	<b>0.82602</b>	<b>v</b>	<b>0.02269</b>	<b>-10.38334</b>	<b>&lt;0.001</b>
<b>parity(3rd)</b>	<b>0.70412</b>	<b>0.65886</b>	<b>0.75248</b>	<b>v</b>	<b>0.03389</b>	<b>-10.35007</b>	<b>&lt;0.001</b>
<b>parity(4+)</b>	<b>0.60835</b>	<b>0.54665</b>	<b>0.67700</b>	<b>v</b>	<b>0.05456</b>	<b>-9.10999</b>	<b>&lt;0.001</b>
<b>region Sjælland</b>	<b>0.65103</b>	<b>0.61205</b>	<b>0.69250</b>	<b>v</b>	<b>0.03150</b>	<b>-13.62464</b>	<b>&lt;0.001</b>
<b>region Syddanmark</b>	<b>0.59629</b>	<b>0.56418</b>	<b>0.63023</b>	<b>v</b>	<b>0.02824</b>	<b>-18.30679</b>	<b>&lt;0.001</b>
<b>region Midtjylland</b>	<b>0.74220</b>	<b>0.70538</b>	<b>0.78094</b>	<b>v</b>	<b>0.02596</b>	<b>-11.48484</b>	<b>&lt;0.001</b>
<b>region Nordjylland</b>	<b>0.59079</b>	<b>0.54985</b>	<b>0.63479</b>	<b>v</b>	<b>0.03665</b>	<b>-14.36078</b>	<b>&lt;0.001</b>

*Supplementary Material – Figures and Tables*

**Table S8.** Risk of disorders of psychological development by birth weight (a) and length (b).

disorders of psychological development [DF80-89]							
(a) birth weight (BW)							
	exp(coef)	LCL	UCL	risk	SE	Z	Pr(Z)
BW group 1	1.56176	1.40870	1.73146	▲	0.05263	8.47105	<0.001
BW group 2	1.10178	1.04293	1.16396	▲	0.02801	3.46062	0.001
BW group 3	0.96038	0.92415	0.99803	▼	0.01962	-2.06048	0.039
BW group 4	1.06280	1.02191	1.10532	▲	0.02002	3.04295	0.002
BW group 5	1.16863	1.10466	1.23631	▲	0.02872	5.42554	<0.001
BW group 6	1.46828	1.33921	1.60980	▲	0.04695	8.18152	<0.001
maternal disorder	3.99716	2.82395	5.65777	▲	0.17727	7.81615	<0.001
paternal disorder	3.61045	2.72595	4.78194	▲	0.14338	8.95417	<0.001
paternal age	3.48352	2.74996	4.41275	▲	0.12064	10.34493	<0.001
maternal age	0.95289	0.71859	1.26359	.	0.14399	-0.33514	0.738
preexisting hypertension	0.76874	0.56924	1.03815	.	0.15329	-1.71570	0.086
preexisting diabetes	1.19712	0.98227	1.45897	.	0.10093	1.78270	0.075
previous abortion (induc.)	1.11454	1.07592	1.15455	▲	0.01800	6.02606	<0.001
previous abortion (spont.)	1.10030	1.05759	1.14473	▲	0.02020	4.73246	<0.001
education level	0.94773	0.93773	0.95785	▼	0.00542	-9.90878	<0.001
average income	0.88499	0.87918	0.89085	▼	0.00336	-36.32376	<0.001
gestation length	0.96600	0.95813	0.97393	▼	0.00417	-8.29338	<0.001
maternal bleeding	1.14912	1.09256	1.20861	▲	0.02575	5.39726	<0.001
fetal oxygen deprivation	0.75302	0.43693	1.29780	.	0.27772	-1.02137	0.307
pregnancy oedema	1.01841	0.86271	1.20222	.	0.08466	0.21552	0.829
gestational diabetes	1.41470	0.96857	2.06632	.	0.19330	1.79476	0.073
gestational hypertension	1.16275	1.08607	1.24484	▲	0.03481	4.33218	<0.001
APGAR5 score	0.85316	0.82452	0.88279	▼	0.01742	-9.11662	<0.001
sex	0.29252	0.28252	0.30287	▼	0.01775	-69.26244	<0.001
birth year cohort	1.32329	1.31198	1.33470	▲	0.00438	63.96149	<0.001
birth season	1.01632	1.01203	1.02062	▲	0.00216	7.50027	<0.001
country	0.46494	0.43359	0.49856	▼	0.03562	-21.50110	<0.001
parity(2nd)	0.90601	0.87592	0.93713	▼	0.01723	-5.72853	<0.001
parity(3rd)	0.82828	0.78787	0.87077	▼	0.02552	-7.38217	<0.001
parity(4+)	0.73227	0.67647	0.79267	▼	0.04044	-7.70587	<0.001
region Sjælland	0.60099	0.57192	0.63154	▼	0.02530	-20.12832	<0.001
region Syddanmark	0.64085	0.61431	0.66853	▼	0.02158	-20.61974	<0.001
region Midtjylland	0.98007	0.94437	1.01711	.	0.01893	-1.06360	0.288
region Nordjylland	0.62131	0.58811	0.65637	▼	0.02801	-16.99023	<0.001

**(b) birth length (BL)**

	exp(coef)	LCL	UCL	risk	SE	Z	Pr(Z)
BL group 1	1.16835	1.07411	1.27085	▲	0.04291	3.62635	<0.001
BL group 2	1.00249	0.94906	1.05893	.	0.02795	0.08897	0.929
BL group 3	0.93147	0.89563	0.96875	▼	0.02002	-3.54589	<0.001
BL group 4	1.12669	1.08024	1.17515	▲	0.02148	5.55290	<0.001

*Supplementary Material – Figures and Tables*

<b>BL group 5</b>	<b>1.21416</b>	<b>1.15292</b>	<b>1.27865</b>	<b>▲</b>	<b>0.02641</b>	<b>7.34890</b>	<b>&lt;0.001</b>
<b>BL group 6</b>	<b>1.41326</b>	<b>1.30009</b>	<b>1.53629</b>	<b>▲</b>	<b>0.04259</b>	<b>8.12206</b>	<b>&lt;0.001</b>
<b>maternal disorder</b>	<b>4.14804</b>	<b>2.93054</b>	<b>5.87137</b>	<b>▲</b>	<b>0.17727</b>	<b>8.02506</b>	<b>&lt;0.001</b>
<b>paternal disorder</b>	<b>3.68367</b>	<b>2.78113</b>	<b>4.87911</b>	<b>▲</b>	<b>0.14340</b>	<b>9.09299</b>	<b>&lt;0.001</b>
<b>paternal age</b>	<b>3.48503</b>	<b>2.74368</b>	<b>4.42670</b>	<b>▲</b>	<b>0.12203</b>	<b>10.23074</b>	<b>&lt;0.001</b>
maternal age	0.97357	0.73174	1.29532	.	0.14569	-0.18387	0.854
preexisting hypertension	0.75416	0.55235	1.02971	.	0.15889	-1.77570	0.076
preexisting diabetes	1.17227	0.95061	1.44563	.	0.10694	1.48629	0.137
<b>previous abortion (induc.)</b>	<b>1.11113</b>	<b>1.07220</b>	<b>1.15147</b>	<b>▲</b>	<b>0.01820</b>	<b>5.79047</b>	<b>&lt;0.001</b>
<b>previous abortion (spont.)</b>	<b>1.10049</b>	<b>1.05732</b>	<b>1.14542</b>	<b>▲</b>	<b>0.02042</b>	<b>4.68976</b>	<b>&lt;0.001</b>
<b>education level</b>	<b>0.94579</b>	<b>0.93570</b>	<b>0.95598</b>	<b>▼</b>	<b>0.00547</b>	<b>-10.18996</b>	<b>&lt;0.001</b>
<b>average income</b>	<b>0.88374</b>	<b>0.87787</b>	<b>0.88965</b>	<b>▼</b>	<b>0.00340</b>	<b>-36.34642</b>	<b>&lt;0.001</b>
<b>gestation length</b>	<b>0.97399</b>	<b>0.96572</b>	<b>0.98233</b>	<b>▼</b>	<b>0.00435</b>	<b>-6.05698</b>	<b>&lt;0.001</b>
<b>maternal bleeding</b>	<b>1.15856</b>	<b>1.10072</b>	<b>1.21943</b>	<b>▲</b>	<b>0.02613</b>	<b>5.63254</b>	<b>&lt;0.001</b>
fetal oxygen deprivation	0.78206	0.45376	1.34789	.	0.27774	-0.88507	0.376
pregnancy oedema	1.01839	0.86168	1.20361	.	0.08526	0.21378	0.831
<b>gestational diabetes</b>	<b>1.46587</b>	<b>1.00361</b>	<b>2.14103</b>	<b>▲</b>	<b>0.19329</b>	<b>1.97862</b>	<b>0.048</b>
<b>gestational hypertension</b>	<b>1.19015</b>	<b>1.11047</b>	<b>1.27555</b>	<b>▲</b>	<b>0.03536</b>	<b>4.92340</b>	<b>&lt;0.001</b>
<b>APGAR5 score</b>	<b>0.85802</b>	<b>0.82720</b>	<b>0.88999</b>	<b>▼</b>	<b>0.01866</b>	<b>-8.20379</b>	<b>&lt;0.001</b>
<b>sex</b>	<b>0.29336</b>	<b>0.28318</b>	<b>0.30391</b>	<b>▼</b>	<b>0.01802</b>	<b>-68.05055</b>	<b>&lt;0.001</b>
<b>birth year cohort</b>	<b>1.32283</b>	<b>1.31142</b>	<b>1.33435</b>	<b>▲</b>	<b>0.00442</b>	<b>63.27202</b>	<b>&lt;0.001</b>
<b>birth season</b>	<b>1.01623</b>	<b>1.01189</b>	<b>1.02058</b>	<b>▲</b>	<b>0.00218</b>	<b>7.38235</b>	<b>&lt;0.001</b>
<b>country</b>	<b>0.46503</b>	<b>0.43331</b>	<b>0.49908</b>	<b>▼</b>	<b>0.03605</b>	<b>-21.23810</b>	<b>&lt;0.001</b>
<b>parity(2nd)</b>	<b>0.90077</b>	<b>0.87072</b>	<b>0.93185</b>	<b>▼</b>	<b>0.01731</b>	<b>-6.03718</b>	<b>&lt;0.001</b>
<b>parity(3rd)</b>	<b>0.82436</b>	<b>0.78392</b>	<b>0.86690</b>	<b>▼</b>	<b>0.02567</b>	<b>-7.52476</b>	<b>&lt;0.001</b>
<b>parity(4+)</b>	<b>0.72949</b>	<b>0.67349</b>	<b>0.79014</b>	<b>▼</b>	<b>0.04075</b>	<b>-7.74016</b>	<b>&lt;0.001</b>
<b>region Sjælland</b>	<b>0.60515</b>	<b>0.57556</b>	<b>0.63627</b>	<b>▼</b>	<b>0.02558</b>	<b>-19.63378</b>	<b>&lt;0.001</b>
<b>region Syddanmark</b>	<b>0.64346</b>	<b>0.61650</b>	<b>0.67160</b>	<b>▼</b>	<b>0.02184</b>	<b>-20.18973</b>	<b>&lt;0.001</b>
region Midtjylland	0.98428	0.94805	1.02190	.	0.01914	-0.82780	0.408
<b>region Nordjylland</b>	<b>0.62402</b>	<b>0.59046</b>	<b>0.65949</b>	<b>▼</b>	<b>0.02821</b>	<b>-16.71872</b>	<b>&lt;0.001</b>



*Supplementary Material – Figures and Tables*

**Table S9.** Risk of behavioral and emotional disorders by birth weight (a) and length (b).

behavioral and emotional disorders with onset in childhood and adolescence [DF90-98]							
(a) birth weight (BW)							
	exp(coef)	LCL	UCL	risk	SE	Z	Pr(Z)
BW group 1	1.63323	1.50912	1.76754	▲	0.04032	12.16547	<0.001
BW group 2	1.21274	1.16340	1.26418	▲	0.02119	9.10132	<0.001
BW group 3	1.03096	1.00076	1.06207	▲	0.01517	2.01019	0.044
BW group 4	0.97950	0.94875	1.01124	.	0.01627	-1.27290	0.203
BW group 5	1.02353	0.97622	1.07313	.	0.02414	0.96328	0.335
BW group 6	1.23077	1.13626	1.33315	▲	0.04077	5.09338	<0.001
maternal disorder	3.44810	3.15642	3.76675	▲	0.04510	27.44852	<0.001
paternal disorder	2.80617	2.52425	3.11957	▲	0.05402	19.10102	<0.001
paternal age	1.49203	1.24366	1.79000	▲	0.09290	4.30718	<0.001
maternal age	0.20266	0.16285	0.25221	▼	0.11160	-14.30379	<0.001
preexisting hypertension	0.80826	0.63062	1.03593	.	0.12662	-1.68121	0.093
preexisting diabetes	1.23017	1.05040	1.44072	▲	0.08061	2.56993	0.010
previous abortion (induc.)	1.19452	1.16247	1.22747	▲	0.01388	12.80559	<0.001
previous abortion (spont.)	1.10941	1.07524	1.14467	▲	0.01596	6.50472	<0.001
education level	0.87715	0.86965	0.88472	▼	0.00438	-29.91251	<0.001
average income	0.86154	0.85701	0.86610	▼	0.00269	-55.35771	<0.001
gestation length	0.96374	0.95756	0.96996	▼	0.00328	-11.25245	<0.001
maternal bleeding	1.22074	1.17429	1.26902	▲	0.01979	10.07833	<0.001
fetal oxygen deprivation	1.03673	0.73262	1.46707	.	0.17715	0.20362	0.839
pregnancy oedema	1.09404	0.96988	1.23410	.	0.06146	1.46232	0.144
gestational diabetes	1.06703	0.67140	1.69579	.	0.23637	0.27448	0.784
gestational hypertension	1.13620	1.07597	1.19980	▲	0.02779	4.59502	<0.001
APGAR5 score	0.89619	0.87121	0.92190	▼	0.01443	-7.59644	<0.001
sex	0.43824	0.42742	0.44934	▼	0.01276	-64.64437	<0.001
birth year cohort	1.32077	1.31168	1.32991	▲	0.00352	78.99765	<0.001
birth season	1.01419	1.01080	1.01758	▲	0.00171	8.26211	<0.001
country	0.29574	0.27809	0.31451	▼	0.03139	-38.80725	<0.001
parity(2nd)	1.01432	0.98723	1.04214	.	0.01381	1.02944	0.303
parity(3rd)	1.03267	0.99253	1.07444	.	0.02023	1.58927	0.112
parity(4+)	0.98680	0.92838	1.04891	.	0.03114	-0.42658	0.670
region Sjælland	0.74424	0.71765	0.77181	▼	0.01856	-15.91483	<0.001
region Syddanmark	0.77739	0.75307	0.80249	▼	0.01621	-15.53049	<0.001
region Midtjylland	0.87276	0.84635	0.89999	▼	0.01568	-8.68141	<0.001
region Nordjylland	0.43949	0.41821	0.46185	▼	0.02532	-32.46975	<0.001

(b) birth length (BL)

	exp(coef)	LCL	UCL	risk	SE	Z	Pr(Z)
BL group 1	1.39922	1.31627	1.48741	▲	0.03118	10.77242	<0.001
BL group 2	1.16856	1.12168	1.21739	▲	0.02089	7.45661	<0.001
BL group 3	1.00459	0.97445	1.03566	.	0.01554	0.29470	0.768
BL group 4	1.04066	1.00547	1.07708	▲	0.01755	2.27075	0.023

*Supplementary Material – Figures and Tables*

<b>BL group 5</b>	<b>1.05568</b>	<b>1.01078</b>	<b>1.10258</b>	<b>^</b>	<b>0.02217</b>	<b>2.44371</b>	<b>0.015</b>
<b>BL group 6</b>	<b>1.18179</b>	<b>1.09933</b>	<b>1.27043</b>	<b>^</b>	<b>0.03690</b>	<b>4.52632</b>	<b>&lt;0.001</b>
<b>maternal disorder</b>	<b>3.47888</b>	<b>3.18132</b>	<b>3.80427</b>	<b>^</b>	<b>0.04562</b>	<b>27.32764</b>	<b>&lt;0.001</b>
<b>paternal disorder</b>	<b>2.82410</b>	<b>2.53881</b>	<b>3.14145</b>	<b>^</b>	<b>0.05433</b>	<b>19.10742</b>	<b>&lt;0.001</b>
<b>paternal age</b>	<b>1.48923</b>	<b>1.23917</b>	<b>1.78976</b>	<b>^</b>	<b>0.09379</b>	<b>4.24643</b>	<b>&lt;0.001</b>
<b>maternal age</b>	<b>0.21252</b>	<b>0.17040</b>	<b>0.26504</b>	<b>v</b>	<b>0.11269</b>	<b>-13.74375</b>	<b>&lt;0.001</b>
preexisting hypertension	0.83211	0.64665	1.07075	.	0.12865	-1.42862	0.153
<b>preexisting diabetes</b>	<b>1.20534</b>	<b>1.02227</b>	<b>1.42119</b>	<b>^</b>	<b>0.08405</b>	<b>2.22205</b>	<b>0.026</b>
<b>previous abortion (induc.)</b>	<b>1.19077</b>	<b>1.15851</b>	<b>1.22392</b>	<b>^</b>	<b>0.01401</b>	<b>12.46199</b>	<b>&lt;0.001</b>
<b>previous abortion (spont.)</b>	<b>1.10849</b>	<b>1.07403</b>	<b>1.14406</b>	<b>^</b>	<b>0.01612</b>	<b>6.39142</b>	<b>&lt;0.001</b>
<b>education level</b>	<b>0.87548</b>	<b>0.86793</b>	<b>0.88309</b>	<b>v</b>	<b>0.00442</b>	<b>-30.10551</b>	<b>&lt;0.001</b>
<b>average income</b>	<b>0.86080</b>	<b>0.85623</b>	<b>0.86539</b>	<b>v</b>	<b>0.00272</b>	<b>-55.18011</b>	<b>&lt;0.001</b>
<b>gestation length</b>	<b>0.96729</b>	<b>0.96086</b>	<b>0.97377</b>	<b>v</b>	<b>0.00341</b>	<b>-9.76274</b>	<b>&lt;0.001</b>
<b>maternal bleeding</b>	<b>1.22827</b>	<b>1.18097</b>	<b>1.27747</b>	<b>^</b>	<b>0.02004</b>	<b>10.26073</b>	<b>&lt;0.001</b>
fetal oxygen deprivation	1.06453	0.75225	1.50645	.	0.17716	0.35297	0.724
pregnancy oedema	1.10541	0.97994	1.24693	.	0.06147	1.63036	0.103
gestational diabetes	0.97446	0.59625	1.59258	.	0.25063	-0.10321	0.918
<b>gestational hypertension</b>	<b>1.14610</b>	<b>1.08437</b>	<b>1.21134</b>	<b>^</b>	<b>0.02825</b>	<b>4.82759</b>	<b>&lt;0.001</b>
<b>APGAR5 score</b>	<b>0.89374</b>	<b>0.86735</b>	<b>0.92093</b>	<b>v</b>	<b>0.01529</b>	<b>-7.34630</b>	<b>&lt;0.001</b>
<b>sex</b>	<b>0.43447</b>	<b>0.42357</b>	<b>0.44566</b>	<b>v</b>	<b>0.01297</b>	<b>-64.28313</b>	<b>&lt;0.001</b>
<b>birth year cohort</b>	<b>1.32089</b>	<b>1.31173</b>	<b>1.33012</b>	<b>^</b>	<b>0.00355</b>	<b>78.40134</b>	<b>&lt;0.001</b>
<b>birth season</b>	<b>1.01383</b>	<b>1.01041</b>	<b>1.01725</b>	<b>^</b>	<b>0.00172</b>	<b>7.97988</b>	<b>&lt;0.001</b>
<b>country</b>	<b>0.29621</b>	<b>0.27837</b>	<b>0.31520</b>	<b>v</b>	<b>0.03170</b>	<b>-38.38079</b>	<b>&lt;0.001</b>
parity(2nd)	1.00510	0.97816	1.03279	.	0.01386	0.36724	0.713
parity(3rd)	1.02207	0.98213	1.06363	.	0.02034	1.07328	0.283
parity(4+)	0.97226	0.91423	1.03397	.	0.03140	-0.89608	0.370
<b>region Sjælland</b>	<b>0.74552</b>	<b>0.71858</b>	<b>0.77346</b>	<b>v</b>	<b>0.01878</b>	<b>-15.64124</b>	<b>&lt;0.001</b>
<b>region Syddanmark</b>	<b>0.78383</b>	<b>0.75909</b>	<b>0.80938</b>	<b>v</b>	<b>0.01636</b>	<b>-14.88348</b>	<b>&lt;0.001</b>
<b>region Midtjylland</b>	<b>0.87541</b>	<b>0.84868</b>	<b>0.90297</b>	<b>v</b>	<b>0.01582</b>	<b>-8.41207</b>	<b>&lt;0.001</b>
<b>region Nordjylland</b>	<b>0.43912</b>	<b>0.41773</b>	<b>0.46160</b>	<b>v</b>	<b>0.02548</b>	<b>-32.30421</b>	<b>&lt;0.001</b>

Supplementary Material – Figures and Tables

**Table S10.** Risk of schizophrenia by birth weight (a) and length (b).

schizophrenia [DF20]							
(a) birth weight (BW)							
	exp(coef)	LCL	UCL	risk	SE	Z	Pr(Z)
<b>BW group 1</b>	<b>1.35606</b>	<b>1.08041</b>	<b>1.70202</b>	▲	<b>0.11594</b>	<b>2.62706</b>	<b>0.009</b>
<b>BW group 2</b>	<b>1.30665</b>	<b>1.17257</b>	<b>1.45605</b>	▲	<b>0.05524</b>	<b>4.84205</b>	<b>&lt;0.001</b>
BW group 3	1.05014	0.96768	1.13963	.	0.04173	1.17250	0.241
BW group 4	1.00923	0.92112	1.10576	.	0.04661	0.19703	0.844
BW group 5	0.96324	0.83141	1.11597	.	0.07509	-0.49873	0.618
BW group 6	0.97549	0.73537	1.29401	.	0.14417	-0.17215	0.863
<b>maternal disorder</b>	<b>4.66464</b>	<b>3.84049</b>	<b>5.66565</b>	▲	<b>0.09919</b>	<b>15.52568</b>	<b>&lt;0.001</b>
<b>paternal disorder</b>	<b>3.07288</b>	<b>2.44636</b>	<b>3.85985</b>	▲	<b>0.11634</b>	<b>9.64975</b>	<b>&lt;0.001</b>
<b>paternal age</b>	<b>1.72843</b>	<b>1.04172</b>	<b>2.86782</b>	▲	<b>0.25834</b>	<b>2.11817</b>	<b>0.034</b>
<b>maternal age</b>	<b>0.30879</b>	<b>0.16876</b>	<b>0.56501</b>	▼	<b>0.30826</b>	<b>-3.81199</b>	<b>&lt;0.001</b>
preexisting hypertension	0.79189	0.29631	2.11637	.	0.50155	-0.46521	0.642
preexisting diabetes	1.24760	0.74881	2.07865	.	0.26046	0.84935	0.396
<b>previous abortion (induc.)</b>	<b>1.24457</b>	<b>1.15258</b>	<b>1.34390</b>	▲	<b>0.03918</b>	<b>5.58446</b>	<b>&lt;0.001</b>
previous abortion (spont.)	1.03345	0.94532	1.12979	.	0.04548	0.72350	0.469
education level	1.02319	0.99978	1.04715	.	0.01181	1.94151	0.052
<b>average income</b>	<b>0.84589</b>	<b>0.83457</b>	<b>0.85737</b>	▼	<b>0.00688</b>	<b>-24.34005</b>	<b>&lt;0.001</b>
gestation length	0.99602	0.97666	1.01576	.	0.01001	-0.39826	0.690
<b>maternal bleeding</b>	<b>1.25826</b>	<b>1.12577</b>	<b>1.40635</b>	▲	<b>0.05677</b>	<b>4.04680</b>	<b>&lt;0.001</b>
fetal oxygen deprivation	1.32218	0.73019	2.39411	.	0.30293	0.92193	0.357
pregnancy oedema	1.04773	0.81407	1.34847	.	0.12875	0.36218	0.717
gestational diabetes	-	-	-	-	-	-	-
gestational hypertension	1.06820	0.91881	1.24188	.	0.07686	0.85835	0.391
APGAR5 score	1.00746	0.91236	1.11249	.	0.05059	0.14700	0.883
<b>sex</b>	<b>0.79037</b>	<b>0.74073</b>	<b>0.84333</b>	▼	<b>0.03310</b>	<b>-7.10844</b>	<b>&lt;0.001</b>
<b>birth year cohort</b>	<b>1.17967</b>	<b>1.14353</b>	<b>1.21695</b>	▲	<b>0.01587</b>	<b>10.40943</b>	<b>&lt;0.001</b>
birth season	1.00438	0.99495	1.01390	.	0.00481	0.90837	0.364
<b>country</b>	<b>0.74043</b>	<b>0.63508</b>	<b>0.86326</b>	▼	<b>0.07831</b>	<b>-3.83768</b>	<b>&lt;0.001</b>
parity(2nd)	1.00968	0.93520	1.09009	.	0.03910	0.24638	0.805
<b>parity(3rd)</b>	<b>1.14204</b>	<b>1.02168</b>	<b>1.27657</b>	▲	<b>0.05682</b>	<b>2.33753</b>	<b>0.019</b>
<b>parity(4+)</b>	<b>1.20527</b>	<b>1.02196</b>	<b>1.42146</b>	▲	<b>0.08418</b>	<b>2.21799</b>	<b>0.027</b>
<b>region Sjælland</b>	<b>0.64452</b>	<b>0.57941</b>	<b>0.71695</b>	▼	<b>0.05433</b>	<b>-8.08410</b>	<b>&lt;0.001</b>
<b>region Syddanmark</b>	<b>0.82087</b>	<b>0.75297</b>	<b>0.89489</b>	▼	<b>0.04405</b>	<b>-4.48113</b>	<b>&lt;0.001</b>
<b>region Midtjylland</b>	<b>0.69860</b>	<b>0.63837</b>	<b>0.76450</b>	▼	<b>0.04600</b>	<b>-7.79791</b>	<b>&lt;0.001</b>
<b>region Nordjylland</b>	<b>0.54883</b>	<b>0.48469</b>	<b>0.62145</b>	▼	<b>0.06341</b>	<b>-9.46209</b>	<b>&lt;0.001</b>

(b) birth length (BL)

	exp(coef)	LCL	UCL	risk	SE	Z	Pr(Z)
<b>BL group 1</b>	<b>1.45106</b>	<b>1.23507</b>	<b>1.70483</b>	▲	<b>0.08223</b>	<b>4.52749</b>	<b>&lt;0.001</b>
<b>BL group 2</b>	<b>1.30992</b>	<b>1.17407</b>	<b>1.46149</b>	▲	<b>0.05586</b>	<b>4.83248</b>	<b>&lt;0.001</b>
<b>BL group 3</b>	<b>1.09036</b>	<b>1.00307</b>	<b>1.18525</b>	▲	<b>0.04257</b>	<b>2.03198</b>	<b>0.042</b>
BL group 4	1.03936	0.93962	1.14970	.	0.05147	0.75008	0.453
BL group 5	1.00989	0.88664	1.15027	.	0.06641	0.14821	0.882
BL group 6	0.97950	0.77169	1.24327	.	0.12167	-0.17027	0.865

*Supplementary Material – Figures and Tables*

<b>maternal disorder</b>	<b>4.72989</b>	<b>3.89058</b>	<b>5.75028</b>	<b>▲</b>	<b>0.09967</b>	<b>15.59081</b>	<b>&lt;0.001</b>
<b>paternal disorder</b>	<b>3.03313</b>	<b>2.40753</b>	<b>3.82128</b>	<b>▲</b>	<b>0.11786</b>	<b>9.41489</b>	<b>&lt;0.001</b>
<b>paternal age</b>	<b>1.67989</b>	<b>1.00791</b>	<b>2.79987</b>	<b>▲</b>	<b>0.26064</b>	<b>1.99019</b>	<b>0.047</b>
<b>maternal age</b>	<b>0.30939</b>	<b>0.16817</b>	<b>0.56919</b>	<b>▼</b>	<b>0.31104</b>	<b>-3.77182</b>	<b>&lt;0.001</b>
preexisting hypertension	0.82600	0.30905	2.20764	.	0.50158	-0.38111	0.703
preexisting diabetes	1.31473	0.78995	2.18813	.	0.25991	1.05280	0.292
<b>previous abortion (induc.)</b>	<b>1.24499</b>	<b>1.15234</b>	<b>1.34509</b>	<b>▲</b>	<b>0.03946</b>	<b>5.55347</b>	<b>&lt;0.001</b>
previous abortion (spont.)	1.03948	0.95038	1.13693	.	0.04572	0.84692	0.397
education level	1.02324	0.99968	1.04736	.	0.01189	1.93279	0.053
<b>average income</b>	<b>0.84786</b>	<b>0.83643</b>	<b>0.85945</b>	<b>▼</b>	<b>0.00693</b>	<b>-23.82766</b>	<b>&lt;0.001</b>
gestation length	1.00457	0.98437	1.02518	.	0.01036	0.43981	0.660
<b>maternal bleeding</b>	<b>1.26389</b>	<b>1.12946</b>	<b>1.41433</b>	<b>▲</b>	<b>0.05738</b>	<b>4.08183</b>	<b>&lt;0.001</b>
fetal oxygen deprivation	1.22828	0.65909	2.28900	.	0.31761	0.64738	0.517
pregnancy oedema	1.05922	0.82303	1.36318	.	0.12872	0.44693	0.655
gestational diabetes	-	-	-	-	-	-	-
gestational hypertension	1.06762	0.91653	1.24363	.	0.07786	0.84045	0.401
APGAR5 score	1.01944	0.91793	1.13217	.	0.05351	0.35979	0.719
<b>sex</b>	<b>0.78264</b>	<b>0.73279</b>	<b>0.83589</b>	<b>▼</b>	<b>0.03358</b>	<b>-7.29738</b>	<b>&lt;0.001</b>
<b>birth year cohort</b>	<b>1.17860</b>	<b>1.14231</b>	<b>1.21605</b>	<b>▲</b>	<b>0.01596</b>	<b>10.29774</b>	<b>&lt;0.001</b>
birth season	1.00423	0.99473	1.01381	.	0.00485	0.86998	0.384
<b>country</b>	<b>0.75424</b>	<b>0.64653</b>	<b>0.87991</b>	<b>▼</b>	<b>0.07863</b>	<b>-3.58708</b>	<b>&lt;0.001</b>
parity(2nd)	1.00517	0.93068	1.08563	.	0.03929	0.13136	0.895
<b>parity(3rd)</b>	<b>1.15442</b>	<b>1.03252</b>	<b>1.29071</b>	<b>▲</b>	<b>0.05694</b>	<b>2.52205</b>	<b>0.012</b>
<b>parity(4+)</b>	<b>1.22356</b>	<b>1.03704</b>	<b>1.44362</b>	<b>▲</b>	<b>0.08438</b>	<b>2.39100</b>	<b>0.017</b>
<b>region Sjælland</b>	<b>0.64167</b>	<b>0.57619</b>	<b>0.71459</b>	<b>▼</b>	<b>0.05492</b>	<b>-8.07939</b>	<b>&lt;0.001</b>
<b>region Syddanmark</b>	<b>0.82805</b>	<b>0.75900</b>	<b>0.90339</b>	<b>▼</b>	<b>0.04443</b>	<b>-4.24680</b>	<b>&lt;0.001</b>
<b>region Midtjylland</b>	<b>0.69778</b>	<b>0.63714</b>	<b>0.76419</b>	<b>▼</b>	<b>0.04639</b>	<b>-7.75774</b>	<b>&lt;0.001</b>
<b>region Nordjylland</b>	<b>0.55010</b>	<b>0.48544</b>	<b>0.62337</b>	<b>▼</b>	<b>0.06380</b>	<b>-9.36810</b>	<b>&lt;0.001</b>

Supplementary Material – Figures and Tables

**Table S11.** Risk of schizophrenia-schizotypal-delusional disorders by birth weight (a) and length (b).

schizophrenia-schizotypal-delusional disorders [DF20-29]							
(a) birth weight (BW)							
	exp(coef)	LCL	UCL	risk	SE	Z	Pr(Z)
<b>BW group 1</b>	<b>1.56126</b>	<b>1.32727</b>	<b>1.83650</b>	▲	<b>0.08284</b>	<b>5.37756</b>	<b>&lt;0.001</b>
<b>BW group 2</b>	<b>1.23269</b>	<b>1.13290</b>	<b>1.34126</b>	▲	<b>0.04307</b>	<b>4.85703</b>	<b>&lt;0.001</b>
BW group 3	1.05105	0.98766	1.11851	.	0.03174	1.56872	0.117
BW group 4	0.96605	0.90056	1.03631	.	0.03582	-0.96431	0.335
BW group 5	0.96002	0.85904	1.07288	.	0.05671	-0.71950	0.472
BW group 6	0.98936	0.80134	1.22149	.	0.10754	-0.09949	0.921
<b>maternal disorder</b>	<b>3.44242</b>	<b>3.05468</b>	<b>3.87937</b>	▲	<b>0.06097</b>	<b>20.27497</b>	<b>&lt;0.001</b>
<b>paternal disorder</b>	<b>2.48939</b>	<b>2.15829</b>	<b>2.87129</b>	▲	<b>0.07282</b>	<b>12.52466</b>	<b>&lt;0.001</b>
<b>paternal age</b>	<b>1.95571</b>	<b>1.32871</b>	<b>2.87859</b>	▲	<b>0.19722</b>	<b>3.40102</b>	<b>0.001</b>
<b>maternal age</b>	<b>0.33730</b>	<b>0.21246</b>	<b>0.53549</b>	▼	<b>0.23583</b>	<b>-4.60832</b>	<b>&lt;0.001</b>
preexisting hypertension	0.76420	0.36345	1.60685	.	0.37919	-0.70920	0.478
preexisting diabetes	1.22762	0.83295	1.80931	.	0.19790	1.03631	0.300
<b>previous abortion (induc.)</b>	<b>1.23364</b>	<b>1.16374</b>	<b>1.30774</b>	▲	<b>0.02976</b>	<b>7.05525</b>	<b>&lt;0.001</b>
previous abortion (spont.)	1.01475	0.94782	1.08641	.	0.03482	0.42055	0.674
education level	1.01740	0.99950	1.03562	.	0.00906	1.90423	0.057
<b>average income</b>	<b>0.85619</b>	<b>0.84739</b>	<b>0.86509</b>	▼	<b>0.00527</b>	<b>-29.43375</b>	<b>&lt;0.001</b>
gestation length	0.98941	0.97482	1.00422	.	0.00758	-1.40420	0.160
<b>maternal bleeding</b>	<b>1.20674</b>	<b>1.10748</b>	<b>1.31489</b>	▲	<b>0.04379</b>	<b>4.29101</b>	<b>&lt;0.001</b>
fetal oxygen deprivation	1.01815	0.59012	1.75665	.	0.27828	0.06464	0.948
pregnancy oedema	1.05407	0.86420	1.28564	.	0.10133	0.51964	0.603
gestational diabetes	-	-	-	-	-	-	-
gestational hypertension	1.06351	0.94682	1.19459	.	0.05930	1.03837	0.299
APGAR5 score	0.98550	0.91563	1.06071	.	0.03752	-0.38916	0.697
<b>sex</b>	<b>0.83996</b>	<b>0.79952</b>	<b>0.88245</b>	▼	<b>0.02518</b>	<b>-6.92697</b>	<b>&lt;0.001</b>
<b>birth year cohort</b>	<b>1.22701</b>	<b>1.20007</b>	<b>1.25454</b>	▲	<b>0.01132</b>	<b>18.06751</b>	<b>&lt;0.001</b>
birth season	1.00648	0.99925	1.01376	.	0.00368	1.75712	0.079
<b>country</b>	<b>0.62743</b>	<b>0.55592</b>	<b>0.70814</b>	▼	<b>0.06174</b>	<b>-7.54938</b>	<b>&lt;0.001</b>
parity(2nd)	1.01090	0.95360	1.07165	.	0.02977	0.36423	0.716
<b>parity(3rd)</b>	<b>1.14109</b>	<b>1.04839</b>	<b>1.24198</b>	▲	<b>0.04323</b>	<b>3.05315</b>	<b>0.002</b>
<b>parity(4+)</b>	<b>1.14799</b>	<b>1.00985</b>	<b>1.30502</b>	▲	<b>0.06541</b>	<b>2.10985</b>	<b>0.035</b>
<b>region Sjælland</b>	<b>0.64657</b>	<b>0.59809</b>	<b>0.69899</b>	▼	<b>0.03977</b>	<b>-10.96443</b>	<b>&lt;0.001</b>
<b>region Syddanmark</b>	<b>0.71102</b>	<b>0.66568</b>	<b>0.75945</b>	▼	<b>0.03362</b>	<b>-10.14452</b>	<b>&lt;0.001</b>
<b>region Midtjylland</b>	<b>0.58496</b>	<b>0.54553</b>	<b>0.62725</b>	▼	<b>0.03561</b>	<b>-15.05710</b>	<b>&lt;0.001</b>
<b>region Nordjylland</b>	<b>0.48317</b>	<b>0.43899</b>	<b>0.53181</b>	▼	<b>0.04893</b>	<b>-14.86476</b>	<b>&lt;0.001</b>
(b) birth length (BL)							
	exp(coef)	LCL	UCL	risk	SE	Z	Pr(Z)
<b>BL group 1</b>	<b>1.47165</b>	<b>1.30196</b>	<b>1.66346</b>	▲	<b>0.06251</b>	<b>6.18119</b>	<b>&lt;0.001</b>
<b>BL group 2</b>	<b>1.26039</b>	<b>1.15813</b>	<b>1.37167</b>	▲	<b>0.04317</b>	<b>5.36048</b>	<b>&lt;0.001</b>
<b>BL group 3</b>	<b>1.08074</b>	<b>1.01405</b>	<b>1.15183</b>	▲	<b>0.03250</b>	<b>2.38912</b>	<b>0.017</b>
BL group 4	1.02682	0.95085	1.10885	.	0.03922	0.67486	0.500
BL group 5	0.98884	0.89517	1.09231	.	0.05077	-0.22105	0.825

*Supplementary Material – Figures and Tables*

BL group 6	0.99501	0.83193	1.19006	.	0.09133	-0.05481	0.956
<b>maternal disorder</b>	<b>3.44554</b>	<b>3.05377</b>	<b>3.88757</b>	<b>▲</b>	<b>0.06158</b>	<b>20.08757</b>	<b>&lt;0.001</b>
<b>paternal disorder</b>	<b>2.48498</b>	<b>2.15212</b>	<b>2.86933</b>	<b>▲</b>	<b>0.07337</b>	<b>12.40577</b>	<b>&lt;0.001</b>
<b>paternal age</b>	<b>1.89907</b>	<b>1.28563</b>	<b>2.80523</b>	<b>▲</b>	<b>0.19904</b>	<b>3.22222</b>	<b>0.001</b>
<b>maternal age</b>	<b>0.33440</b>	<b>0.20972</b>	<b>0.53319</b>	<b>▼</b>	<b>0.23804</b>	<b>-4.60186</b>	<b>&lt;0.001</b>
preexisting hypertension	0.80623	0.38342	1.69530	.	0.37921	-0.56798	0.570
preexisting diabetes	1.29199	0.87741	1.90245	.	0.19743	1.29757	0.194
<b>previous abortion (induc.)</b>	<b>1.23534</b>	<b>1.16483</b>	<b>1.31011</b>	<b>▲</b>	<b>0.02998</b>	<b>7.04844</b>	<b>&lt;0.001</b>
previous abortion (spont.)	1.02363	0.95575	1.09633	.	0.03501	0.66714	0.505
education level	1.01666	0.99864	1.03500	.	0.00912	1.81049	0.070
<b>average income</b>	<b>0.85663</b>	<b>0.84775</b>	<b>0.86560</b>	<b>▼</b>	<b>0.00532</b>	<b>-29.10475</b>	<b>&lt;0.001</b>
gestation length	0.99625	0.98105	1.01169	.	0.00784	-0.47872	0.632
<b>maternal bleeding</b>	<b>1.21628</b>	<b>1.11527</b>	<b>1.32643</b>	<b>▲</b>	<b>0.04423</b>	<b>4.42646</b>	<b>&lt;0.001</b>
fetal oxygen deprivation	0.96381	0.54638	1.70015	.	0.28958	-0.12728	0.899
pregnancy oedema	1.04089	0.85176	1.27203	.	0.10231	0.39174	0.695
gestational diabetes	-	-	-	-	-	-	-
gestational hypertension	1.04425	0.92729	1.17597	.	0.06061	0.71442	0.475
APGAR5 score	0.99169	0.91758	1.07179	.	0.03963	-0.21053	0.833
<b>sex</b>	<b>0.83337</b>	<b>0.79262</b>	<b>0.87621</b>	<b>▼</b>	<b>0.02558</b>	<b>-7.12699</b>	<b>&lt;0.001</b>
<b>birth year cohort</b>	<b>1.22409</b>	<b>1.19709</b>	<b>1.25171</b>	<b>▲</b>	<b>0.01138</b>	<b>17.76329</b>	<b>&lt;0.001</b>
birth season	1.00652	0.99923	1.01386	.	0.00371	1.75303	0.080
<b>country</b>	<b>0.63206</b>	<b>0.55953</b>	<b>0.71400</b>	<b>▼</b>	<b>0.06219</b>	<b>-7.37681</b>	<b>&lt;0.001</b>
parity(2nd)	1.00600	0.94871	1.06675	.	0.02992	0.19996	0.842
<b>parity(3rd)</b>	<b>1.14593</b>	<b>1.05252</b>	<b>1.24762</b>	<b>▲</b>	<b>0.04338</b>	<b>3.13986</b>	<b>0.002</b>
<b>parity(4+)</b>	<b>1.14843</b>	<b>1.00945</b>	<b>1.30655</b>	<b>▲</b>	<b>0.06581</b>	<b>2.10283</b>	<b>0.035</b>
<b>region Sjælland</b>	<b>0.64728</b>	<b>0.59827</b>	<b>0.70032</b>	<b>▼</b>	<b>0.04018</b>	<b>-10.82647</b>	<b>&lt;0.001</b>
<b>region Syddanmark</b>	<b>0.71664</b>	<b>0.67051</b>	<b>0.76595</b>	<b>▼</b>	<b>0.03395</b>	<b>-9.81466</b>	<b>&lt;0.001</b>
<b>region Midtjylland</b>	<b>0.58593</b>	<b>0.54609</b>	<b>0.62867</b>	<b>▼</b>	<b>0.03592</b>	<b>-14.88123</b>	<b>&lt;0.001</b>
<b>region Nordjylland</b>	<b>0.48353</b>	<b>0.43901</b>	<b>0.53256</b>	<b>▼</b>	<b>0.04928</b>	<b>-14.74501</b>	<b>&lt;0.001</b>

*Supplementary Material – Figures and Tables*

**Table S12.** Risk of schizophrenia-spectrum disorders by birth weight (a) and length (b).

schizophrenia-spectrum disorders (schizophrenia, bipolar, depression) [DF20, DF30, DF31, DF32, DF33]							
(a) birth weight (BW)							
	exp(coef)	LCL	UCL	risk	SE	Z	Pr(Z)
<b>BW group 1</b>	<b>1.24943</b>	<b>1.12968</b>	<b>1.38187</b>	▲	<b>0.05140</b>	<b>4.33200</b>	<b>&lt;0.001</b>
<b>BW group 2</b>	<b>1.20764</b>	<b>1.15154</b>	<b>1.26647</b>	▲	<b>0.02427</b>	<b>7.77373</b>	<b>&lt;0.001</b>
<b>BW group 3</b>	<b>1.08391</b>	<b>1.04705</b>	<b>1.12207</b>	▲	<b>0.01765</b>	<b>4.56437</b>	<b>&lt;0.001</b>
<b>BW group 4</b>	<b>0.94359</b>	<b>0.90681</b>	<b>0.98186</b>	▼	<b>0.02029</b>	<b>-2.86235</b>	<b>0.004</b>
BW group 5	0.94664	0.88884	1.00819	.	0.03214	-1.70613	0.088
BW group 6	0.90459	0.79908	1.02403	.	0.06327	-1.58471	0.113
<b>maternal disorder</b>	<b>2.35992</b>	<b>2.24975</b>	<b>2.47549</b>	▲	<b>0.02439</b>	<b>35.19943</b>	<b>&lt;0.001</b>
<b>paternal disorder</b>	<b>1.96426</b>	<b>1.85311</b>	<b>2.08207</b>	▲	<b>0.02972</b>	<b>22.71652</b>	<b>&lt;0.001</b>
<b>paternal age</b>	<b>1.27718</b>	<b>1.01624</b>	<b>1.60512</b>	▲	<b>0.11661</b>	<b>2.09813</b>	<b>0.036</b>
<b>maternal age</b>	<b>0.39985</b>	<b>0.30498</b>	<b>0.52423</b>	▼	<b>0.13818</b>	<b>-6.63373</b>	<b>&lt;0.001</b>
preexisting hypertension	1.26347	0.91389	1.74676	.	0.16526	1.41511	0.157
preexisting diabetes	1.04632	0.82879	1.32095	.	0.11892	0.38078	0.703
<b>previous abortion (induc.)</b>	<b>1.16833</b>	<b>1.12965</b>	<b>1.20834</b>	▲	<b>0.01718</b>	<b>9.05531</b>	<b>&lt;0.001</b>
<b>previous abortion (spont.)</b>	<b>1.06022</b>	<b>1.02082</b>	<b>1.10114</b>	▲	<b>0.01932</b>	<b>3.02627</b>	<b>0.002</b>
education level	1.00622	0.99605	1.01649	.	0.00518	1.19575	0.232
<b>average income</b>	<b>0.91012</b>	<b>0.90474</b>	<b>0.91554</b>	▼	<b>0.00303</b>	<b>-31.13109</b>	<b>&lt;0.001</b>
<b>gestation length</b>	<b>0.99137</b>	<b>0.98295</b>	<b>0.99986</b>	▼	<b>0.00435</b>	<b>-1.99143</b>	<b>0.046</b>
<b>maternal bleeding</b>	<b>1.18012</b>	<b>1.12320</b>	<b>1.23993</b>	▲	<b>0.02522</b>	<b>6.56595</b>	<b>&lt;0.001</b>
fetal oxygen deprivation	1.07838	0.81871	1.42041	.	0.14056	0.53685	0.591
pregnancy oedema	1.03296	0.92163	1.15774	.	0.05819	0.55728	0.577
gestational diabetes	-	-	-	-	-	-	-
gestational hypertension	1.06549	0.99805	1.13749	.	0.03336	1.90147	0.057
APGAR5 score	0.96367	0.92452	1.00449	.	0.02116	-1.74845	0.080
<b>sex</b>	<b>1.94422</b>	<b>1.88915</b>	<b>2.00088</b>	▲	<b>0.01466</b>	<b>45.35682</b>	<b>&lt;0.001</b>
<b>birth year cohort</b>	<b>1.39167</b>	<b>1.37338</b>	<b>1.41021</b>	▲	<b>0.00675</b>	<b>48.95076</b>	<b>&lt;0.001</b>
<b>birth season</b>	<b>1.01141</b>	<b>1.00731</b>	<b>1.01552</b>	▲	<b>0.00207</b>	<b>5.47649</b>	<b>&lt;0.001</b>
<b>country</b>	<b>0.44582</b>	<b>0.40780</b>	<b>0.48738</b>	▼	<b>0.04548</b>	<b>-17.76383</b>	<b>&lt;0.001</b>
<b>parity(2nd)</b>	<b>1.05043</b>	<b>1.01670</b>	<b>1.08528</b>	▲	<b>0.01665</b>	<b>2.95466</b>	<b>0.003</b>
<b>parity(3rd)</b>	<b>1.13778</b>	<b>1.08435</b>	<b>1.19384</b>	▲	<b>0.02454</b>	<b>5.26009</b>	<b>&lt;0.001</b>
<b>parity(4+)</b>	<b>1.20475</b>	<b>1.11835</b>	<b>1.29782</b>	▲	<b>0.03797</b>	<b>4.90590</b>	<b>&lt;0.001</b>
<b>region Sjælland</b>	<b>0.78106</b>	<b>0.74589</b>	<b>0.81789</b>	▼	<b>0.02351</b>	<b>-10.51106</b>	<b>&lt;0.001</b>
<b>region Syddanmark</b>	<b>0.93073</b>	<b>0.89571</b>	<b>0.96712</b>	▼	<b>0.01957</b>	<b>-3.66822</b>	<b>&lt;0.001</b>
region Midtjylland	0.97794	0.94175	1.01552	.	0.01924	-1.15933	0.246
<b>region Nordjylland</b>	<b>0.59258</b>	<b>0.56043</b>	<b>0.62657</b>	▼	<b>0.02846</b>	<b>-18.38562</b>	<b>&lt;0.001</b>

**(b) birth length (BL)**

	exp(coef)	LCL	UCL	risk	SE	Z	Pr(Z)
<b>BL group 1</b>	<b>1.33509</b>	<b>1.24373</b>	<b>1.43316</b>	▲	<b>0.03617</b>	<b>7.99098</b>	<b>&lt;0.001</b>
<b>BL group 2</b>	<b>1.23563</b>	<b>1.17848</b>	<b>1.29556</b>	▲	<b>0.02416</b>	<b>8.75685</b>	<b>&lt;0.001</b>
<b>BL group 3</b>	<b>1.12218</b>	<b>1.08349</b>	<b>1.16225</b>	▲	<b>0.01790</b>	<b>6.43962</b>	<b>&lt;0.001</b>
<b>BL group 4</b>	<b>0.94278</b>	<b>0.90214</b>	<b>0.98526</b>	▼	<b>0.02248</b>	<b>-2.62056</b>	<b>0.009</b>

*Supplementary Material – Figures and Tables*

<b>BL group 5</b>	<b>0.87522</b>	<b>0.82570</b>	<b>0.92771</b>	<b>∇</b>	<b>0.02972</b>	<b>-4.48509</b>	<b>&lt;0.001</b>
<b>BL group 6</b>	<b>0.82848</b>	<b>0.74299</b>	<b>0.92381</b>	<b>∇</b>	<b>0.05557</b>	<b>-3.38618</b>	<b>0.001</b>
<b>maternal disorder</b>	<b>2.36861</b>	<b>2.25734</b>	<b>2.48537</b>	<b>∧</b>	<b>0.02455</b>	<b>35.12525</b>	<b>&lt;0.001</b>
<b>paternal disorder</b>	<b>1.95523</b>	<b>1.84368</b>	<b>2.07353</b>	<b>∧</b>	<b>0.02997</b>	<b>22.37114</b>	<b>&lt;0.001</b>
<b>paternal age</b>	<b>1.29411</b>	<b>1.02806</b>	<b>1.62902</b>	<b>∧</b>	<b>0.11743</b>	<b>2.19561</b>	<b>0.028</b>
<b>maternal age</b>	<b>0.39086</b>	<b>0.29751</b>	<b>0.51350</b>	<b>∇</b>	<b>0.13924</b>	<b>-6.74682</b>	<b>&lt;0.001</b>
preexisting hypertension	1.28088	0.92239	1.77869	.	0.16752	1.47773	0.139
preexisting diabetes	1.03793	0.81573	1.32065	.	0.12291	0.30287	0.762
<b>previous abortion (induc.)</b>	<b>1.17033</b>	<b>1.13133</b>	<b>1.21068</b>	<b>∧</b>	<b>0.01729</b>	<b>9.09554</b>	<b>&lt;0.001</b>
<b>previous abortion (spont.)</b>	<b>1.06355</b>	<b>1.02377</b>	<b>1.10487</b>	<b>∧</b>	<b>0.01945</b>	<b>3.16801</b>	<b>0.002</b>
education level	1.00642	0.99618	1.01676	.	0.00522	1.22567	0.220
<b>average income</b>	<b>0.91061</b>	<b>0.90519</b>	<b>0.91606</b>	<b>∇</b>	<b>0.00305</b>	<b>-30.74114</b>	<b>&lt;0.001</b>
gestation length	0.99418	0.98548	1.00295	.	0.00448	-1.30312	0.193
<b>maternal bleeding</b>	<b>1.18647</b>	<b>1.12874</b>	<b>1.24716</b>	<b>∧</b>	<b>0.02545</b>	<b>6.71789</b>	<b>&lt;0.001</b>
fetal oxygen deprivation	1.08023	0.81788	1.42674	.	0.14195	0.54369	0.587
pregnancy oedema	1.03596	0.92381	1.16173	.	0.05846	0.60436	0.546
gestational diabetes	-	-	-	-	-	-	-
gestational hypertension	1.06431	0.99607	1.13723	.	0.03381	1.84340	0.065
APGAR5 score	0.97030	0.92887	1.01358	.	0.02227	-1.35397	0.176
<b>sex</b>	<b>1.93203</b>	<b>1.87652</b>	<b>1.98918</b>	<b>∧</b>	<b>0.01487</b>	<b>44.27847</b>	<b>&lt;0.001</b>
<b>birth year cohort</b>	<b>1.39203</b>	<b>1.37363</b>	<b>1.41067</b>	<b>∧</b>	<b>0.00679</b>	<b>48.72564</b>	<b>&lt;0.001</b>
<b>birth season</b>	<b>1.01144</b>	<b>1.00732</b>	<b>1.01559</b>	<b>∧</b>	<b>0.00209</b>	<b>5.45689</b>	<b>&lt;0.001</b>
<b>country</b>	<b>0.44790</b>	<b>0.40946</b>	<b>0.48996</b>	<b>∇</b>	<b>0.04579</b>	<b>-17.54145</b>	<b>&lt;0.001</b>
<b>parity(2nd)</b>	<b>1.05025</b>	<b>1.01641</b>	<b>1.08521</b>	<b>∧</b>	<b>0.01671</b>	<b>2.93440</b>	<b>0.003</b>
<b>parity(3rd)</b>	<b>1.13995</b>	<b>1.08622</b>	<b>1.19634</b>	<b>∧</b>	<b>0.02463</b>	<b>5.31711</b>	<b>&lt;0.001</b>
<b>parity(4+)</b>	<b>1.20723</b>	<b>1.12013</b>	<b>1.30109</b>	<b>∧</b>	<b>0.03820</b>	<b>4.92945</b>	<b>&lt;0.001</b>
<b>region Sjælland</b>	<b>0.78336</b>	<b>0.74778</b>	<b>0.82063</b>	<b>∇</b>	<b>0.02372</b>	<b>-10.29594</b>	<b>&lt;0.001</b>
<b>region Syddanmark</b>	<b>0.93675</b>	<b>0.90117</b>	<b>0.97374</b>	<b>∇</b>	<b>0.01976</b>	<b>-3.30672</b>	<b>0.001</b>
region Midtjylland	0.98254	0.94589	1.02061	.	0.01940	-0.90819	0.364
<b>region Nordjylland</b>	<b>0.59521</b>	<b>0.56274</b>	<b>0.62956</b>	<b>∇</b>	<b>0.02862</b>	<b>-18.12584</b>	<b>&lt;0.001</b>



Supplementary Material – Figures and Tables

**Table S13.** Risk of bipolar disorder by birth weight (a) and length (b).

bipolar disorder [DF30, DF31]							
(a) birth weight (BW)							
	exp(coef)	LCL	UCL	risk	SE	Z	Pr(Z)
BW group 1	1.20767	0.78606	1.85542	.	0.21909	0.86123	0.389
BW group 2	1.03530	0.83736	1.28004	.	0.10827	0.32045	0.749
BW group 3	1.08836	0.94029	1.25975	.	0.07461	1.13484	0.256
BW group 4	1.06123	0.90184	1.24878	.	0.08303	0.71569	0.474
BW group 5	0.94880	0.72446	1.24261	.	0.13764	-0.38183	0.703
BW group 6	0.83638	0.48133	1.45335	.	0.28191	-0.63377	0.526
<b>maternal disorder</b>	<b>9.48643</b>	<b>7.36475</b>	<b>12.21933</b>	<b>▲</b>	<b>0.12916</b>	<b>17.41861</b>	<b>&lt;0.001</b>
<b>paternal disorder</b>	<b>6.85014</b>	<b>4.94602</b>	<b>9.48732</b>	<b>▲</b>	<b>0.16617</b>	<b>11.58015</b>	<b>&lt;0.001</b>
paternal age	1.47414	0.55035	3.94856	.	0.50270	0.77198	0.440
maternal age	1.89272	0.60226	5.94825	.	0.58424	1.09205	0.275
preexisting hypertension	0.62585	0.08770	4.46648	.	1.00269	-0.46739	0.640
preexisting diabetes	1.16102	0.43202	3.12011	.	0.50438	0.29599	0.767
<b>previous abortion (induc.)</b>	<b>1.34394</b>	<b>1.16833</b>	<b>1.54593</b>	<b>▲</b>	<b>0.07144</b>	<b>4.13767</b>	<b>&lt;0.001</b>
previous abortion (spont.)	1.06715	0.90848	1.25352	.	0.08213	0.79131	0.429
<b>education level</b>	<b>1.09384</b>	<b>1.04824</b>	<b>1.14142</b>	<b>▲</b>	<b>0.02173</b>	<b>4.12829</b>	<b>&lt;0.001</b>
<b>average income</b>	<b>0.90669</b>	<b>0.88470</b>	<b>0.92923</b>	<b>▼</b>	<b>0.01253</b>	<b>-7.81915</b>	<b>&lt;0.001</b>
gestation length	0.99519	0.95972	1.03197	.	0.01851	-0.26043	0.795
maternal bleeding	0.95694	0.76051	1.20410	.	0.11722	-0.37549	0.707
fetal oxygen deprivation	0.55093	0.13734	2.21000	.	0.70876	-0.84111	0.400
pregnancy oedema	0.67561	0.39024	1.16966	.	0.28003	-1.40034	0.161
gestational diabetes	-	-	-	-	-	-	-
gestational hypertension	1.05580	0.80148	1.39082	.	0.14061	0.38616	0.699
<b>APGAR5 score</b>	<b>0.81501</b>	<b>0.69674</b>	<b>0.95335</b>	<b>▼</b>	<b>0.07999</b>	<b>-2.55724</b>	<b>0.011</b>
<b>sex</b>	<b>1.70691</b>	<b>1.51535</b>	<b>1.92268</b>	<b>▲</b>	<b>0.06073</b>	<b>8.80369</b>	<b>&lt;0.001</b>
<b>birth year cohort</b>	<b>1.32960</b>	<b>1.24861</b>	<b>1.41584</b>	<b>▲</b>	<b>0.03206</b>	<b>8.88464</b>	<b>&lt;0.001</b>
<b>birth season</b>	<b>1.01858</b>	<b>1.00123</b>	<b>1.03623</b>	<b>▲</b>	<b>0.00877</b>	<b>2.10009</b>	<b>0.036</b>
country	0.84283	0.59497	1.19395	.	0.17768	-0.96233	0.336
<b>parity(2nd)</b>	<b>0.81907</b>	<b>0.71365</b>	<b>0.94007</b>	<b>▼</b>	<b>0.07030</b>	<b>-2.83918</b>	<b>0.005</b>
parity(3rd)	0.86133	0.70330	1.05487	.	0.10342	-1.44346	0.149
parity(4+)	0.80125	0.57695	1.11274	.	0.16756	-1.32241	0.186
<b>region Sjælland</b>	<b>0.80720</b>	<b>0.65327</b>	<b>0.99741</b>	<b>▼</b>	<b>0.10795</b>	<b>-1.98400</b>	<b>0.047</b>
region Syddanmark	1.10859	0.93549	1.31372	.	0.08662	1.19008	0.234
<b>region Midtjylland</b>	<b>1.44911</b>	<b>1.23780</b>	<b>1.69650</b>	<b>▲</b>	<b>0.08042</b>	<b>4.61277</b>	<b>&lt;0.001</b>
region Nordjylland	0.80772	0.64083	1.01809	.	0.11809	-1.80817	0.071

(b) birth length (BL)

	exp(coef)	LCL	UCL	risk	SE	Z	Pr(Z)
BL group 1	0.72636	0.49771	1.06006	.	0.19288	-1.65756	0.097
BL group 2	1.02718	0.83538	1.26303	.	0.10546	0.25431	0.799
BL group 3	1.04043	0.89945	1.20350	.	0.07429	0.53351	0.594
BL group 4	0.88780	0.73857	1.06717	.	0.09389	-1.26754	0.205
BL group 5	0.87448	0.68915	1.10965	.	0.12152	-1.10375	0.270
BL group 6	0.89631	0.58295	1.37811	.	0.21948	-0.49877	0.618

*Supplementary Material – Figures and Tables*

<b>maternal disorder</b>	<b>9.54507</b>	<b>7.39564</b>	<b>12.31921</b>	<b>▲</b>	<b>0.13017</b>	<b>17.33096</b>	<b>&lt;0.001</b>
<b>paternal disorder</b>	<b>6.95512</b>	<b>5.02122</b>	<b>9.63386</b>	<b>▲</b>	<b>0.16623</b>	<b>11.66741</b>	<b>&lt;0.001</b>
paternal age	1.41375	0.52317	3.82034	.	0.50720	0.68266	0.495
maternal age	1.95190	0.61484	6.19664	.	0.58940	1.13472	0.256
preexisting hypertension	0.67096	0.09402	4.78799	.	1.00265	-0.39799	0.691
preexisting diabetes	0.91936	0.29492	2.86591	.	0.58010	-0.14494	0.885
<b>previous abortion (induc.)</b>	<b>1.33797</b>	<b>1.16167</b>	<b>1.54104</b>	<b>▲</b>	<b>0.07209</b>	<b>4.03864</b>	<b>&lt;0.001</b>
previous abortion (spont.)	1.07572	0.91493	1.26478	.	0.08261	0.88362	0.377
<b>education level</b>	<b>1.08828</b>	<b>1.04263</b>	<b>1.13592</b>	<b>▲</b>	<b>0.02186</b>	<b>3.86969</b>	<b>&lt;0.001</b>
<b>average income</b>	<b>0.90615</b>	<b>0.88399</b>	<b>0.92886</b>	<b>▼</b>	<b>0.01263</b>	<b>-7.80376</b>	<b>&lt;0.001</b>
gestation length	1.00413	0.96697	1.04272	.	0.01924	0.21417	0.830
maternal bleeding	0.97058	0.76951	1.22418	.	0.11844	-0.25214	0.801
fetal oxygen deprivation	0.56987	0.14205	2.28617	.	0.70880	-0.79338	0.428
pregnancy oedema	0.68034	0.39300	1.17777	.	0.28000	-1.37559	0.169
gestational diabetes	-	-	-	-	-	-	-
gestational hypertension	1.04456	0.78914	1.38266	.	0.14307	0.30473	0.761
<b>APGAR5 score</b>	<b>0.84023</b>	<b>0.71043</b>	<b>0.99375</b>	<b>▼</b>	<b>0.08562</b>	<b>-2.03317</b>	<b>0.042</b>
<b>sex</b>	<b>1.73305</b>	<b>1.53561</b>	<b>1.95587</b>	<b>▲</b>	<b>0.06171</b>	<b>8.91059</b>	<b>&lt;0.001</b>
<b>birth year cohort</b>	<b>1.33917</b>	<b>1.25675</b>	<b>1.42699</b>	<b>▲</b>	<b>0.03241</b>	<b>9.01136</b>	<b>&lt;0.001</b>
<b>birth season</b>	<b>1.01753</b>	<b>1.00007</b>	<b>1.03530</b>	<b>▲</b>	<b>0.00883</b>	<b>1.96753</b>	<b>0.049</b>
country	0.82513	0.57962	1.17465	.	0.18020	-1.06667	0.286
<b>parity(2nd)</b>	<b>0.80834</b>	<b>0.70375</b>	<b>0.92847</b>	<b>▼</b>	<b>0.07069</b>	<b>-3.00983</b>	<b>0.003</b>
parity(3rd)	0.86105	0.70271	1.05506	.	0.10368	-1.44301	0.149
parity(4+)	0.80678	0.58087	1.12057	.	0.16762	-1.28085	0.200
<b>region Sjælland</b>	<b>0.80625</b>	<b>0.65123</b>	<b>0.99819</b>	<b>▼</b>	<b>0.10895</b>	<b>-1.97662</b>	<b>0.048</b>
region Syddanmark	1.09694	0.92370	1.30267	.	0.08770	1.05500	0.291
<b>region Midtjylland</b>	<b>1.44296</b>	<b>1.23054</b>	<b>1.69206</b>	<b>▲</b>	<b>0.08125</b>	<b>4.51324</b>	<b>&lt;0.001</b>
region Nordjylland	0.81065	0.64255	1.02273	.	0.11857	-1.77043	0.077

Supplementary Material – Figures and Tables

**Table S14.** Risk of major depression by birth weight (a) and length (b).

major depression (unipolar disorder) [DF32, DF33]							
(a) birth weight (BW)							
	exp(coef)	LCL	UCL	risk	SE	Z	Pr(Z)
BW group 1	1.24140	1.11183	1.38607	▲	0.05624	3.84473	<0.001
BW group 2	1.18200	1.12177	1.24546	▲	0.02668	6.26612	<0.001
BW group 3	1.08876	1.04851	1.13055	▲	0.01922	4.42474	<0.001
BW group 4	0.93069	0.89106	0.97209	▼	0.02220	-3.23485	0.001
BW group 5	0.93270	0.87047	0.99938	▼	0.03523	-1.97769	0.048
BW group 6	0.89322	0.77982	1.02312	.	0.06928	-1.62998	0.103
maternal disorder	2.40185	2.27245	2.53862	▲	0.02826	31.01116	<0.001
paternal disorder	2.03765	1.90088	2.18425	▲	0.03545	20.07990	<0.001
paternal age	1.14437	0.88898	1.47314	.	0.12885	1.04664	0.295
maternal age	0.40617	0.30122	0.54769	▼	0.15252	-5.90724	<0.001
preexisting hypertension	1.32498	0.94018	1.86727	.	0.17504	1.60758	0.108
preexisting diabetes	1.04353	0.81003	1.34434	.	0.12924	0.32968	0.742
previous abortion (induc.)	1.15117	1.10936	1.19456	▲	0.01888	7.45825	<0.001
previous abortion (spont.)	1.07686	1.03345	1.12209	▲	0.02099	3.52727	<0.001
education level	1.00364	0.99251	1.01489	.	0.00569	0.63856	0.523
average income	0.91884	0.91289	0.92483	▼	0.00331	-25.53265	<0.001
gestation length	0.99078	0.98156	1.00009	.	0.00477	-1.94182	0.052
maternal bleeding	1.18535	1.12290	1.25128	▲	0.02762	6.15726	<0.001
fetal oxygen deprivation	1.03377	0.76034	1.40552	.	0.15674	0.21187	0.832
pregnancy oedema	1.01883	0.89774	1.15625	.	0.06456	0.28896	0.773
gestational diabetes	-	-	-	-	-	-	-
gestational hypertension	1.06492	0.99132	1.14398	.	0.03654	1.72127	0.085
APGAR5 score	0.95737	0.91509	1.00161	.	0.02305	-1.89035	0.059
sex	2.42623	2.34850	2.50652	▲	0.01661	53.35344	<0.001
birth year cohort	1.43880	1.41802	1.45988	▲	0.00742	49.01064	<0.001
birth season	1.01209	1.00761	1.01659	▲	0.00226	5.30852	<0.001
country	0.35150	0.31501	0.39221	▼	0.05592	-18.69807	<0.001
parity(2nd)	1.06857	1.03116	1.10732	▲	0.01818	3.64808	<0.001
parity(3rd)	1.15674	1.09753	1.21915	▲	0.02681	5.43109	<0.001
parity(4+)	1.21797	1.12188	1.32229	▲	0.04193	4.70281	<0.001
region Sjælland	0.79526	0.75602	0.83652	▼	0.02581	-8.87525	<0.001
region Syddanmark	0.95226	0.91295	0.99325	▼	0.02151	-2.27486	0.023
region Midtjylland	1.03570	0.99400	1.07914	.	0.02096	1.67309	0.094
region Nordjylland	0.58311	0.54812	0.62034	▼	0.03158	-17.08192	<0.001

(b) birth length (BL)

	exp(coef)	LCL	UCL	risk	SE	Z	Pr(Z)
BL group 1	1.34102	1.24138	1.44865	▲	0.03939	7.44950	<0.001
BL group 2	1.22649	1.16459	1.29169	▲	0.02642	7.72611	<0.001
BL group 3	1.13141	1.08903	1.17544	▲	0.01948	6.33871	<0.001
BL group 4	0.92525	0.88159	0.97107	▼	0.02466	-3.15020	0.002
BL group 5	0.84852	0.79569	0.90485	▼	0.03280	-5.00879	<0.001

*Supplementary Material – Figures and Tables*

<b>BL group 6</b>	<b>0.79926</b>	<b>0.70839</b>	<b>0.90178</b>	∇	<b>0.06158</b>	<b>-3.63894</b>	<b>&lt;0.001</b>
<b>maternal disorder</b>	<b>2.41179</b>	<b>2.28111</b>	<b>2.54995</b>	∧	<b>0.02842</b>	<b>30.97498</b>	<b>&lt;0.001</b>
<b>paternal disorder</b>	<b>2.03294</b>	<b>1.89555</b>	<b>2.18028</b>	∧	<b>0.03570</b>	<b>19.87298</b>	<b>&lt;0.001</b>
paternal age	1.17331	0.90998	1.51285	.	0.12968	1.23250	0.218
<b>maternal age</b>	<b>0.39404</b>	<b>0.29160</b>	<b>0.53247</b>	∇	<b>0.15361</b>	<b>-6.06279</b>	<b>&lt;0.001</b>
preexisting hypertension	1.33347	0.94124	1.88916	.	0.17773	1.61922	0.105
preexisting diabetes	1.02347	0.78638	1.33205	.	0.13445	0.17255	0.863
<b>previous abortion (induc.)</b>	<b>1.15357</b>	<b>1.11142</b>	<b>1.19732</b>	∧	<b>0.01899</b>	<b>7.52203</b>	<b>&lt;0.001</b>
<b>previous abortion (spont.)</b>	<b>1.07869</b>	<b>1.03492</b>	<b>1.12431</b>	∧	<b>0.02113</b>	<b>3.58429</b>	<b>&lt;0.001</b>
education level	1.00440	0.99319	1.01573	.	0.00573	0.76633	0.443
<b>average income</b>	<b>0.91899</b>	<b>0.91300</b>	<b>0.92502</b>	∇	<b>0.00334</b>	<b>-25.31536</b>	<b>&lt;0.001</b>
gestation length	0.99232	0.98282	1.00190	.	0.00491	-1.57227	0.116
<b>maternal bleeding</b>	<b>1.19070</b>	<b>1.12742</b>	<b>1.25753</b>	∧	<b>0.02786</b>	<b>6.26473</b>	<b>&lt;0.001</b>
fetal oxygen deprivation	1.05468	0.77572	1.43396	.	0.15674	0.33965	0.734
pregnancy oedema	1.01999	0.89810	1.15843	.	0.06493	0.30486	0.760
gestational diabetes	-	-	-	-	-	-	-
gestational hypertension	1.06645	0.99189	1.14662	.	0.03698	1.73968	0.082
APGAR5 score	0.96333	0.91869	1.01013	.	0.02421	-1.54340	0.123
<b>sex</b>	<b>2.40929</b>	<b>2.33104</b>	<b>2.49017</b>	∧	<b>0.01685</b>	<b>52.19839</b>	<b>&lt;0.001</b>
<b>birth year cohort</b>	<b>1.43907</b>	<b>1.41818</b>	<b>1.46027</b>	∧	<b>0.00746</b>	<b>48.79090</b>	<b>&lt;0.001</b>
<b>birth season</b>	<b>1.01221</b>	<b>1.00770</b>	<b>1.01674</b>	∧	<b>0.00228</b>	<b>5.32642</b>	<b>&lt;0.001</b>
<b>country</b>	<b>0.35236</b>	<b>0.31553</b>	<b>0.39349</b>	∇	<b>0.05633</b>	<b>-18.51790</b>	<b>&lt;0.001</b>
<b>parity(2nd)</b>	<b>1.06932</b>	<b>1.03179</b>	<b>1.10822</b>	∧	<b>0.01823</b>	<b>3.67632</b>	<b>&lt;0.001</b>
<b>parity(3rd)</b>	<b>1.15750</b>	<b>1.09801</b>	<b>1.22021</b>	∧	<b>0.02692</b>	<b>5.43351</b>	<b>&lt;0.001</b>
<b>parity(4+)</b>	<b>1.21766</b>	<b>1.12095</b>	<b>1.32272</b>	∧	<b>0.04222</b>	<b>4.66419</b>	<b>&lt;0.001</b>
<b>region Sjælland</b>	<b>0.79851</b>	<b>0.75879</b>	<b>0.84030</b>	∇	<b>0.02603</b>	<b>-8.64404</b>	<b>&lt;0.001</b>
region Syddanmark	0.95896	0.91900	1.00065	.	0.02171	-1.93014	0.054
region Midtjylland	1.04227	0.99999	1.08635	.	0.02113	1.95931	0.050
<b>region Nordjylland</b>	<b>0.58539</b>	<b>0.55005</b>	<b>0.62300</b>	∇	<b>0.03177</b>	<b>-16.85436</b>	<b>&lt;0.001</b>