

Supplementary Material

Structural and biochemical studies of actin in complex with synthetic macrolides-tail analogs

Jose H. Pereira^a, Chutima Petchprayoon^b, Alexander C. Hoepker^b, Nigel Moriarty^a, Sarah J. Fink^c, Giuseppe Cecere^c, Ian Paterson^c, Paul D. Adams^{a,b} and Gerard Marriott^{a,b,*}

^a Physical Biosciences Division, Lawrence Berkeley National Laboratory, Berkeley, CA 94720, USA

^b Department of Bioengineering, University of California Berkeley, CA 94720, US

^c University Chemical Laboratory, Lensfield Road, Cambridge CB2 1EW, UK.

*Correspondence: marriott1@berkeley.edu

INDEX

Fig S1: Emission spectra of Prodan-G-actin as a function of [Analog 1]

Fig S2: Emission spectra of Prodan-G-actin as a function of [Analog 2]

Fig S3: Emission spectra of Prodan-G-actin as a function of [KabC]

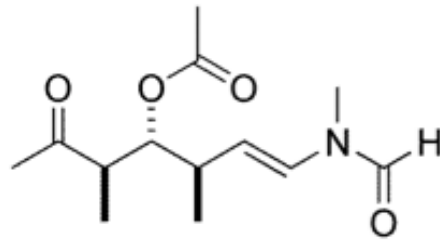
Fig S4: Emission spectra of Prodan-G-actin in the presence of DMF

Fig S5: Emission spectra of Prodan-G-actin as a function of [SF-01] and titration data

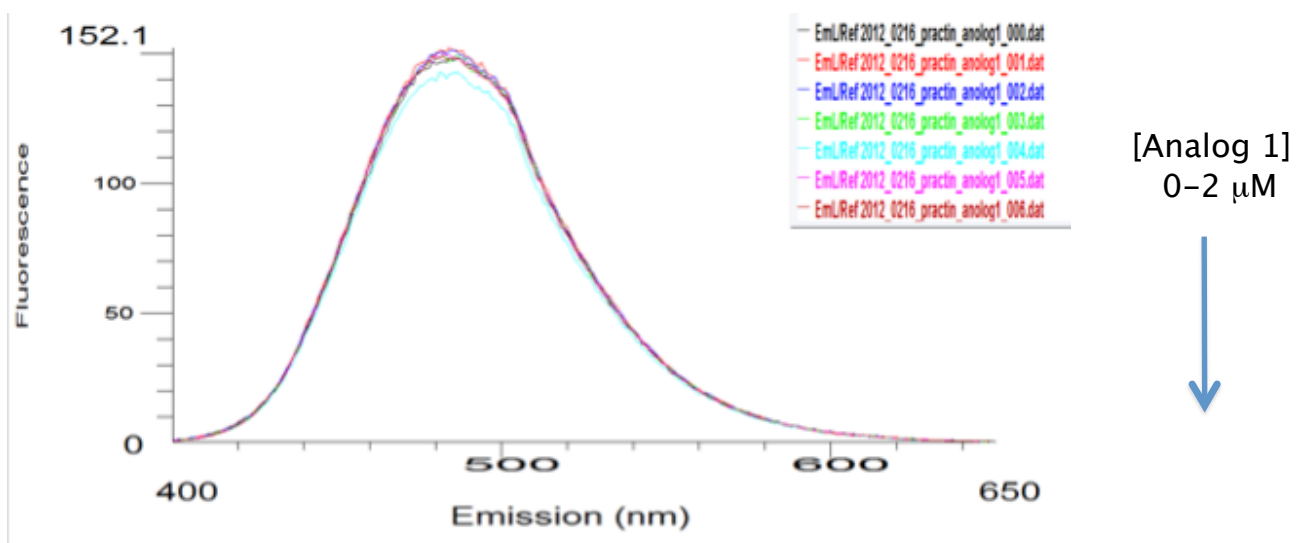
Fig S6: Emission spectra of Prodan-G-actin as a function of [SF-01] and and titration data

Supplementary Figure S1

Structure of Analog 1

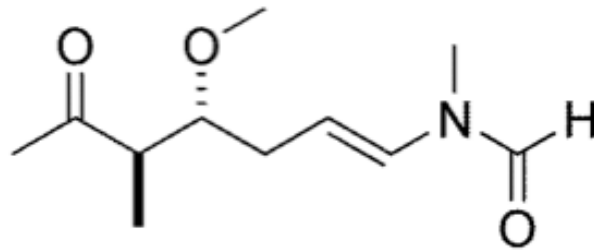


Stoichiometric binding study of Analog 1 (0-2 μM) to Prodan-G-actin (1 μM)

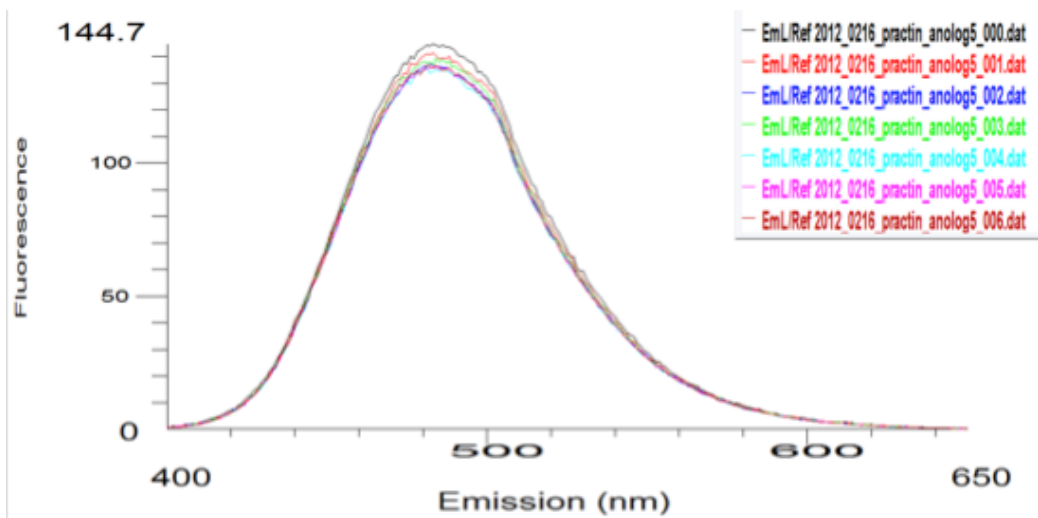


Supplementary Figure S2

Structure of Analog 2



Stoichiometric binding study of Analog 2 (0-2 μM) to Prodan-G-actin (1 μM)

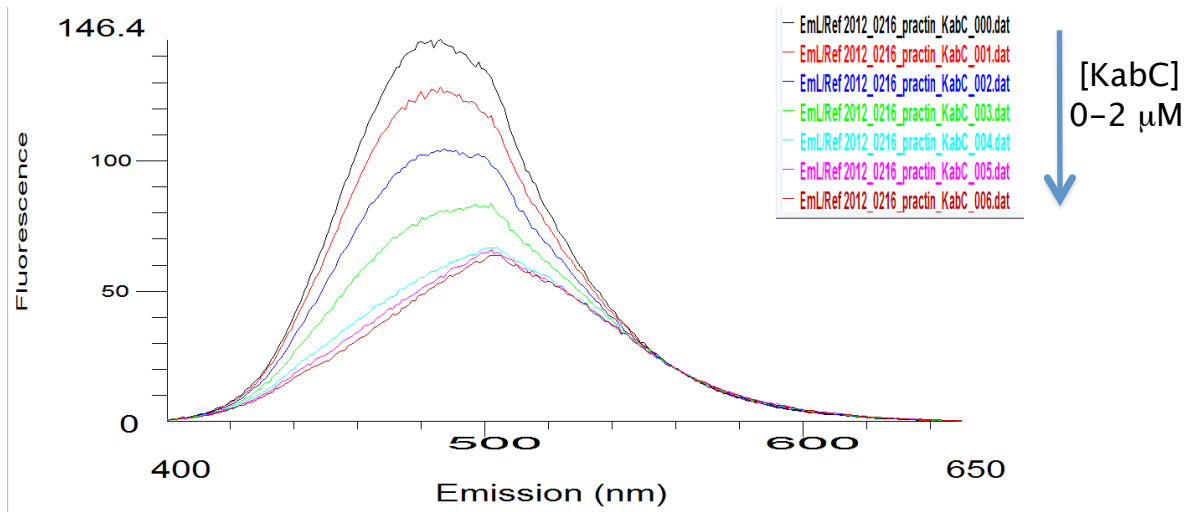


[Analog 2]
0-2 μM



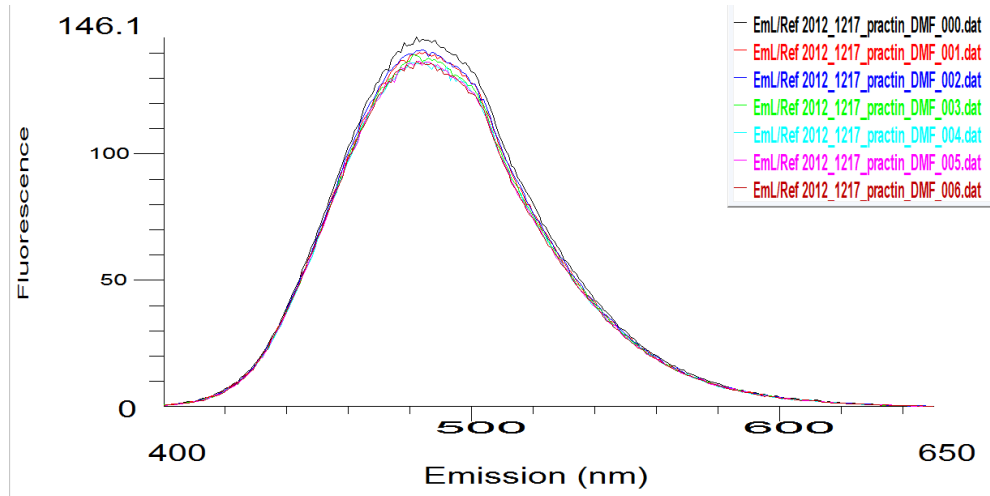
Supplementary Figure S3

Stoichiometric binding study of KabC (0-2 μM) to Prodan-G-actin (1 μM)



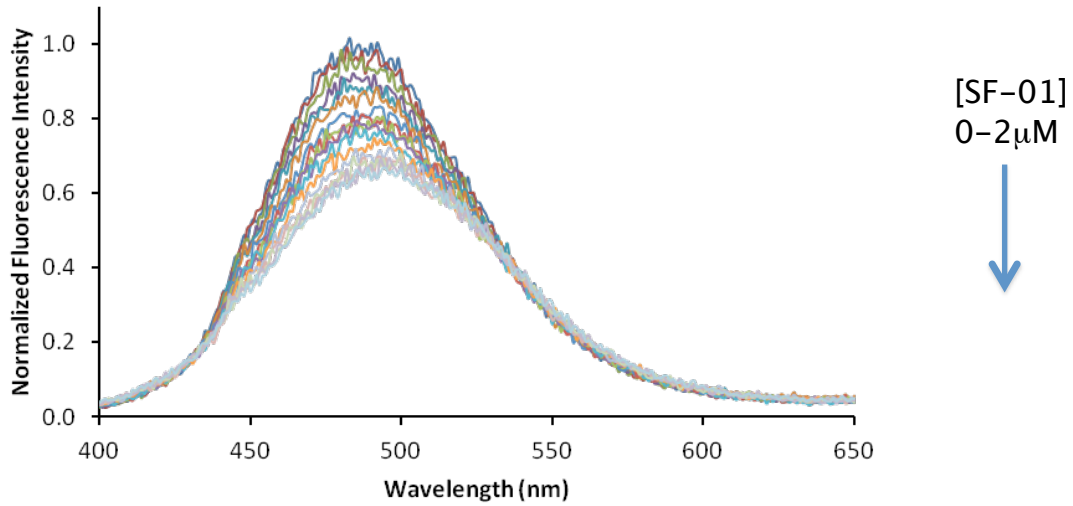
Supplementary Figure S4

Effect of DMF (solvent) on the emission of 1 μ M Prodan-G-actin



Supplementary Figure S5

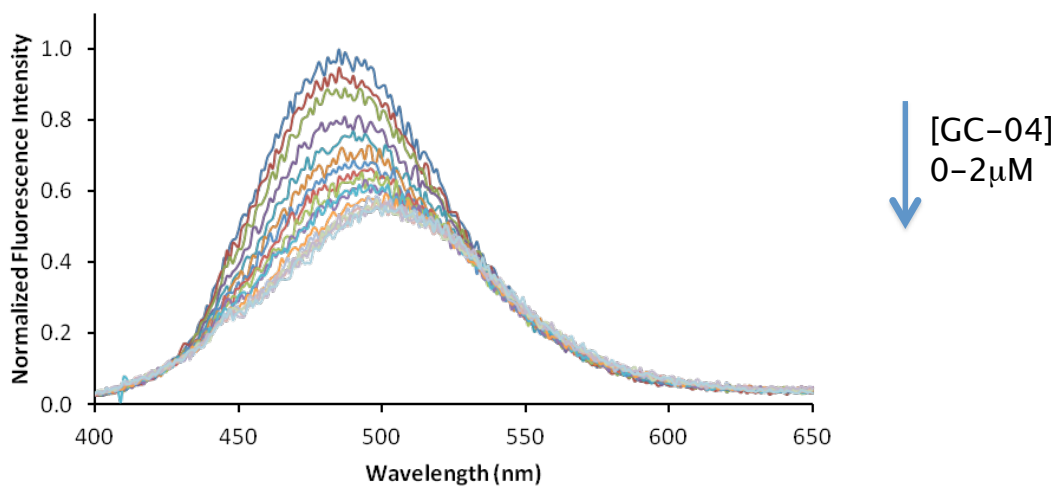
Equilibrium binding of SF-01 to 200 nM Prodan-G-actin



[SF-01]	nM	SF-01 Integrated Intensity
0		89.76062146
20		88.36692392
50		87.05339746
100		84.67808965
150		83.867188
200		82.08230519
250		79.22343035
300		77.45858019
350		77.03021842
400		76.67993842
500		75.269298
750		74.08762135
1000		72.89847692
1250		71.09848738
1500		71.59781923
1750		71.12894454
2000		70.87114654

Supplementary Figure S6

Equilibrium binding of GC-04 to 200 nM Prodan-G-actin



Titration results

[GC-04] nM	GC-04 Integrated Intensity
0	86.7963132
20	82.90088825
50	80.42456299
100	75.21810251
150	71.67034331
200	68.76176046
250	66.83001179
300	65.40357132
350	64.17317011
400	62.26618536
500	62.07579096
750	60.40362045
1000	59.62705922
1250	59.31448987
1500	59.42065636
1750	59.77825469
2000	59.37938099