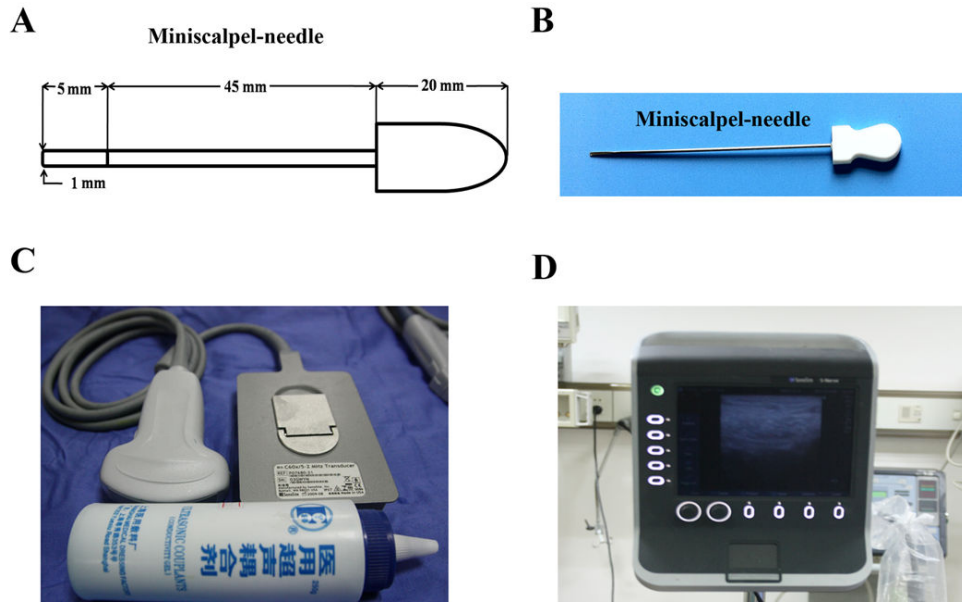


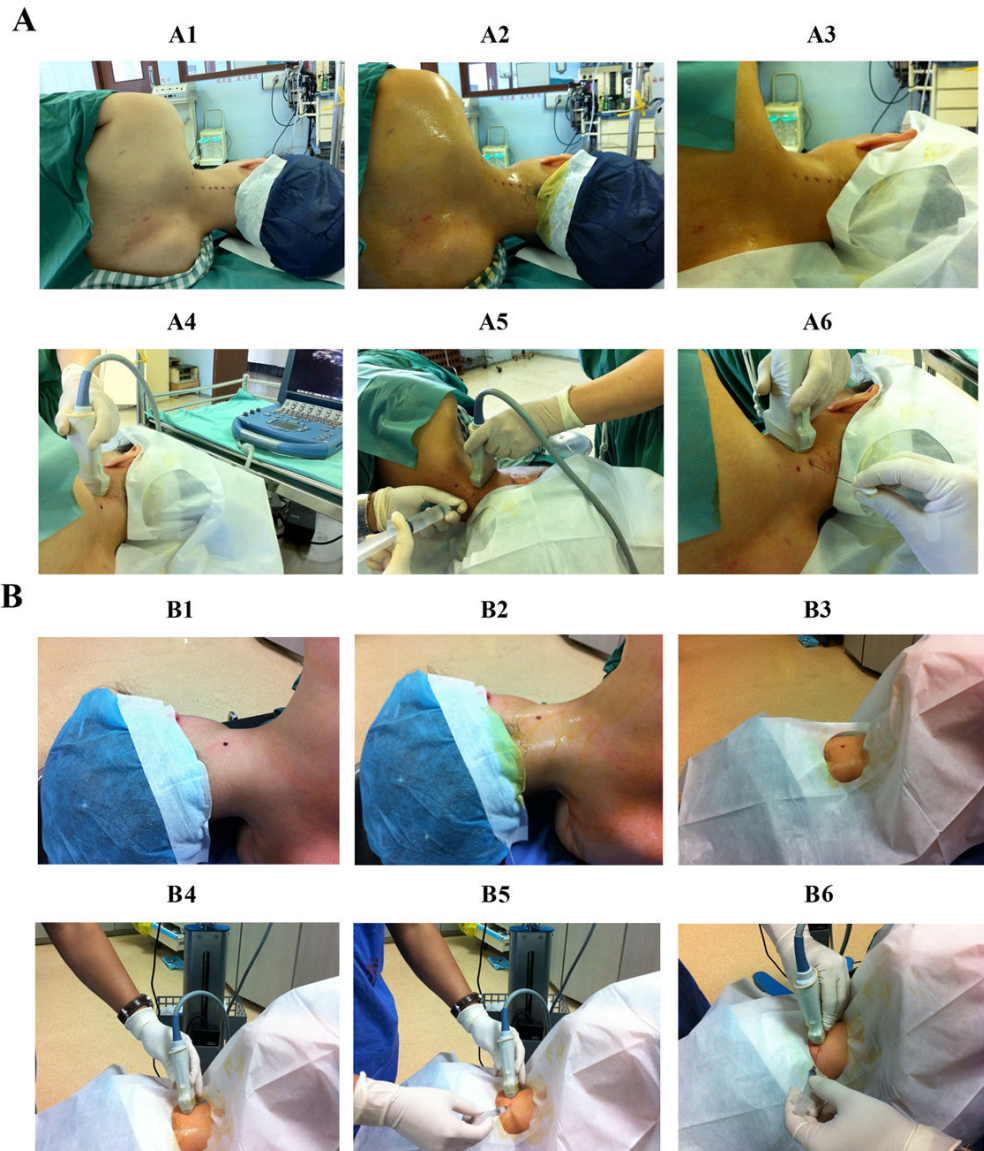
Supplementary figures

Supplementary Figure 1. The equipment used to treat chronic neck pain.



- A. A schematic diagram of a miniscalpel-needle (MSN). B. A photograph of a MSN.
- C. The high-frequency linear array transducer (upper) and disposal sterilizing medical ultrasonic coupling agent (subjaent). D. Ultrasound device.

Supplementary Figure 2. The procedure of UG-MSN release (A) and UG-DN (B).



A. The procedure of UG-MSN release. A1. Trigger points were identified by palpation and marked with indelible ink. A2. The skin was sterilized by povidone iodine. A3. A sterile surgical towel was placed on the patient. A4. The trigger points were determined by ultrasound. A5. Intradermal anesthesia was performed on the trigger points. A6. UG-MSN release was performed on the trigger points. B. The procedure of UG-DN. B1. Trigger points were identified by palpation and marked

with indelible ink. B2. The skin was sterilized by povidone iodine. B3. A sterile surgical towel was placed on the patient. B4. The trigger points were determined by ultrasound. B5. Intradermal anesthesia was performed on the trigger points. B6. UG-DN was performed on the trigger points.