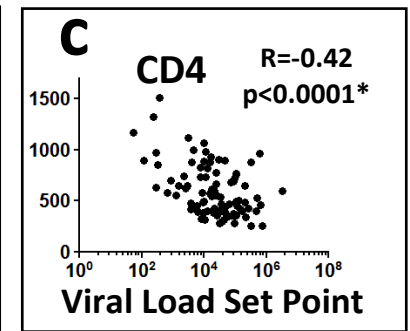
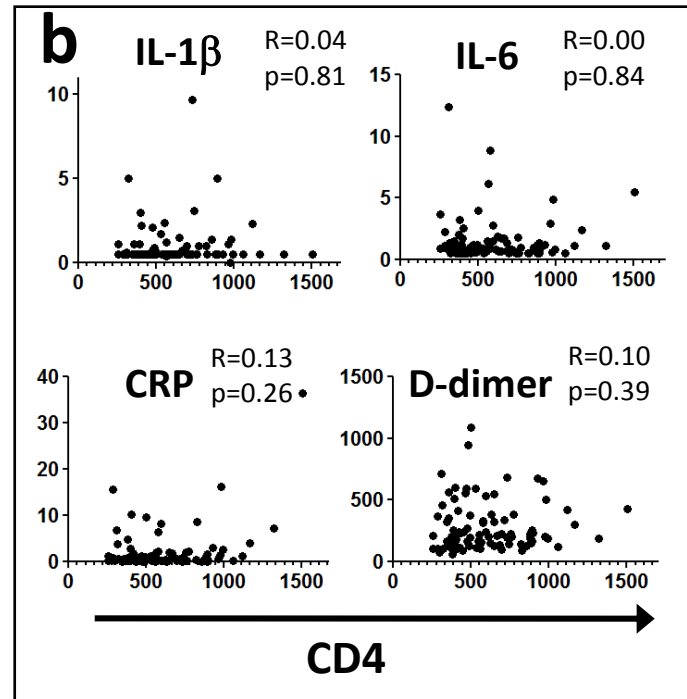
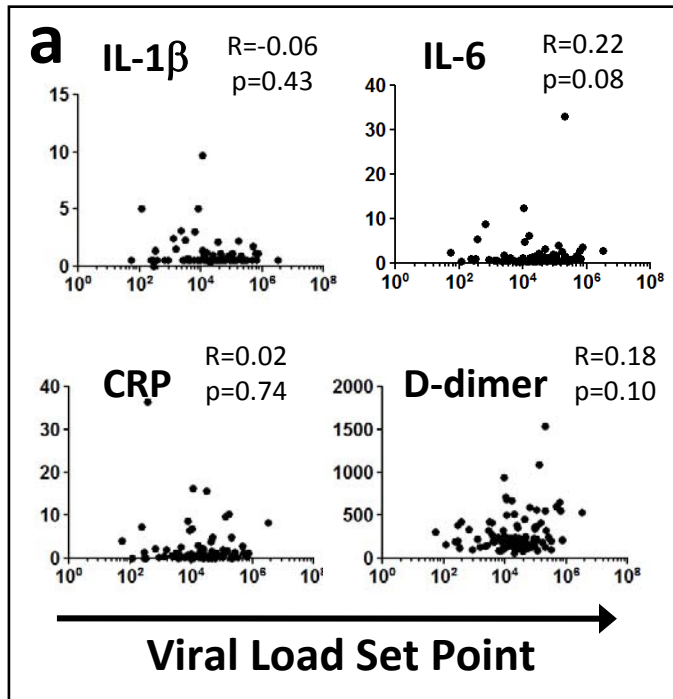


Supplemental Figure 1. No Association of IL-1 β , IL-6, CRP, and D-dimer with Viral Load Set Point, CD4⁺ T-cell count, or Early HIV-1 Disease Progression. IL-1 β , IL-6, CRP, and D-dimer were tested in study subjects and compared to the (a) viral load set point and (b) CD4⁺ T-cell count at the time of testing using Spearman-rank analysis. Viral load set point was significantly correlated with (c) CD4⁺ T-cell count at the time of inflammatory protein testing. Nominal unadjusted two-sided p-values are presented. The following units were used for each test: pg/mL (IL-1 β , IL-6), ng/mL (D-dimer), μ g/mL (CRP), cells/mm³ (CD4⁺ T-cell count), and copies/mL (viral load set point). Subjects were categorized into high or low groups based on separation by the mean value. Log rank analysis was used to determine time-to-endpoint for (d) days from testing to CD4⁺ T-cell count <500 cell/mm³ and (e) days from testing to initiation of ART.



Supplemental Figure 1

