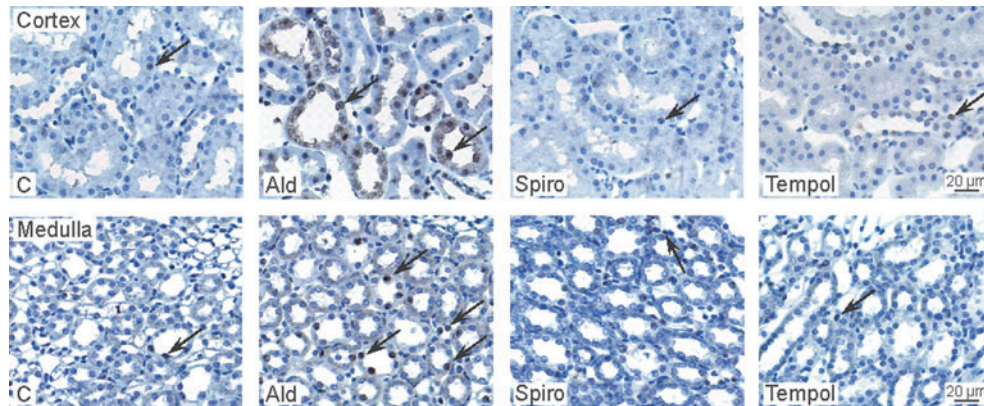


## Supplementary Data



**SUPPLEMENTARY FIG. S1. Aldosterone-induced Nrf2 activation *in vivo* depends on the mineralocorticoid receptor and oxidative stress.** Immunohistochemical staining on paraffin-embedded kidney cortex and medulla sections for Nrf2 activation. Representative images of kidney cortex sections and kidney medulla sections from animals of the control, Ald, Ald/spironolactone, and the Ald/tempol groups. *Arrows* show examples for Nrf2-positive nuclei. Nrf2, nuclear factor-erythroid-2-related factor 2.