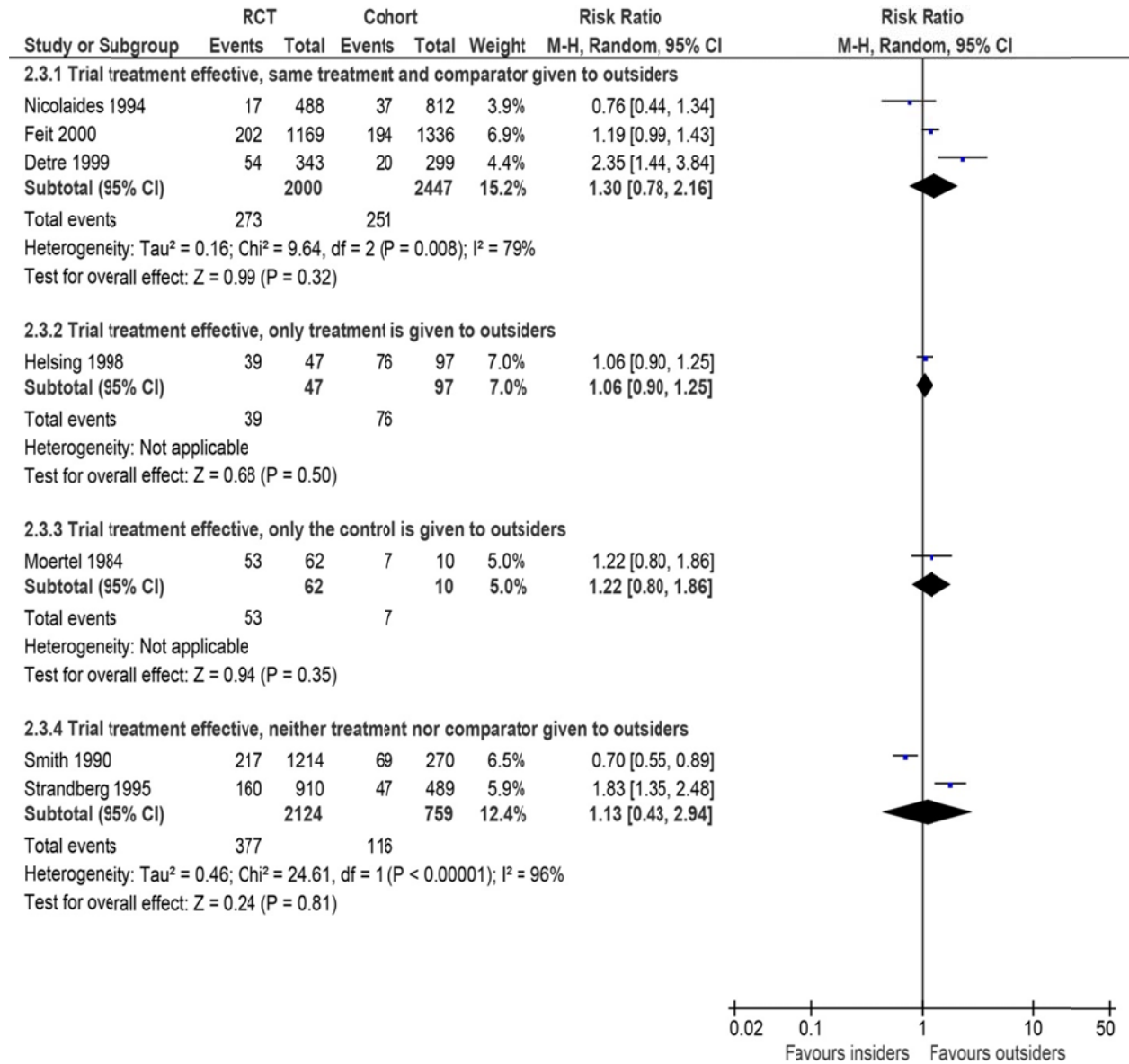


Appendix 2 (as supplied by the authors): Meta-analyses for randomized controlled trials (RCTs) with mortality as an outcome, without randomization of potential participants as “insiders” (participating in the RCT) v. “outsiders” (not participating in the RCT); subgroups are based on effectiveness of trial treatment. Values less than 1.0 indicate that being an “insider” is favoured. CASS = Coronary Artery Surgery Study, CI = confidence interval. For reference details, see the reference list in the main article.



Appendix 2 (continued)

