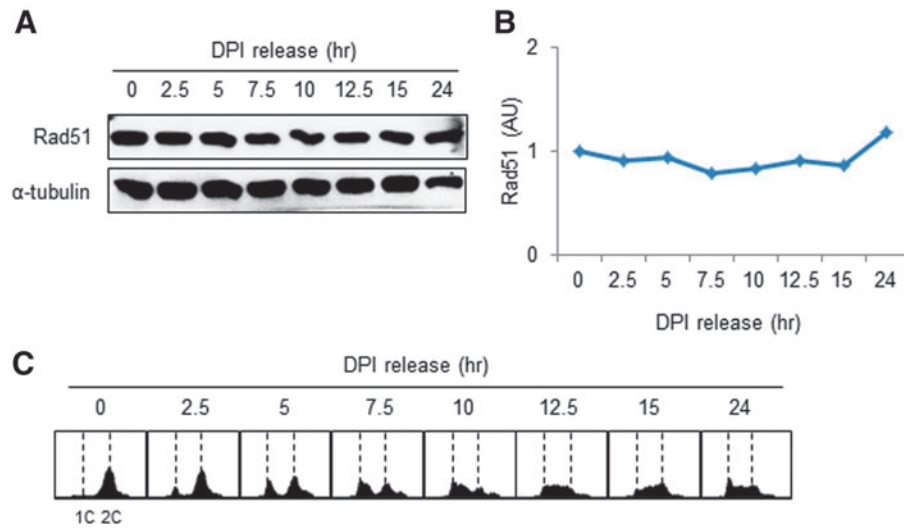


Supplementary Data



SUPPLEMENTARY FIG. S1. Expression of Rad51 protein during the cell cycle in mESCs. **(A)** DPI-treated mESCs were grown synchronously from G2 phase and released. Rad51 expression was confirmed by immunoblot analysis. **(B)** The level of Rad51 protein was quantified using Quantity One software (Bio-Rad). **(C)** The fluorescence-activated cell sorting (FACS) profile indicated that cell populations containing 4N DNA progressed through the G2 phase of the cell cycle.