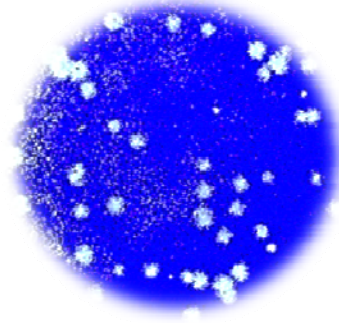
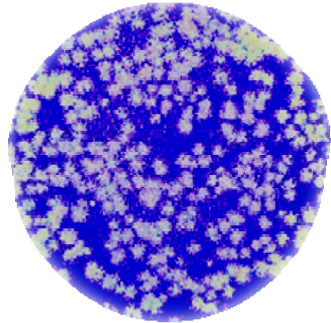
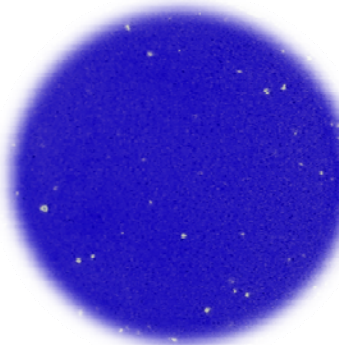
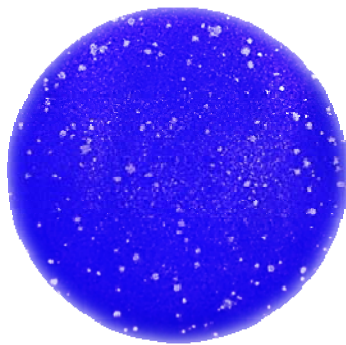


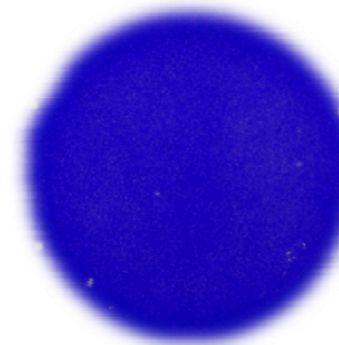
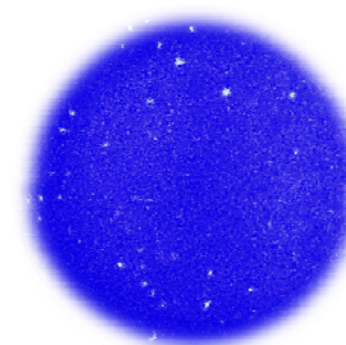
A. En/W149(H5N1)



B. MDk/W401(H5N1)



C. MDk/W452(H5N8)



Supplementary Figure S2 Virus plaque formation in MDCK cells. Monolayers of MDCK cells were infected with 10-fold serial dilutions of En/W149(H5N1) **(A)**, MDk/W401(H5N1) **(B)**, or MDk/W452(H5N8) **(C)** virus in six-well plates. Plaques formed in the presence (left panels) or absence (right panels) of exogenous protease (TPCK-treated trypsin) were visualized by fixation and staining at 48 hpi [En/W149(H5N1)] or 72 hpi [MDk/W452(H5N8), MDk/W401(H5N1)].