

Batch 1

	Sample#	ID#/DOD
C57Bl6 p53+/+ Female 3 months (liver)	1	10690 (1/7/10)
129Sv ^{SL} p53+/+ Male 3 months (liver)	2	10295 (2/12/10)
C57Bl6/129Sv ^{SL} p53+/+ embryo (17.5 embryo)	3	pup 10 (1/7/2010)
C57Bl6/129Sv ^{SL} p53+/+ embryo (17.5 embryo)	4	pup 11 (1/7/2010)
C57Bl6/129Sv ^{SL} p53+/+ embryo (17.5 embryo)	5	pup 12 (1/7/2010)
C57Bl6/129Sv ^{SL} p53+/+ embryo (17.5 embryo)	6	pup 13 (1/7/2010)
C57Bl6/129Sv ^{SL} p53+/+ embryo (17.5 embryo)	7	pup 14 (1/7/2010)
C57Bl6/129Sv ^{SL} p53+/+ embryo (17.5 embryo)	8	pup 15 (1/7/2010)
C57Bl6/129Sv ^{SL} p53+/+ embryo (17.5 embryo)	9	pup 16 (1/7/2010)
C57Bl6/129Sv ^{SL} p53+/+ embryo (17.5 embryo)	10	pup 17 (1/7/2010)
C57Bl6 p53+/+ Female 9 months (liver)	11	10000 (1/24/10)
129Sv ^{SL} p53+/+ Male 3 months (liver)	12	11043 (1/24/10)
C57Bl6/129Sv ^{SL} p53+/+ embryo (17.5 embryo)	13	pup 28 (1/24/10)
C57Bl6/129Sv ^{SL} p53+/+ embryo (17.5 embryo)	14	pup 29 (1/24/10)
C57Bl6/129Sv ^{SL} p53+/+ embryo (17.5 embryo)	15	pup 30 (1/24/10)
C57Bl6/129Sv ^{SL} p53+/+ embryo (17.5 embryo)	16	pup 31 (1/24/10)
C57Bl6 p53+/+ Female 12 months (liver)	17	10010 (5/13/10)
129Sv ^{SL} p53+/+ Male 3 months (liver)	18	12086 (5/13/10)
C57Bl6/129Sv ^{SL} p53+/+ embryo (17.5 embryo)	19	pup 186 (5/13/10)
C57Bl6/129Sv ^{SL} p53+/+ embryo (17.5 embryo)	20	pup 187 (5/13/10)
C57Bl6/129Sv ^{SL} p53+/+ embryo (17.5 embryo)	21	pup 188 (5/13/10)
C57Bl6/129Sv ^{SL} p53+/+ embryo (17.5 embryo)	22	pup 189 (5/13/10)
C57Bl6/129Sv ^{SL} p53+/+ embryo (17.5 embryo)	23	pup 190 (5/13/10)
C57Bl6 p53+/- Female 3 months (liver)	24	12168 (4/19/10)
129Sv ^{SL} p53+/+ Male 3 months (liver)	25	11862 (4/25/10)
C57Bl6/129Sv ^{SL} p53+/+ORp53+/- embryo (17.5 embryo)	26	pup 110 (4/19/10)
C57Bl6/129Sv ^{SL} p53+/+ORp53+/- embryo (17.5 embryo)	27	pup 111 (4/19/10)
C57Bl6/129Sv ^{SL} p53+/+ORp53+/- embryo (17.5 embryo)	28	pup 112 (4/19/10)
C57Bl6/129Sv ^{SL} p53+/+ORp53+/- embryo (17.5 embryo)	29	pup 113 (4/19/10)
C57Bl6/129Sv ^{SL} p53+/+ORp53+/- embryo (17.5 embryo)	30	pup 114 (4/19/10)
C57Bl6 p53+/- Female 9 months (liver)	31	10700 (7/8/10)
129Sv ^{SL} p53+/+ Male 3 months (liver)	32	13161 (7/8/10)
C57Bl6/129Sv ^{SL} p53+/+ORp53+/- embryo (17.5 embryo)	33	pup 307 (7/8/10)
C57Bl6/129Sv ^{SL} p53+/+ORp53+/- embryo (17.5 embryo)	34	pup 308 (7/8/10)
C57Bl6 p53+/- Female 12 months (liver)	35	10699 (10/15/10)
129Sv ^{SL} p53+/+ Male 3 months (liver)	36	13978 (10/15/10)

C57Bl6/129Sv ^{SL} p53+/+ORp53+/- embryo (17.5 embryo)	37	10699-E1 (10/15/10)
C57Bl6/129Sv ^{SL} p53+/+ORp53+/- embryo (17.5 embryo)	38	10699-E2 (10/15/10)
C57Bl6 p53-/- Female 3 months (liver)	39	13175 (6/19/10)
129Sv ^{SL} p53+/+ Male 3 months (liver)	40	13021 (6/19/10)
C57Bl6/129Sv ^{SL} p53+/- embryo (17.5 embryo)	41	pup 234 (6/19/10)
C57Bl6/129Sv ^{SL} p53+/- embryo (17.5 embryo)	42	pup 235 (6/19/10)
C57Bl6/129Sv ^{SL} p53+/- embryo (17.5 embryo)	43	pup 236 (6/19/10)
C57Bl6/129Sv ^{SL} p53+/- embryo (17.5 embryo)	44	pup 237 (6/19/10)
C57Bl6/129Sv ^{SL} p53+/- embryo (17.5 embryo)	45	pup 238 (6/19/10)

Batch 2

	Sample#	ID#/DOD
C57Bl6 p53+/+ Male 3 months (liver)	1	14741 (1/3/11)
129Sv ^{SL} p53+/+ Female 3 months (liver)	2	14905 (1/3/11)
C57Bl6/129Sv ^{SL} p53+/+ embryo (17.5 embryo)	3	14905-E1 (1/3/11)
C57Bl6/129Sv ^{SL} p53+/+ embryo (17.5 embryo)	4	14905-E2 (1/3/11)
C57Bl6/129Sv ^{SL} p53+/+ embryo (17.5 embryo)	5	14905-E3 (1/3/11)
C57Bl6/129Sv ^{SL} p53+/+ embryo (17.5 embryo)	6	14905-E4 (1/3/11)

C57Bl6 p53+/+ Male 9 months (liver)	7	10985 (7/27/10)
129Sv ^{SL} p53+/+ Female 3 months (liver)	8	13382 (7/27/10)
C57Bl6/129Sv ^{SL} p53+/+ embryo (17.5 embryo)	9	pup 314 (7/27/10)
C57Bl6/129Sv ^{SL} p53+/+ embryo (17.5 embryo)	10	pup 315 (7/27/10)
C57Bl6/129Sv ^{SL} p53+/+ embryo (17.5 embryo)	11	pup 316 (7/27/10)
C57Bl6/129Sv ^{SL} p53+/+ embryo (17.5 embryo)	12	pup 317 (7/27/10)
C57Bl6/129Sv ^{SL} p53+/+ embryo (17.5 embryo)	13	pup 318 (7/27/10)
C57Bl6/129Sv ^{SL} p53+/+ embryo (17.5 embryo)	14	pup 319 (7/27/10)
C57Bl6/129Sv ^{SL} p53+/+ embryo (17.5 embryo)	15	pup 320 (7/27/10)
C57Bl6/129Sv ^{SL} p53+/+ embryo (17.5 embryo)	16	pup 321 (7/27/10)

C57Bl6 p53+/+ Male 12 months (liver)	17	12128 (1/31/11)
129Sv ^{SL} p53+/+ Female 3 months (liver)	18	14845 (1/31/11)
C57Bl6/129Sv ^{SL} p53+/+ embryo (17.5 embryo)	19	14845-E1 (1/31/11)
C57Bl6/129Sv ^{SL} p53+/+ embryo (17.5 embryo)	20	14845-E2 (1/31/11)
C57Bl6/129Sv ^{SL} p53+/+ embryo (17.5 embryo)	21	14845-E3 (1/31/11)
C57Bl6/129Sv ^{SL} p53+/+ embryo (17.5 embryo)	22	14845-E4 (1/31/11)
C57Bl6/129Sv ^{SL} p53+/+ embryo (17.5 embryo)	23	14845-E5 (1/31/11)
C57Bl6/129Sv ^{SL} p53+/+ embryo (17.5 embryo)	24	14845-E6 (1/31/11)
C57Bl6/129Sv ^{SL} p53+/+ embryo (17.5 embryo)	25	14845-E7 (1/31/11)

C57Bl6 p53+/- Male 3 months (liver)	26	12456 (5/2/10)
129Sv ^{SL} p53+/+ Female 3 months (liver)	27	12616 (5/2/10)
C57Bl6/129Sv ^{SL} p53+/+ORp53+/- embryo (17.5 embryo)	28	pup 161 (5/2/10)
C57Bl6/129Sv ^{SL} p53+/+ORp53+/- embryo (17.5 embryo)	29	pup 162 (5/2/10)
C57Bl6/129Sv ^{SL} p53+/+ORp53+/- embryo (17.5 embryo)	30	pup 163 (5/2/10)
C57Bl6/129Sv ^{SL} p53+/+ORp53+/- embryo (17.5 embryo)	31	pup 164 (5/2/10)
C57Bl6/129Sv ^{SL} p53+/+ORp53+/- embryo (17.5 embryo)	32	pup 165 (5/2/10)
C57Bl6/129Sv ^{SL} p53+/+ORp53+/- embryo (17.5 embryo)	33	pup 166 (5/2/10)

C57Bl6 p53+/- Male 9 months (liver)	34	12482 (11/8/10)
129Sv ^{SL} p53+/+ Female 3 months (liver)	35	13907 (11/8/10)
C57Bl6/129Sv ^{SL} p53+/+ORp53+/- embryo (17.5 embryo)	36	13907-E1 (11/8/10)
C57Bl6/129Sv ^{SL} p53+/+ORp53+/- embryo (17.5 embryo)	37	13907-E2 (11/8/10)

C57Bl6/129Sv ^{SL} p53+/+ORp53+/- embryo (17.5 embryo)	38	13907-E3 (11/8/10)
C57Bl6/129Sv ^{SL} p53+/+ORp53+/- embryo (17.5 embryo)	39	13907-E4 (11/8/10)
C57Bl6/129Sv ^{SL} p53+/+ORp53+/- embryo (17.5 embryo)	40	13907-E5 (11/8/10)
C57Bl6/129Sv ^{SL} p53+/+ORp53+/- embryo (17.5 embryo)	41	13907-E6 (11/8/10)
C57Bl6/129Sv ^{SL} p53+/+ORp53+/- embryo (17.5 embryo)	42	13907-E7 (11/8/10)

C57Bl6 p53+/- Male 12 months (liver)	43	10607 (11/9/10)
129Sv ^{SL} p53+/+ Female 3 months (liver)	44	13980 (10/18/10)
C57Bl6/129Sv ^{SL} p53+/+ORp53+/- embryo (17.5 embryo)	45	13908-E1 (10/18/10)
C57Bl6/129Sv ^{SL} p53+/+ORp53+/- embryo (17.5 embryo)	46	13908-E2 (10/18/10)
C57Bl6/129Sv ^{SL} p53+/+ORp53+/- embryo (17.5 embryo)	47	13908-E3 (10/18/10)
C57Bl6/129Sv ^{SL} p53+/+ORp53+/- embryo (17.5 embryo)	48	13908-E4 (10/18/10)
C57Bl6/129Sv ^{SL} p53+/+ORp53+/- embryo (17.5 embryo)	49	13908-E5 (10/18/10)

C57Bl6 p53-/- Male 3 months (liver)	50	12483 (5/17/10)
129Sv ^{SL} p53+/+ Female 3 months (liver)	51	12775 (5/17/10)
C57Bl6/129Sv ^{SL} p53+/- embryo (17.5 embryo)	52	pup 205 (5/17/10)
C57Bl6/129Sv ^{SL} p53+/- embryo (17.5 embryo)	53	pup 206 (5/17/10)
C57Bl6/129Sv ^{SL} p53+/- embryo (17.5 embryo)	54	pup 207 (5/17/10)
C57Bl6/129Sv ^{SL} p53+/- embryo (17.5 embryo)	55	pup 208 (5/17/10)
C57Bl6/129Sv ^{SL} p53+/- embryo (17.5 embryo)	56	pup 209 (5/17/10)
C57Bl6/129Sv ^{SL} p53+/- embryo (17.5 embryo)	57	pup 210 (5/17/10)

Batch 3

	Sample#	ID#/DOD
129Sv ^{SL} p53-/- Female 3 months (liver)	1	12429 (5/2/10)
C57Bl6 p53+/+ Male 3 months (liver)	2	12389 (5/3/10)
C57Bl6/129Sv ^{SL} p53+/- embryo (17.5 embryo)	3	pup156 (5/2/10)
C57Bl6/129Sv ^{SL} p53+/- embryo (17.5 embryo)	4	pup157 (5/2/10)
C57Bl6/129Sv ^{SL} p53+/- embryo (17.5 embryo)	5	pup158 (5/2/10)
C57Bl6/129Sv ^{SL} p53+/- embryo (17.5 embryo)	6	pup159 (5/2/10)
C57Bl6/129Sv ^{SL} p53+/- embryo (17.5 embryo)	7	pup160 (5/2/10)

129Sv ^{SL} p53-/- Female 3 months (liver)	8	12430 (5/3/10)
C57Bl6 p53+/+ Male 3 months (liver)	9	12390 (5/3/10)
C57Bl6/129Sv ^{SL} p53+/- embryo (17.5 embryo)	10	pup176 (5/3/10)
C57Bl6/129Sv ^{SL} p53+/- embryo (17.5 embryo)	11	pup177 (5/3/10)
C57Bl6/129Sv ^{SL} p53+/- embryo (17.5 embryo)	12	pup178 (5/3/10)

129Sv ^{SL} p53-/- Male 3 months (liver)	13	12420 (4/30/10)
C57Bl6 p53+/+ Female 3 months (liver)	14	12406 (4/30/10)
C57Bl6/129Sv ^{SL} p53+/- embryo (17.5 embryo)	15	pup138 (4/30/10)
C57Bl6/129Sv ^{SL} p53+/- embryo (17.5 embryo)	16	pup139 (4/30/10)
C57Bl6/129Sv ^{SL} p53+/- embryo (17.5 embryo)	17	pup140 (4/30/10)
C57Bl6/129Sv ^{SL} p53+/- embryo (17.5 embryo)	18	pup141 (4/30/10)
C57Bl6/129Sv ^{SL} p53+/- embryo (17.5 embryo)	19	pup142 (4/30/10)
C57Bl6/129Sv ^{SL} p53+/- embryo (17.5 embryo)	20	pup143 (4/30/10)
C57Bl6/129Sv ^{SL} p53+/- embryo (17.5 embryo)	21	pup144 (4/30/10)

129Sv ^{SL} p53-/- Male 3 months (liver)	22	12419 (4/30/10)
C57Bl6 p53+/+ Female 3 months (liver)	23	12407 (4/30/10)
C57Bl6/129Sv ^{SL} p53+/- embryo (17.5 embryo)	24	pup128 (4/30/10)
C57Bl6/129Sv ^{SL} p53+/- embryo (17.5 embryo)	25	pup129 (4/30/10)
C57Bl6/129Sv ^{SL} p53+/- embryo (17.5 embryo)	26	pup130 (4/30/10)
C57Bl6/129Sv ^{SL} p53+/- embryo (17.5 embryo)	27	pup131 (4/30/10)
C57Bl6/129Sv ^{SL} p53+/- embryo (17.5 embryo)	28	pup132 (4/30/10)
C57Bl6/129Sv ^{SL} p53+/- embryo (17.5 embryo)	29	pup133 (4/30/10)
C57Bl6/129Sv ^{SL} p53+/- embryo (17.5 embryo)	30	pup134 (4/30/10)
C57Bl6/129Sv ^{SL} p53+/- embryo (17.5 embryo)	31	pup135 (4/30/10)
C57Bl6/129Sv ^{SL} p53+/- embryo (17.5 embryo)	32	pup136 (4/30/10)
C57Bl6/129Sv ^{SL} p53+/- embryo (17.5 embryo)	33	pup137 (4/30/10)

129Sv ^{SL} p53-/- Male 3 months (liver)	34	12417 (4/30/10)
C57Bl6 p53+/+ Female 3 months (liver)	35	12405 (4/30/10)
C57Bl6/129Sv ^{SL} p53+/- embryo (17.5 embryo)	36	pup145 (4/30/10)
C57Bl6/129Sv ^{SL} p53+/- embryo (17.5 embryo)	37	pup146 (4/30/10)

C57Bl6/129Sv ^{SL} p53+/- embryo (17.5 embryo)	38	pup147 (4/30/10)
C57Bl6/129Sv ^{SL} p53+/- embryo (17.5 embryo)	39	pup148 (4/30/10)
C57Bl6/129Sv ^{SL} p53+/- embryo (17.5 embryo)	40	pup149 (4/30/10)
C57Bl6/129Sv ^{SL} p53+/- embryo (17.5 embryo)	41	pup150 (4/30/10)
C57Bl6/129Sv ^{SL} p53+/- embryo (17.5 embryo)	42	pup151 (4/30/10)

C57Bl6 p53-/- Male 3 months (liver)	43	12480 (5/17/10)
129Sv ^{SL} p53+/+ Female 3 months (liver)	44	12774 (5/17/10)
C57Bl6/129Sv ^{SL} p53+/- embryo (17.5 embryo)	45	pup197 (5/17/10)
C57Bl6/129Sv ^{SL} p53+/- embryo (17.5 embryo)	46	pup198 (5/17/10)
C57Bl6/129Sv ^{SL} p53+/- embryo (17.5 embryo)	47	pup199 (5/17/10)
C57Bl6/129Sv ^{SL} p53+/- embryo (17.5 embryo)	48	pup200 (5/17/10)
C57Bl6/129Sv ^{SL} p53+/- embryo (17.5 embryo)	49	pup201 (5/17/10)
C57Bl6/129Sv ^{SL} p53+/- embryo (17.5 embryo)	50	pup202 (5/17/10)
C57Bl6/129Sv ^{SL} p53+/- embryo (17.5 embryo)	51	pup203 (5/17/10)
C57Bl6/129Sv ^{SL} p53+/- embryo (17.5 embryo)	52	pup204 (5/17/10)

C57Bl6 p53-/- Male 3 months (liver)	53	12484 (5/16/10)
129Sv ^{SL} p53+/+ Female 3 months (liver)	54	12776 (5/16/10)
C57Bl6/129Sv ^{SL} p53+/- embryo (17.5 embryo)	55	pup191 (5/16/10)
C57Bl6/129Sv ^{SL} p53+/- embryo (17.5 embryo)	56	pup192 (5/16/10)
C57Bl6/129Sv ^{SL} p53+/- embryo (17.5 embryo)	57	pup193 (5/16/10)
C57Bl6/129Sv ^{SL} p53+/- embryo (17.5 embryo)	58	pup194 (5/16/10)
C57Bl6/129Sv ^{SL} p53+/- embryo (17.5 embryo)	59	pup195 (5/16/10)
C57Bl6/129Sv ^{SL} p53+/- embryo (17.5 embryo)	60	pup196 (5/16/10)

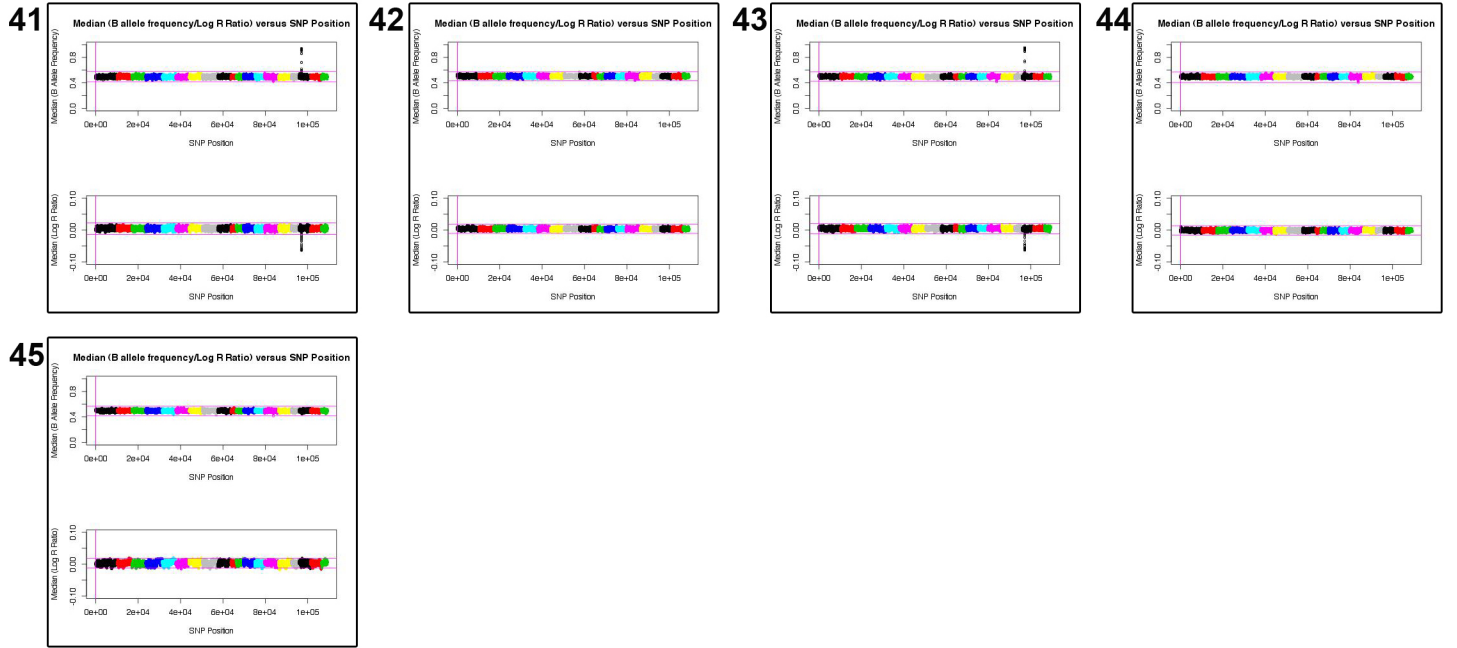
Batch1



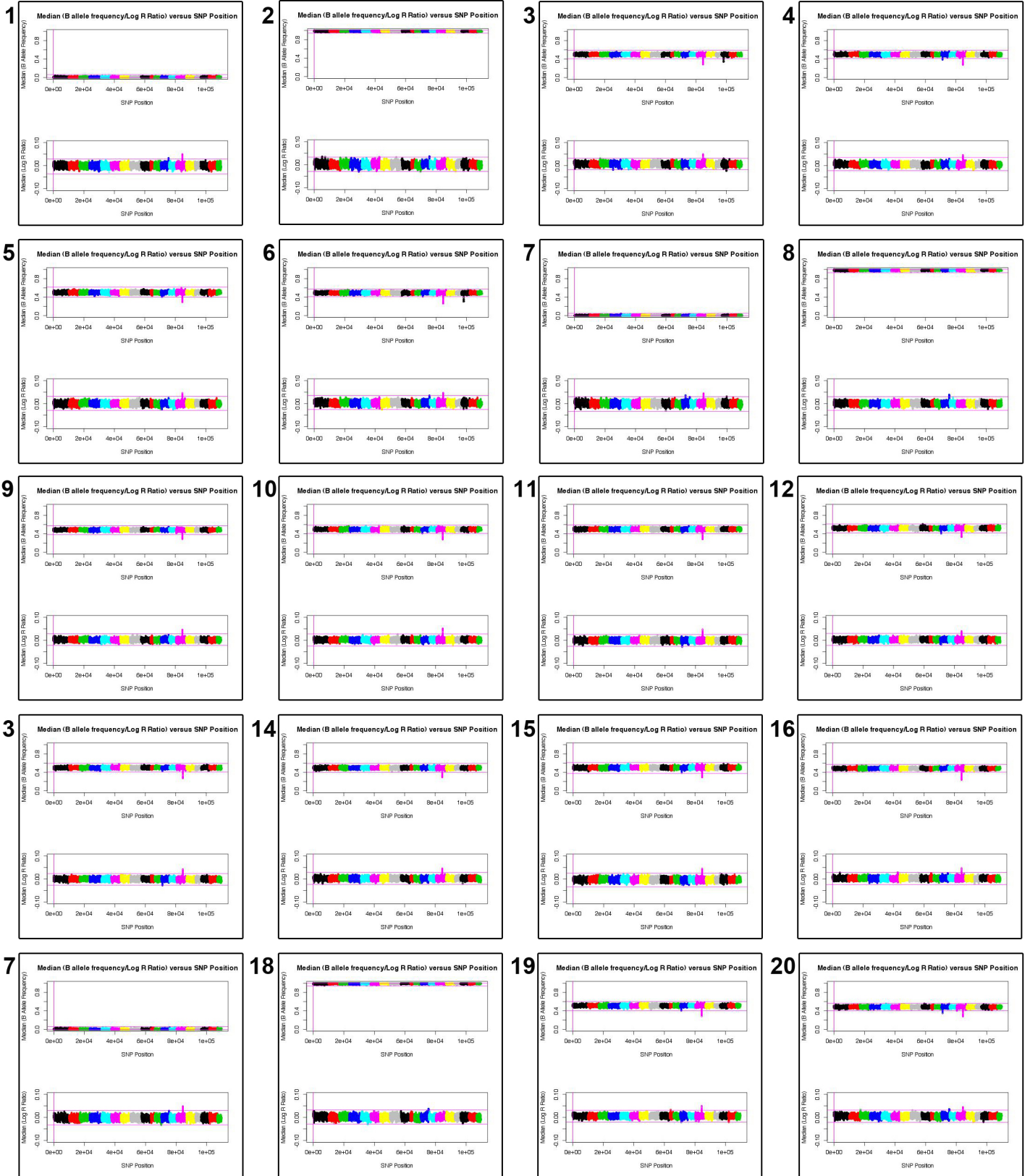
Batch1



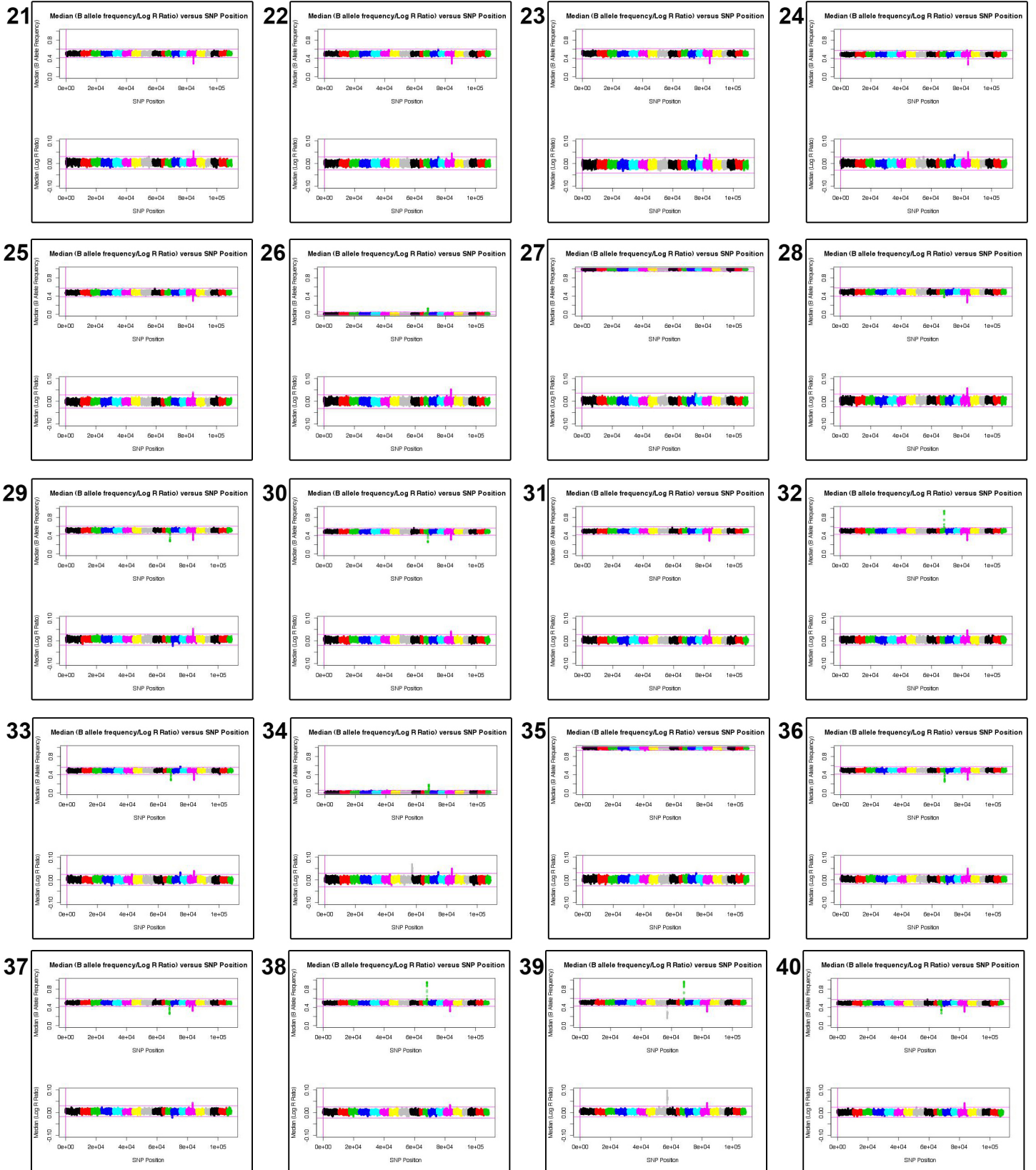
Batch 1



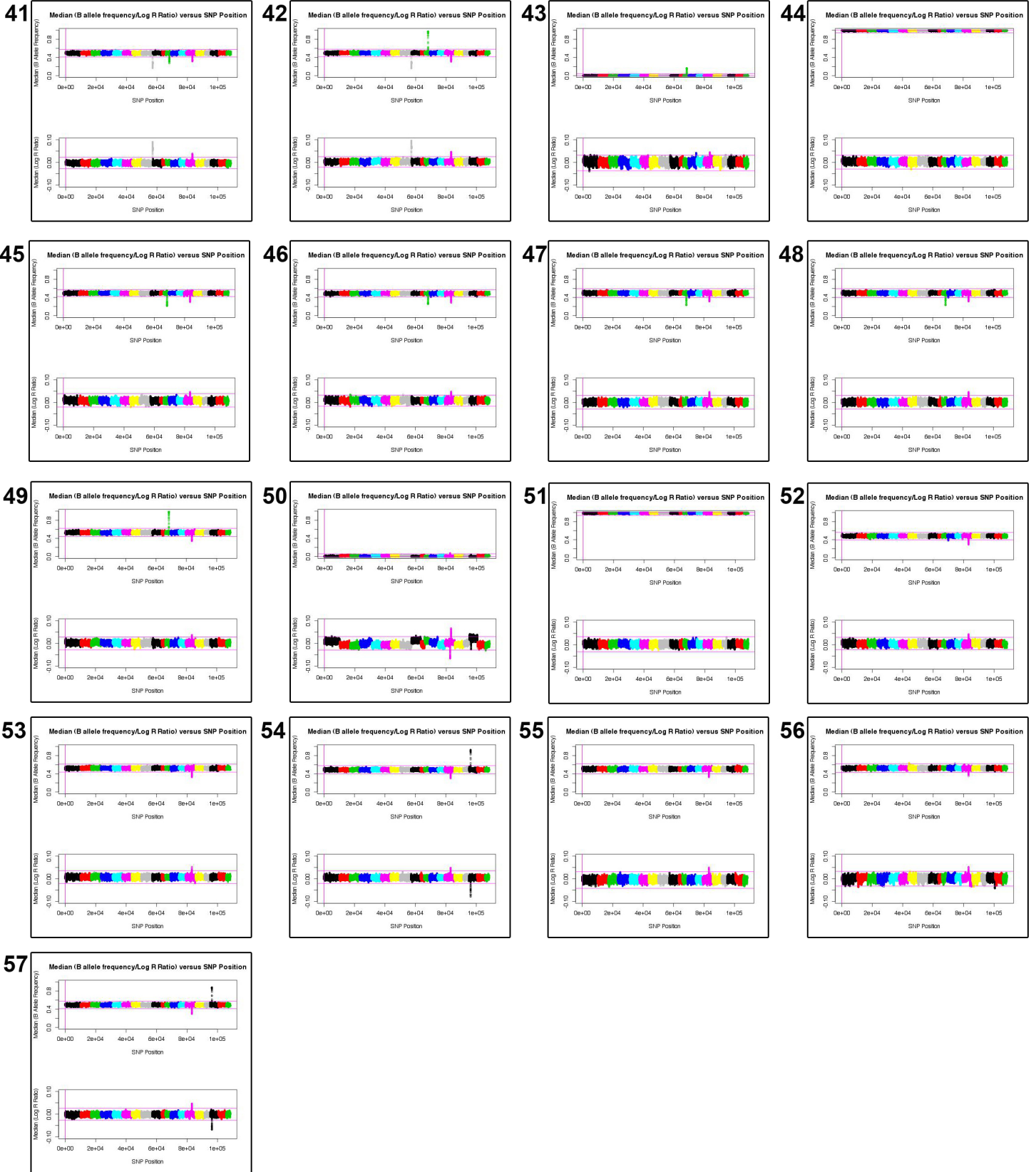
Batch 2



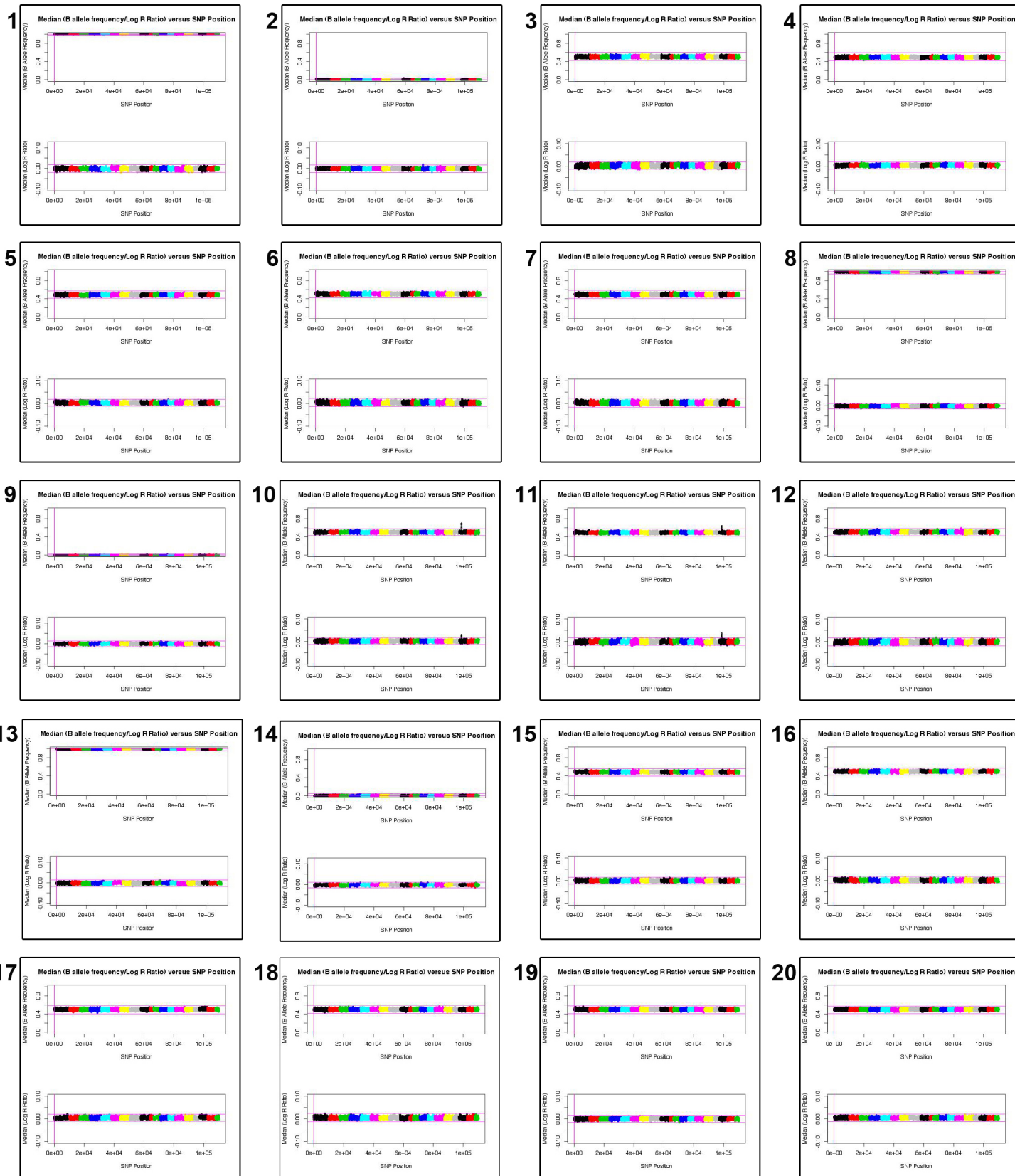
Batch 2



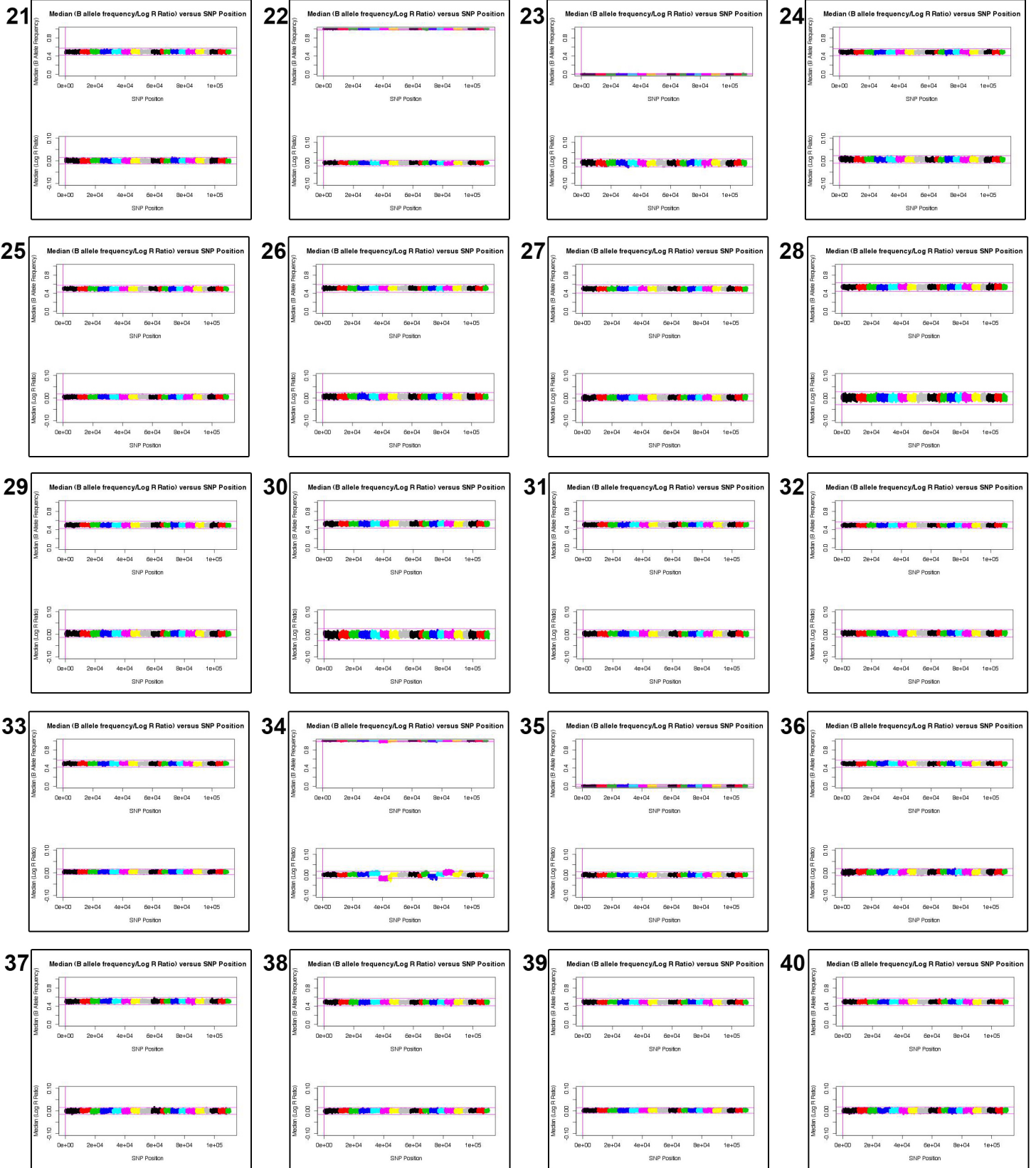
Batch 2



Batch 3



Batch 3



Batch 3

