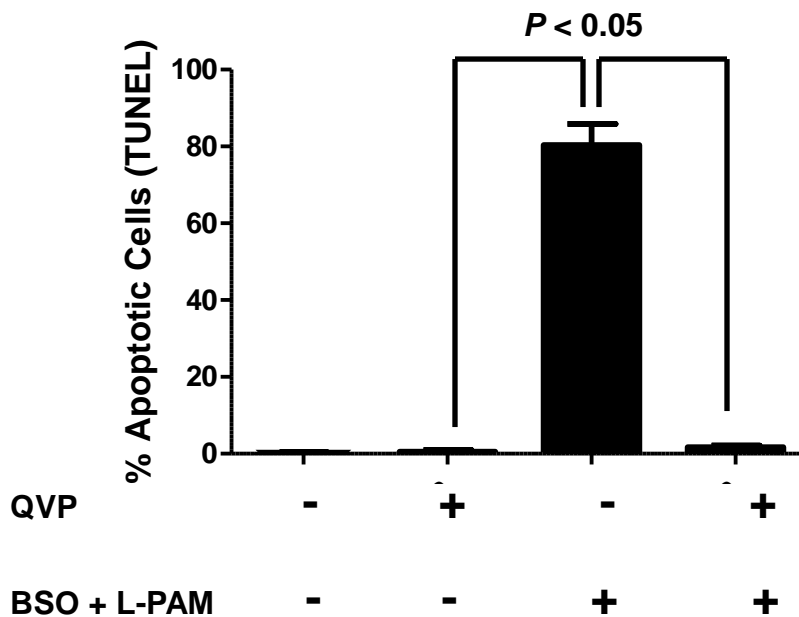
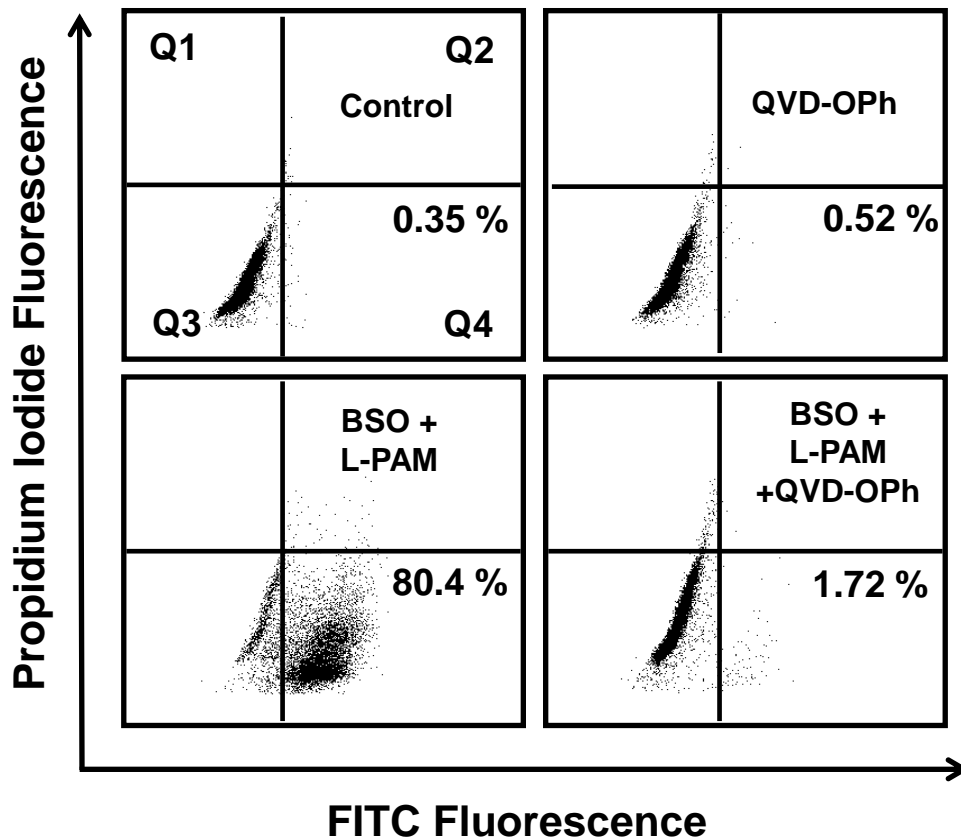


Supplementary Figure 5



Supplementary Figure 5: Caspase inhibition reversed BSO + L-PAM induced apoptosis in KMS-12-PE cell line. Apoptosis was determined using TUNEL assay. Cells in Quadrant 4 (Q4; FITC+/PI-) were considered as apoptotic cells. Inhibition of caspase by QVD-OPh (5 μ M) significantly reversed ($P < 0.05$) the BSO + L-PAM induced apoptosis. The bars represent mean fraction of apoptotic cells \pm SD ($n \geq 3$) as determined by TUNEL assay.