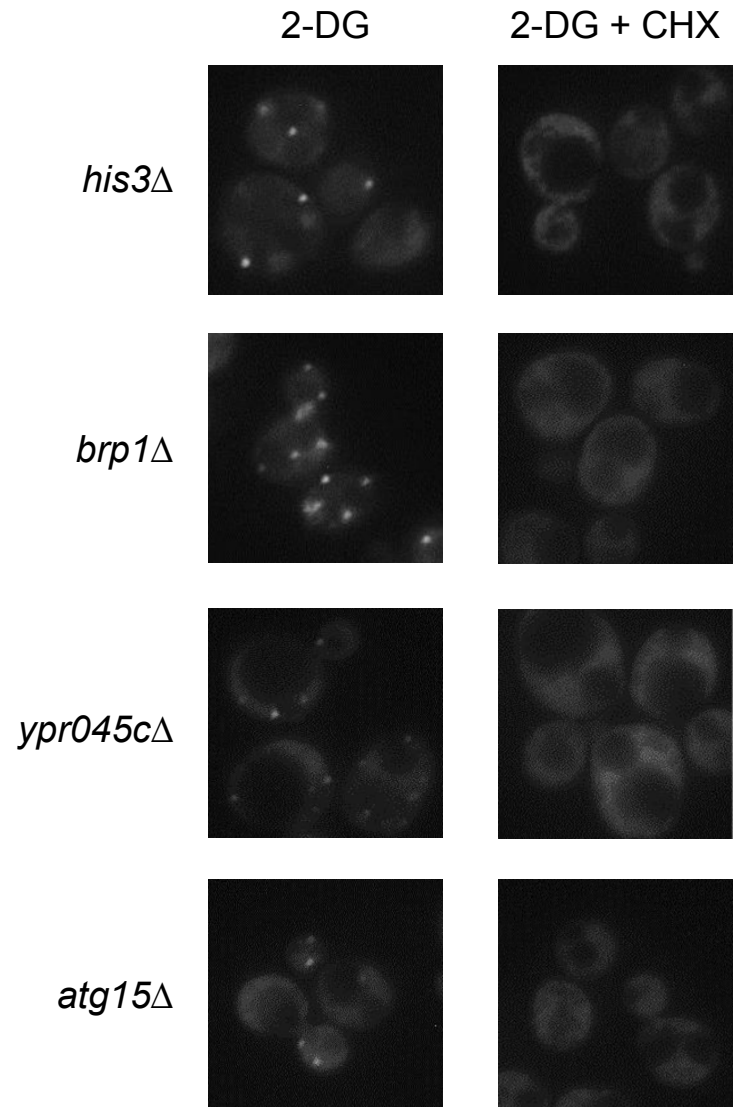
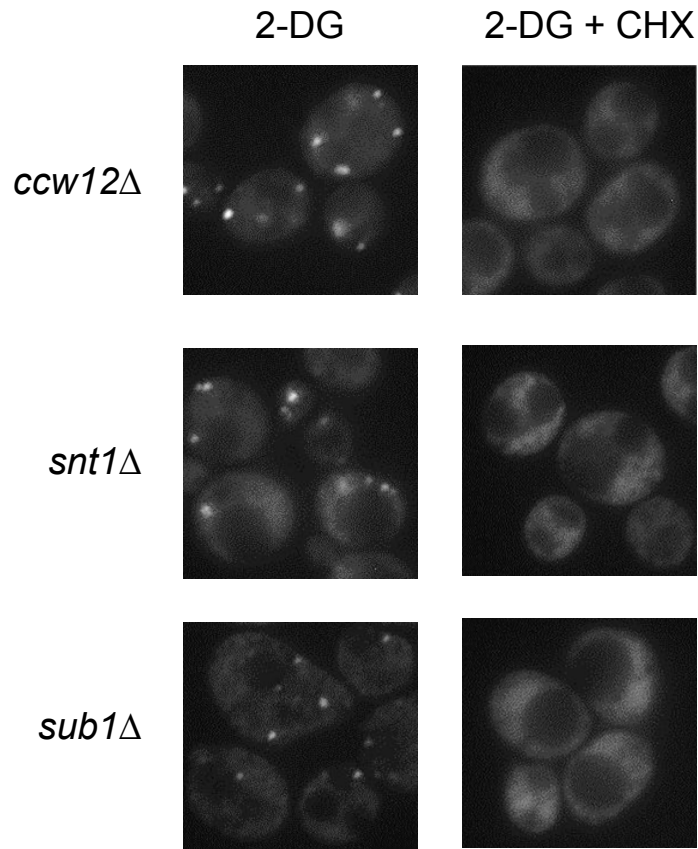


**Supplementary  
Figure S6**

Mutant	% cells with SGs	
	2DG	2DG+CHX
<i>his3</i>	23	2
<i>brp1</i>	71	2
<i>ypr045c</i>	63	0
<i>atg15</i>	43	3
<i>ccw12</i>	76	0
<i>snt1</i>	64	1
<i>sub1</i>	65	0



**Cycloheximide inhibits SG induction in mutants with supernumerary SGs**

Mutants with increased SG numbers in 2-DG (90 min) with or without pretreatment with cycloheximide