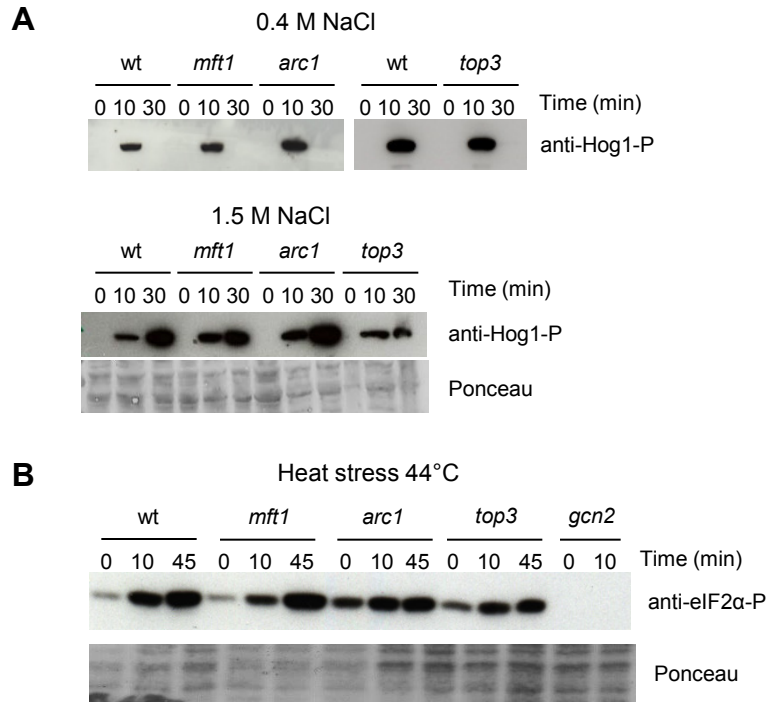


## Supplementary Figure S8



*HOG* and *TOR* signaling activity after stress, measured as *Hog1* and *eIF2α* phosphorylation, respectively, in wt and SG-defective mutants

Wt, *mft1Δ*, *arc1Δ*, and *top3Δ* were analyzed. Cells were exposed to hyperosmotic stress (0.4 M or 1.5 M NaCl) or heat stress (44°C) as indicated, and samples were recovered at times indicated in each panel. Protein extracts were obtained in the presence of phosphatase inhibitors and were analyzed by western blot using specific antibodies (see Materials and Methods).

**A)** Phosphorylation of *Hog1* during hyperosmotic stress in wt and SG-defective mutants

**B)** Phosphorylation of *eIF2α* (*Sui2*) during heat stress in SG-defective mutants. The *gcn2Δ* mutant was included as a negative control (*Gcn2* is the *eIF2α* kinase).