

Supplementary Table 1. Primers used in real-time quantitative PCR

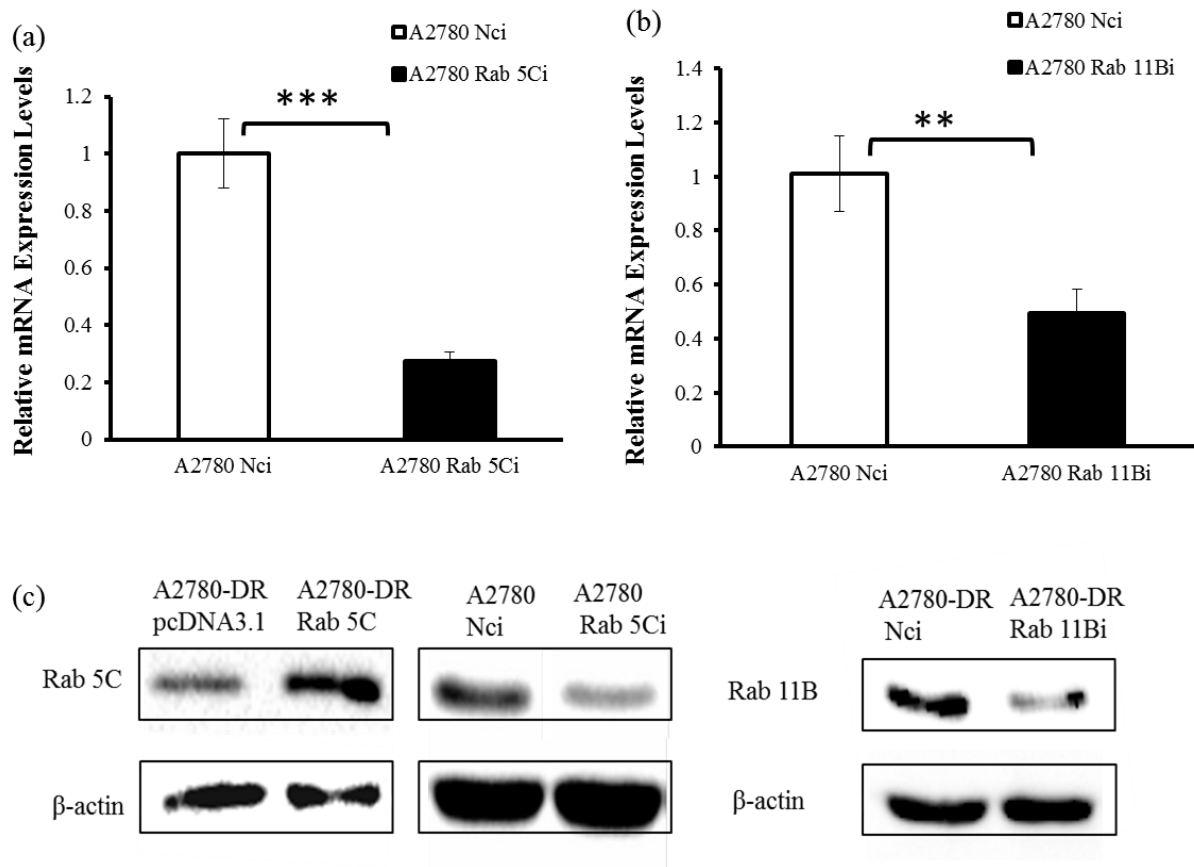
RAB 5C F	GGCTGTGATACCGCTCCTGT
RAB 5C R	GCCTCGTCCTCCGCTTTGTC
Rab 11B F	CCAAGCACCTGACCTATGAGA
Rab 11B R	CTGTGACACGATGCGGTAGA
RanBP2 F	TCTAGAATCTTTACACCTCCTGT
RanBP2 R	GCAGTTTCTGAGGTAGTAGAGAC
PKM2 F	ATCACGCTGGATAACGCCTAC
PKM2 R	GCGGATGAATGACGCAAAC
Vimentin F	GAACCTGAGGGAAACTAATC
Vimentin R	GAAAGGCACTTGAAAGCT

Supplementary Table 2. Sequences of shRNAs and Primers for overexpression of Rab 5C

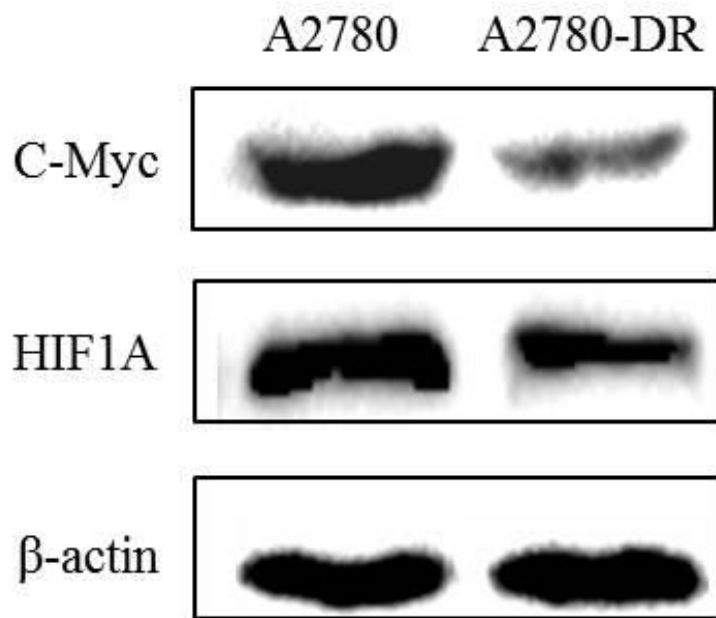
Rab 5Ci	Sense	TGCAAGAGAGCCGTGGAATTTTCAAGAGAAATTCCACGGCTCTCT TGCTTTTTTC
	Antisense	TCGAGAAAAAAGCAAGAGAGCCGTGGAATTTCTCTTGAAAATTCC ACGGCTCTCTTGCA
Rab 11Bi	Sense	TGCAACATCGTCATCATGCTTTCAAGAGAAGCATGATGACGATGT TGCTTTTTTC
	Antisense	TCGAGAAAAAAGCAACATCGTCATCATGCTTCTCTTGAAAGCATG ATGACGATGTTGCA
Rab 5C	Sense	CGCGGATCCGCGATGGGGACCCGGGACGACGAGTA
	Antisense	CCGCTCGAGCGGTCACAGGTTCTGGCAGCACTGCA

Supplementary Table 3. Analysis of Western Blots Displayed in Figure 5.

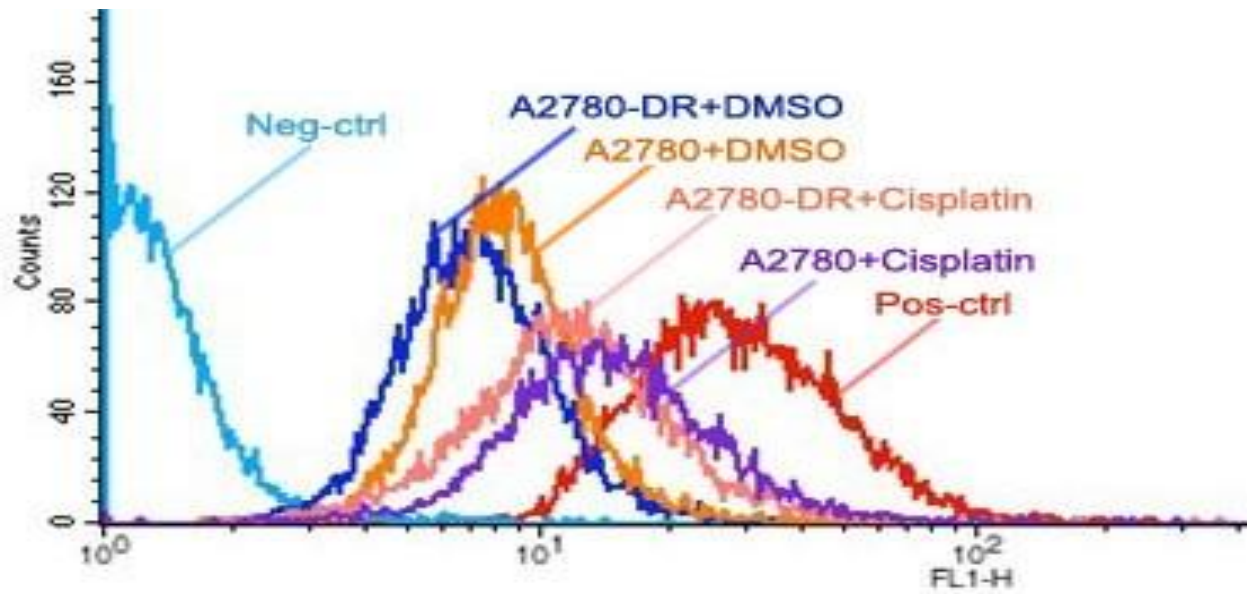
	<i>A2780/A2780-DR</i>
Rab 5C	4.20
Rab 11B	3.87
PKM2	5.75
Vimentin	7.69
β -actin <input type="checkbox"/>	1.16



Supplementary Figure 1. (a) qPCR analysis of Rab 5C from A2780 and ShRNA-transfected cells; (b) qPCR analysis of Rab 11B from A2780 and ShRNA-transfected cells. (c) Western blot analysis of Rab 5C overexpression in A2780-DR cells; Rab 5C knockdown in A2780; and Rab 11B knockdown in A2780 cells. ** $p < 0.01$ and *** $p < 0.001$.



Supplementary Figure 2. Western blot analysis of c-Myc and HIF1A in A2780 and A2780-DR cells.



Supplementary Figure 3. Detection of ROS in untreated and cisplatin-treated A2780 and A2780-DR cells using the Image-iT LIVE Reactive Oxygen Species (ROS) Kit. Cells were labeled with carboxy-H₂DCFDA and detected by flow cytometry.