

Supplementary Materials for

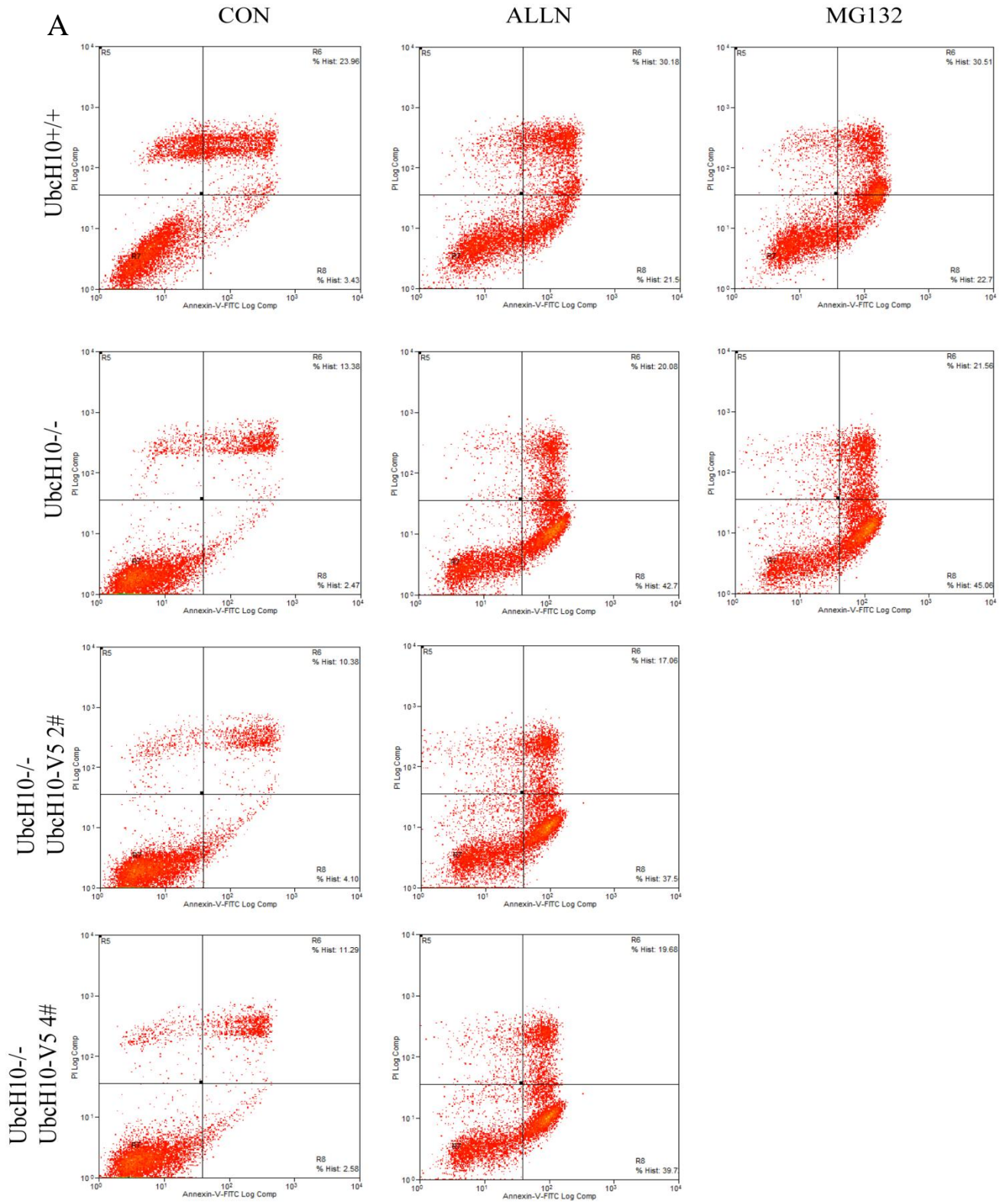
UbcH10 overexpression increases carcinogenesis and blocks ALLN susceptibility in colorectal cancer

Shang-Ze Li^{1,3}, Yang Song^{1,3}, Hui-Hui Zhang¹, Bing-Xue Jin¹, Yi Liu¹, Wen-Bin Liu², Xiao-Dong Zhang^{1,*}, Run-Lei Du^{1,*}

This PDF file includes:

Fig. S1

Figure S1



B

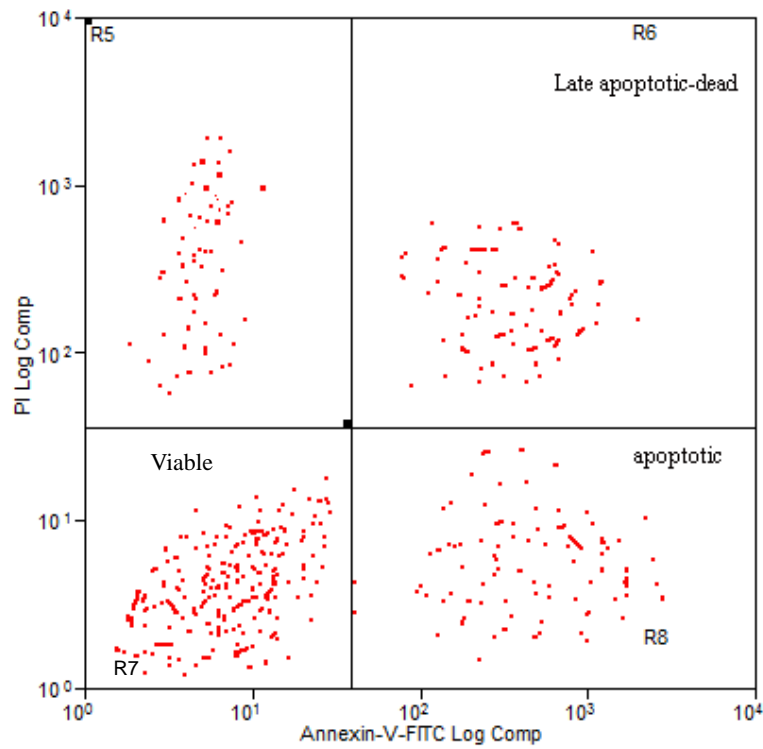


Figure S1. A. Annexin-V/PI staining followed by flow cytometry. Approximately 1×10^5 of the indicated cells were seeded in 12 well plates. DLD1, DLD1-UbcH10^{-/-} cells and DLD1-UbcH10^{-/-}-UbcH10-V5 were exposed to ALLN(26 μ M) or MG132(3.3 μ M) for 24 hours. Total cells were then collected and stained with Annexin-V/PI for 15 min, and apoptosis was analyzed via flow cytometry. B. An example of annexin-V/PI plot. R6, R7, R8 panel indicates late apoptotic cells, the viable cells, and the apoptotic cells, respectively. The apoptotic ratios were calculated by adding up R6 and R8.