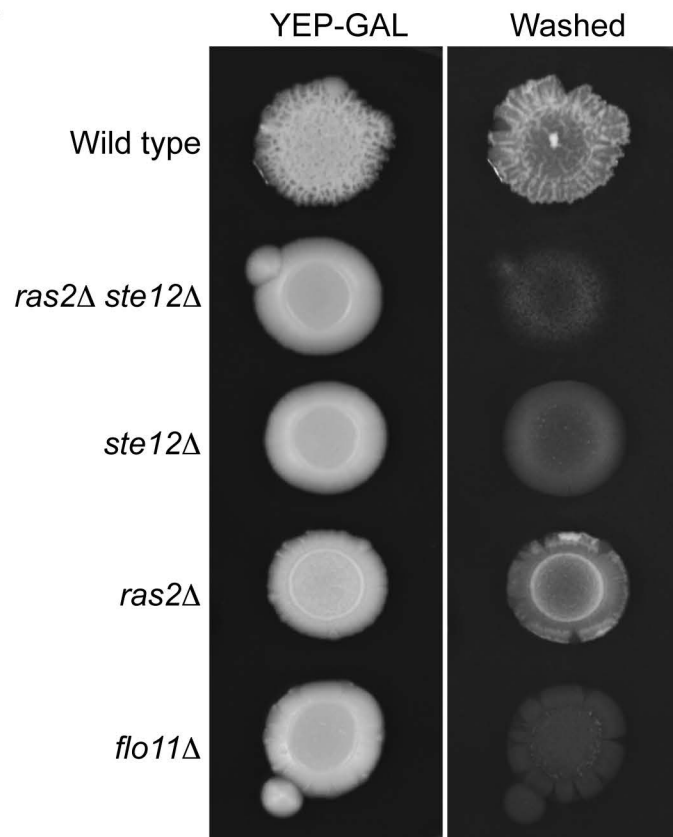
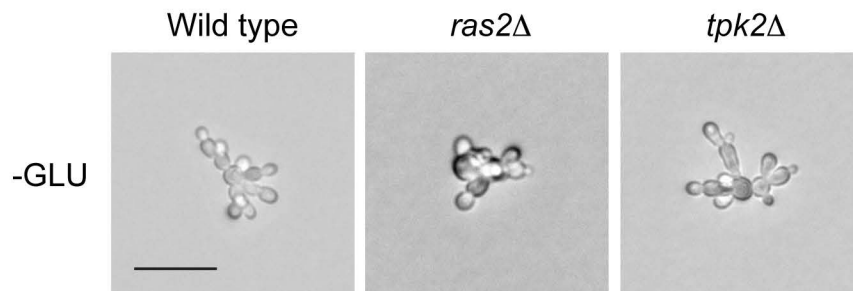


**A****B**

**Figure S4. Role of Ras2p and Tpk2p in conditional regulation of the filamentous growth MAPK pathway. A)**

The plate washing assay on YEP-GAL medium of wild-type cells, and the *ste12Δ*, *ras2Δ*, and *ste12Δ ras2Δ* double mutants.

**B)** Single cell assay of the *ras2Δ* and *tpk2Δ* mutant. Bar, 20 microns.