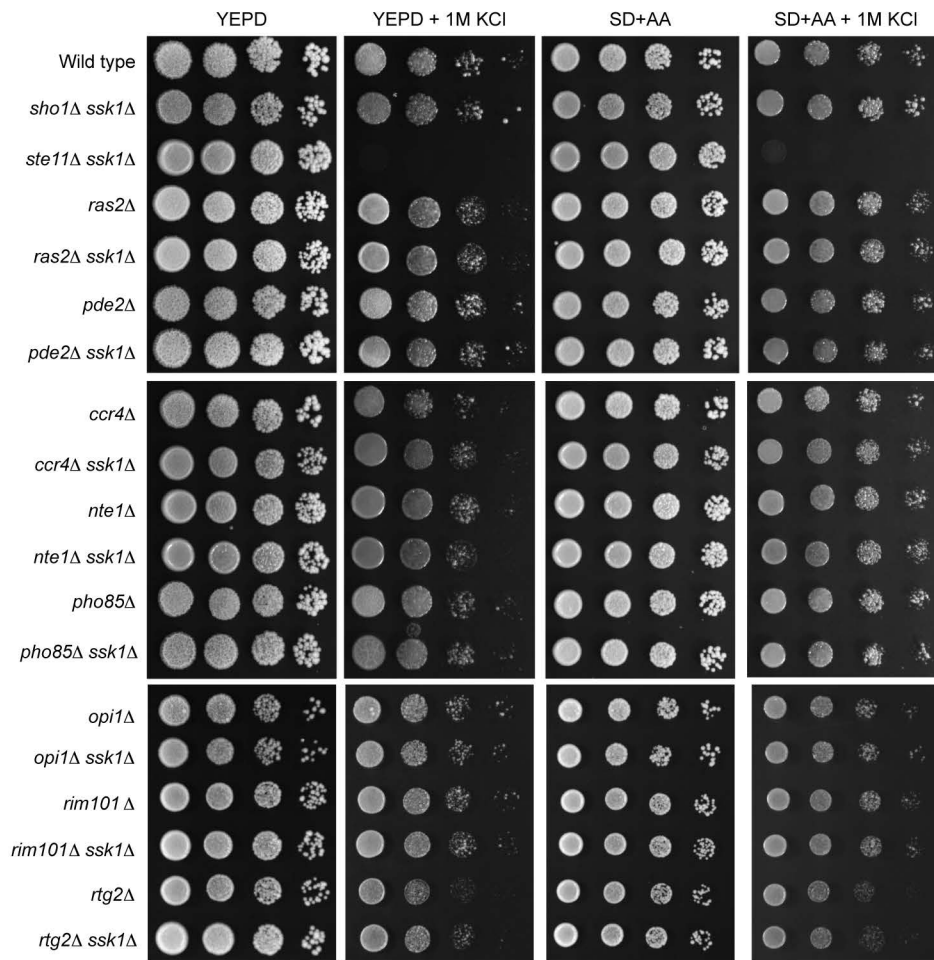
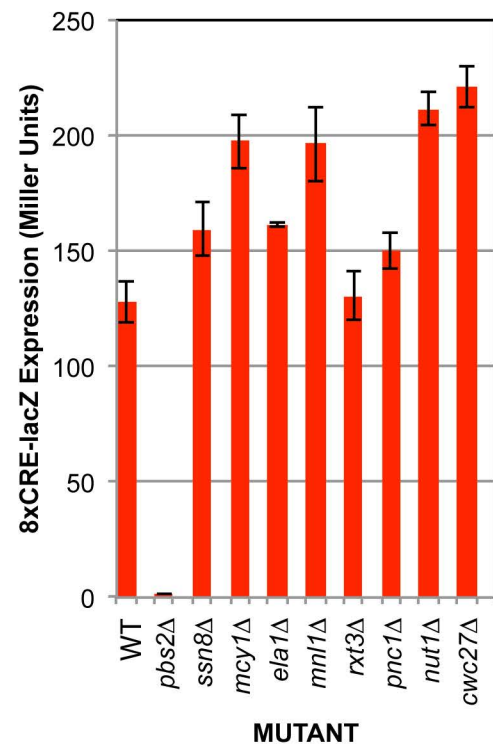


**A****B**

**Figure S6. Specificity of filamentous growth MAPK pathway regulators in the HOG pathway.** A) Wild type and indicated mutants were spotted on YEPD, YEPD + 1M KCl, SD + AA, and SD + AA + 1M KCl and grown for 2d. B)

Level of  $p8X$ -CRE-lacZ activity in selected mutants that show filamentous growth MAPK pathway hyper-activation.

Strains were grown in YEPD for 6 h then shifted to YEPD + .4M KCl for 30 min.