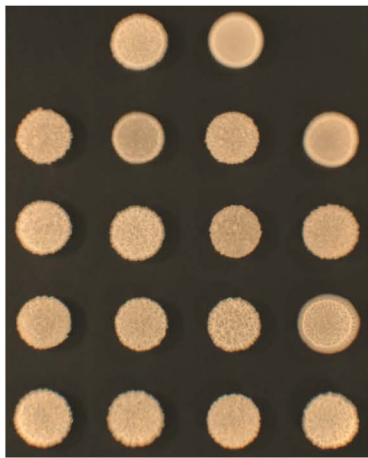


**A**

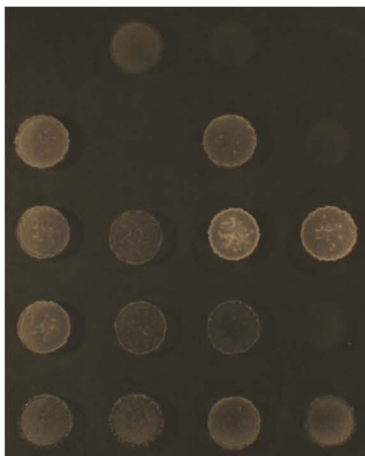
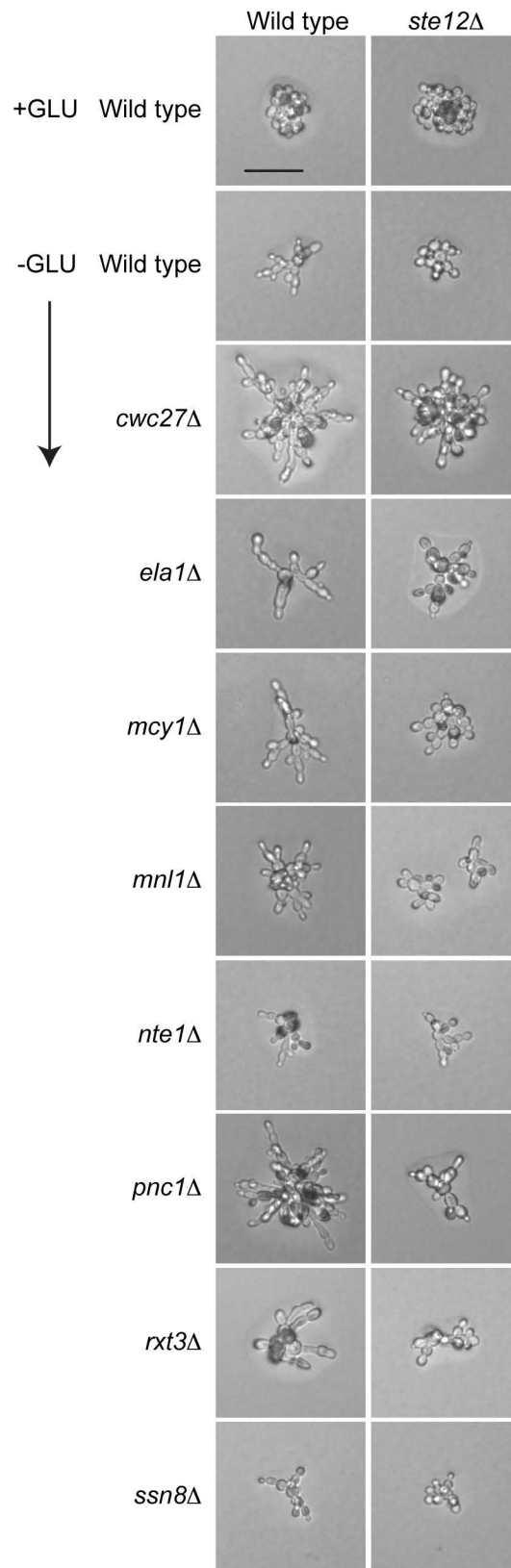
## Plate Guide

	WT	<i>ste12Δ</i>	
<i>mcy1Δ</i>	<i>mcy1Δ</i> <i>ste12Δ</i>	<i>pnc1Δ</i>	<i>pnc1Δ</i> <i>ste12Δ</i>
<i>mnl1Δ</i>	<i>mnl1Δ</i> <i>ste12Δ</i>	<i>rxt3Δ</i>	<i>rxt3Δ</i> <i>ste12Δ</i>
<i>cwc27Δ</i>	<i>cwc27Δ</i> <i>ste12Δ</i>	<i>ssn8Δ</i>	<i>ssn8Δ</i> <i>ste12Δ</i>
<i>nut1Δ</i>	<i>nut1Δ</i> <i>ste12Δ</i>	<i>ela1Δ</i>	<i>ela1Δ</i> <i>ste12Δ</i>

## YEPD



## Wash

**B**

**Fig. S3. Suppression of hyper-invasive growth phenotypes of mutants identified in the screen by deletion of *STE12*.** **A)** Wild-type and *ste12Δ* mutant combinations as indicated were examined by the plate-washing assay, or in **B)** by the single cell assay. Bar, 30 microns. The *mcy1* mutant may contain a second mutation based on retesting.