

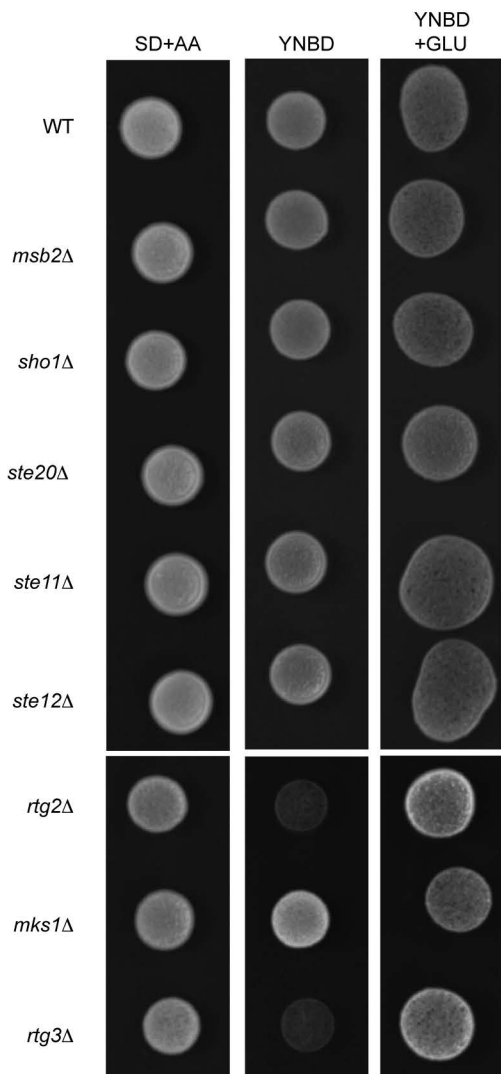
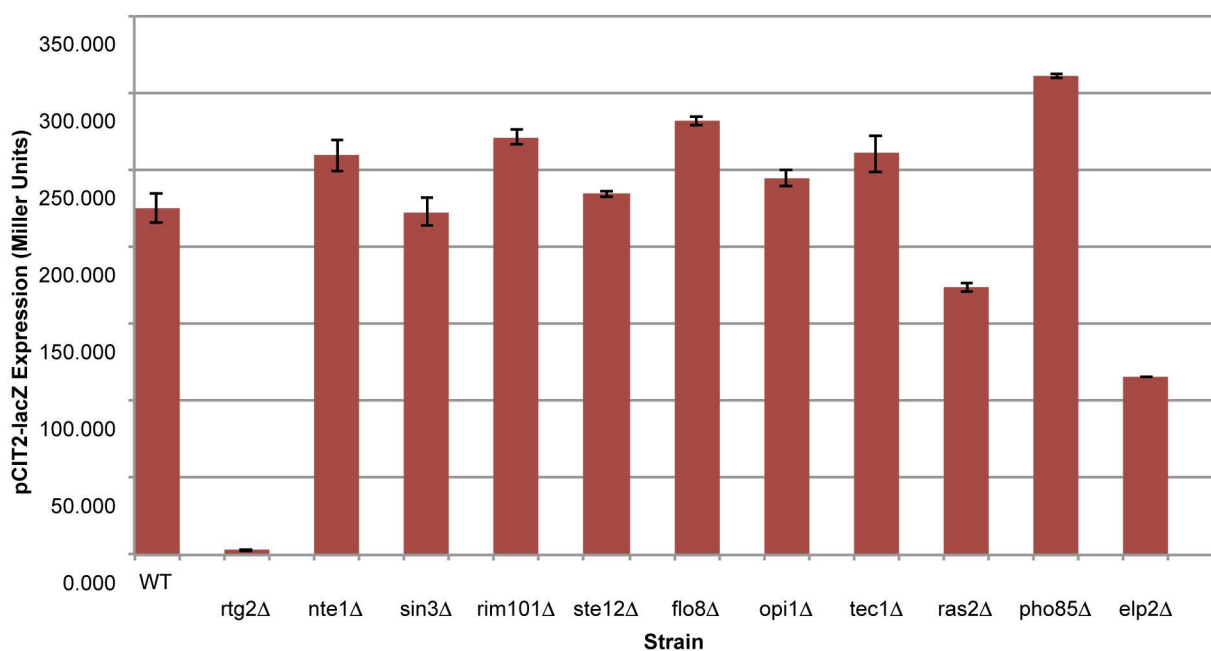
A**B**

Figure S7. The filamentous growth MAPK pathway does not regulate the RTG response. A) Strains were spotted onto plates containing 6.7% Yeast Nitrogen Base without amino acids and supplemented with uracil with or without glutamate. Glutamate auxotrophy reflects a defective RTG pathway. B) *CIT2-lacZ* analysis of selected mutants. β -galactosidase assays were performed in duplicate; error bars represent standard deviation between samples.