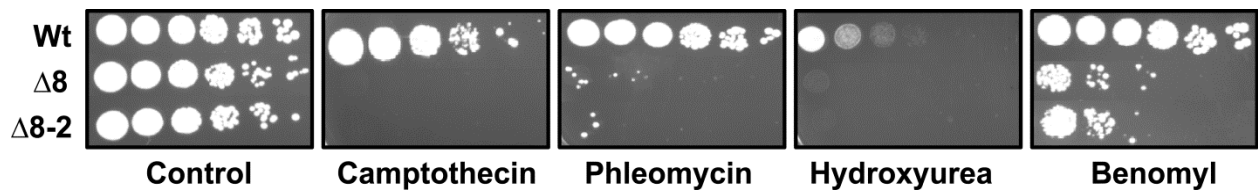


**Figure S8**



**Figure S8. Sensitivity of  $\Delta 8$  and Wt cells to DNA damage agents.** Ten-fold dilution of Wt and  $\Delta 8$  cells grown on YPD plates containing 15  $\mu\text{g/ml}$  camptothecin (replication inhibitor), 150 mM hydroxyurea (replication inhibitor), 0.3  $\mu\text{g/ml}$  phleomycine (double strand break inducer) or 15  $\mu\text{g/ml}$  benomyl (microtubule poison).