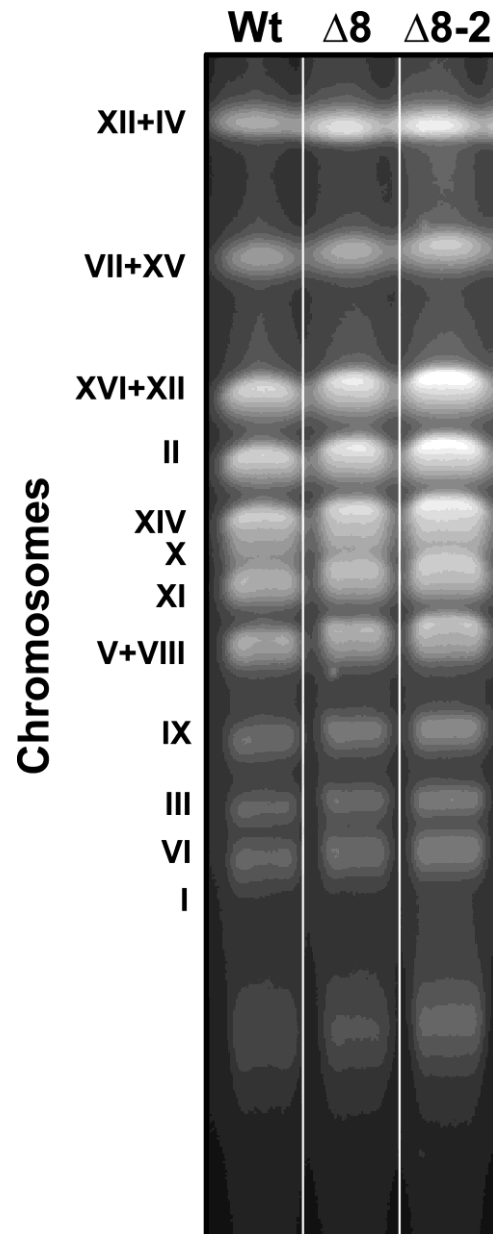


Figure S4



**Figure S4. Pulse-field gel analysis showing chromosome size comparison between Wt and Δ8 isolates.** PFGE was conducted using a BioRad Contour-clamped homogeneous electric field (CHEF) Mapper XA system and genomic samples were prepared using the CHEF genomic DNA plug kit. Agarose-embedded chromosomal DNA preparation and running conditions were performed according to the kit manual.