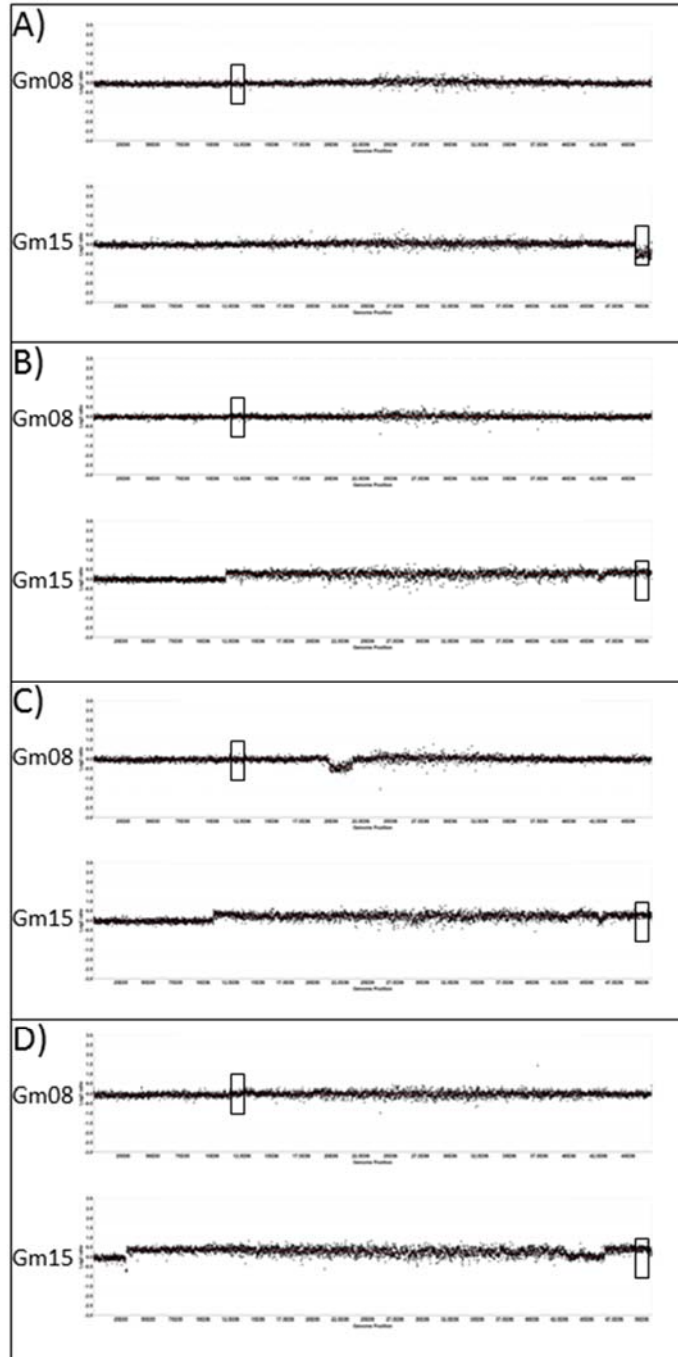


Figure S5



**Figure S5** aCGH mapping of fast neutron-induced deletions and duplications on chromosomes 8 and 15 for plants identified by the Reverse Screen. A) FN0170255, B) FN0170228, C) FN0170522, D) FN0170712. The  $\log_2$  ratio of the mutant versus the control is plotted. Values that plot above zero indicate duplications and values that plot below zero indicate deletions. Each data point represents the average feature ratio across adjacent probes within 11-kb windows. The rectangles indicate the homoeologous regions on Gm08 and Gm15 that were initially Reverse Screened by Sequenom MassARRAY. The rectangles are vertically centered at the  $\log_2$  value of zero to clearly show the downward shift representing a deletion (chromosome 15 in FN0170255) and the upward shifts representing duplications (chromosome 15 in FN0170228, FN0170522, and FN0170712).